

Bankston

Civilian



Hemispheres

by

C I V I L I A N



Ksenia Kagner & Nicko Elliott | Directors, Civilian.

Hemispheres *by* C I V I L I A N

Introducing Hemispheres, Bankston's latest collaboration with Brooklyn-based design studio Civilian, led by Ksenia Kagner and Nicko Elliott. This 10-piece collection marks a departure from conventional architectural hardware featuring bold geometries, striking finishes, and innovative functions, reflecting a shared ambition to elevate the ordinary.

The collection title, Hemispheres, not only references a central dome motif within the range, but also symbolises the collaboration's global nature—Civilian in the Northern Hemisphere and Bankston in the Southern Hemisphere. This title encapsulates the essence of the partnership, emphasising a shared design ethos transcending geographic bounds.

With nods to Art Deco, machine aesthetics, organicism, and industrial prefabrication, Hemispheres emerges as a timeless collection adaptable to any interior style. The range includes uniquely designed knobs, levers, pulls, and door stops, with interchangeable components that allow for a myriad of configurations. These modular pieces revolve around dome-shaped adornments offering a dynamic visual and tactile experience. A Sliding Door Pull and Privacy Turn add versatility, catering to a breadth of architectural hardware needs.

Civilian's signature blend of refined playfulness is evident in the collection, mirroring their approach to both hardware and interior design. The studio's ability to seamlessly integrate materials, colours, and textures is showcased, drawing parallels with their notable projects like New Lab's Detroit location and Sandbox Films.

Co-founders, Nicko Elliott and Ksenia Kagner worked closely with Bankston, leveraging advanced technical capabilities to overcome the challenges of executing a single shape in multiple forms. The collaboration demonstrates a mutual passion for bold design, quality materials, and a spirit of experimentation.

Alongside Bankston's popular Polished Chrome and Smooth Nickel finishes, the collection introduces American Walnut, Portoro Gold, and a warm Bone toned finish, reminiscent of a luxurious semi-gloss enamel. These materials have been intentionally selected, as they enhance the ergonomic characteristics of the dome shape.

Hemispheres celebrates beauty, quality, and reinvented tradition. It enhances environments that hint at the past, alluding to distant places and eras, while remaining distinctly modern.



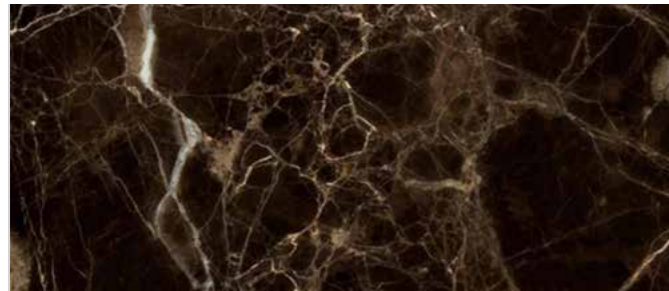
Finishes & Materials

Key elements of the collection can be mixed and matched to create a range of combinations.



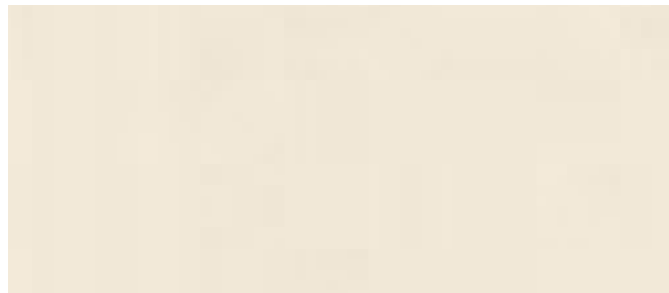
American Walnut

The mid-tone hues of American Walnut impart a gentle warmth to architectural applications. Neither too bright nor overly dark, this solid material strikes a perfect balance, tempering the distinct qualities of the other elements in the collection. As a versatile decorative accent, American Walnut complements other wood features and seamlessly fits into any interior style. Each dome fashioned from American Walnut showcases the natural beauty and unique patterns of the timber. As no two trees are alike, expect subtle differences in grain and tone. While highly durable, these pieces have been designed for interior use.



Portoro Gold

With a rich and intricate grain pattern set against an onyx backdrop, Portoro Gold is a highly coveted stone. Characterised by crystalline geometric forms, this material brings visual and tactile complexity to the Hemispheres collection. In this series, Portoro Gold is reimagined for a modern aesthetic, creating a striking contrast with other materials in the collection. As with all natural materials, expect a beautiful variation in both degree and tone of veining, making each piece truly distinctive.



Bone

With a uniquely rich cream tone, the Bone finish exhibits a dense, subtly clay-like texture, ensuring both durability and a distinctive tactile quality. Crafted from highly durable UV resistant powder-coat, Bone allows precise shaping into geometric contours, mirroring the appearance of a glazed enamel and delivers an unexpectedly cool touch. The tone, thoughtfully chosen, imparts a sense of warmth and timelessness, harmonising effortlessly with various materials, from marble to metals, to create a versatile and cohesive palette.



Polished Chrome

With its incredibly reflective qualities, Polished Chrome creates visual complexity reminiscent of mirrored surfaces. This lustrous finish, perfected through a meticulous plating process on brass, not only fortifies the material but also adds brilliance to its silver-hued surface. Durable and distinct, it infuses depth into interiors, serving as a stark yet cool-to-the-touch accent. Whether used as a dome-shaped adornment or a curvilinear backplate in the Hemispheres collection, Polished Chrome imparts a timeless quality.



Smooth Nickel

With a warm radiance and silver lustre, Smooth Nickel offers a nuanced appearance and texture. A smooth-like treatment refracts light uniquely, especially when used as a dome-shaped adornment, creating a muted glimmer that accentuates the contour of its form. A sophisticated and understated tone makes it a perfect accent for any interior style. Soft to the touch, Smooth Nickel is achieved by gently finishing nickel-plated forged brass. It brings tactile warmth, creating an inviting touchpoint.



1. H01 Lever on Rose, Bone/Polished Chrome | 2. H01 Lever on Rose, Portoro Gold/Smooth Nickel | 3. H01 Lever on Rose, American Walnut/Smooth Nickel.

H01 Lever on Rose

The H01 Lever on Rose achieves a harmonious proportion with a subtly elongated profile. The lever handle resembles an open-frame pill shape, which blends into a concealed rounded plate. This innovative design connects to a flush dome, creating a unique and playful quality. The lever's minimalist outline, rather than a solid form, adds a modern element to the design.

When the device is rotated, the dome pivots, serving both as an aesthetic indicator and a functional anchor. The dome is available in Polished Chrome, Bone, Smooth Nickel, American Walnut and Portoro Gold, allowing versatile configurations to match existing palettes or introduce visual complexity. The H01 Lever on Rose stands as a subtle yet impactful centerpiece in the Hemispheres Collection.



Explore more

H01 Lever on Backplate

Building upon the Lever on Rose concept, the H01 Lever on Backplate creates a more substantial impact on doors. Its oval backplate seamlessly integrates a locking mechanism or privacy turn, discreetly concealed within the low-profile design. The curvilinear form echoes the elegance and geometry reminiscent of Art Deco architecture, offering a timeless aesthetic for use as a distinctive centerpiece or a decorative accent.

The collar, and backplate components harmonise, while the lever can be customised, and the dome is offered in all five collection finishes and materials. This intentional differentiation ensures the core element remains a focal point. The H01 Lever on Backplate is a noteworthy addition to the Hemispheres Collection, showcasing Civilian's dedication to functional elegance and design versatility.



Explore more



1. H01 Lever on Backplate: Polished Chrome/Smooth Nickel | 2. H01 Lever on Backplate: Portoro Gold/Smooth Nickel | 3. H01 Lever on Backplate: American Walnut/Polished Chrome.



H02 Knob on Rose

Compact and striking, the H02 Knob on Rose commands attention. Comprising a rose fitting, intermediary collar, and flush dome-shaped adornment, this design is born from extensive research into proportioning, ergonomics, and precision production. Users can mix dome shapes in five collection finishes and materials, attaching them to Polished Chrome, Bone, and Smooth Nickel collars and rose fittings.

Inspired by the rounded forms in Fritz Lang's *Metropolis*, known for its bold, curvilinear architecture, the chosen materials bring a timeless quality. Meticulously scaled, the dome shape is designed to enhance hand contouring and support when opening a door. The engineered rose fitting, and sturdy collar, contribute to a seamless experience. The H02 Knob on Rose invites users to pause and appreciate the tactile pleasure derived from its responsive ease.



Explore more



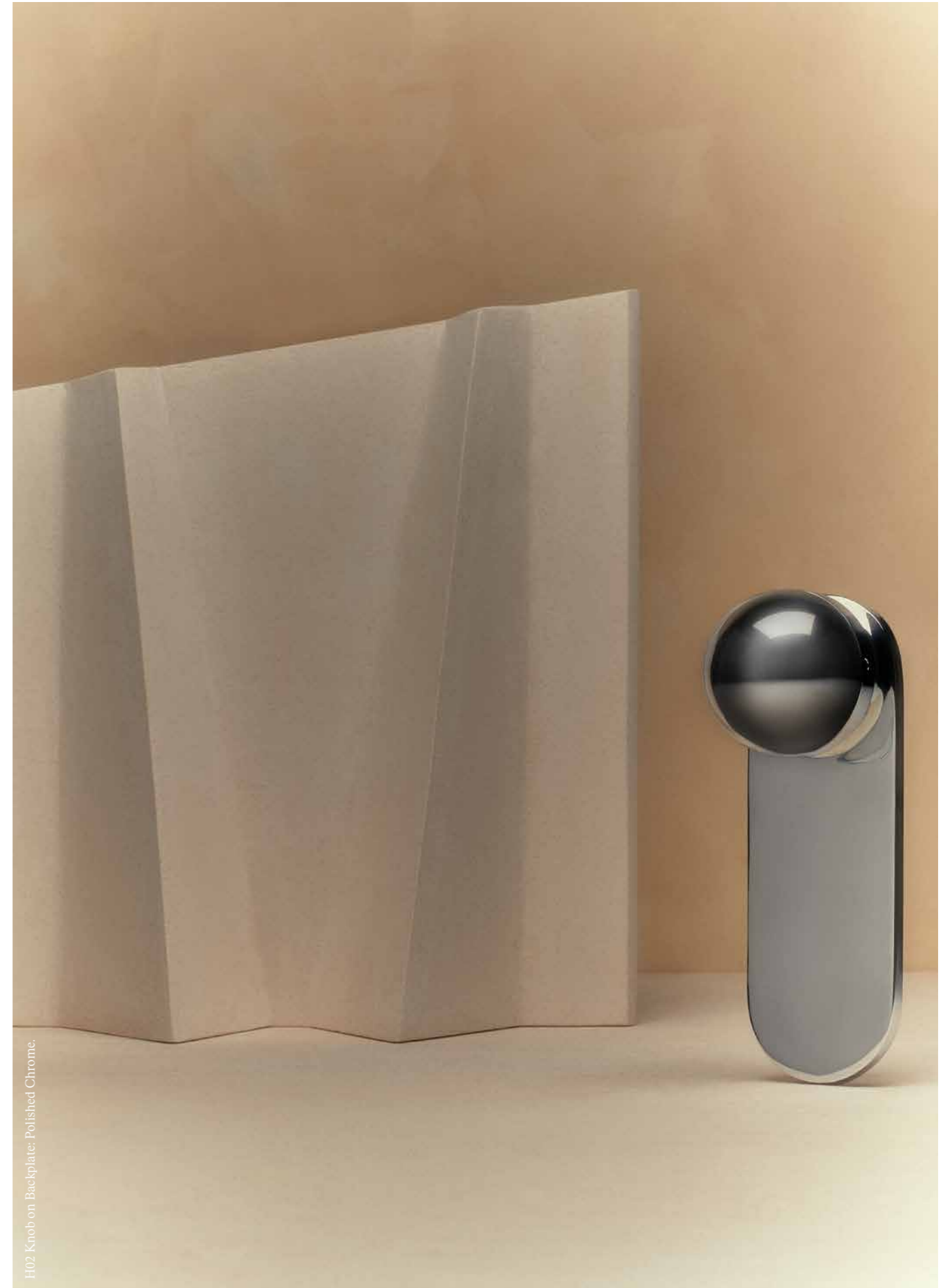
H02 Knob on Backplate

The H02 Knob on Backplate builds on the core knob design by incorporating a supplementary backplate extension for added stability and visual weight. The backplate can house a locking mechanism or privacy turn. Evoking the same curvilinear form, vocabulary and proportioning, the additional backplate element extends from the main spherical dome and rose fitting.

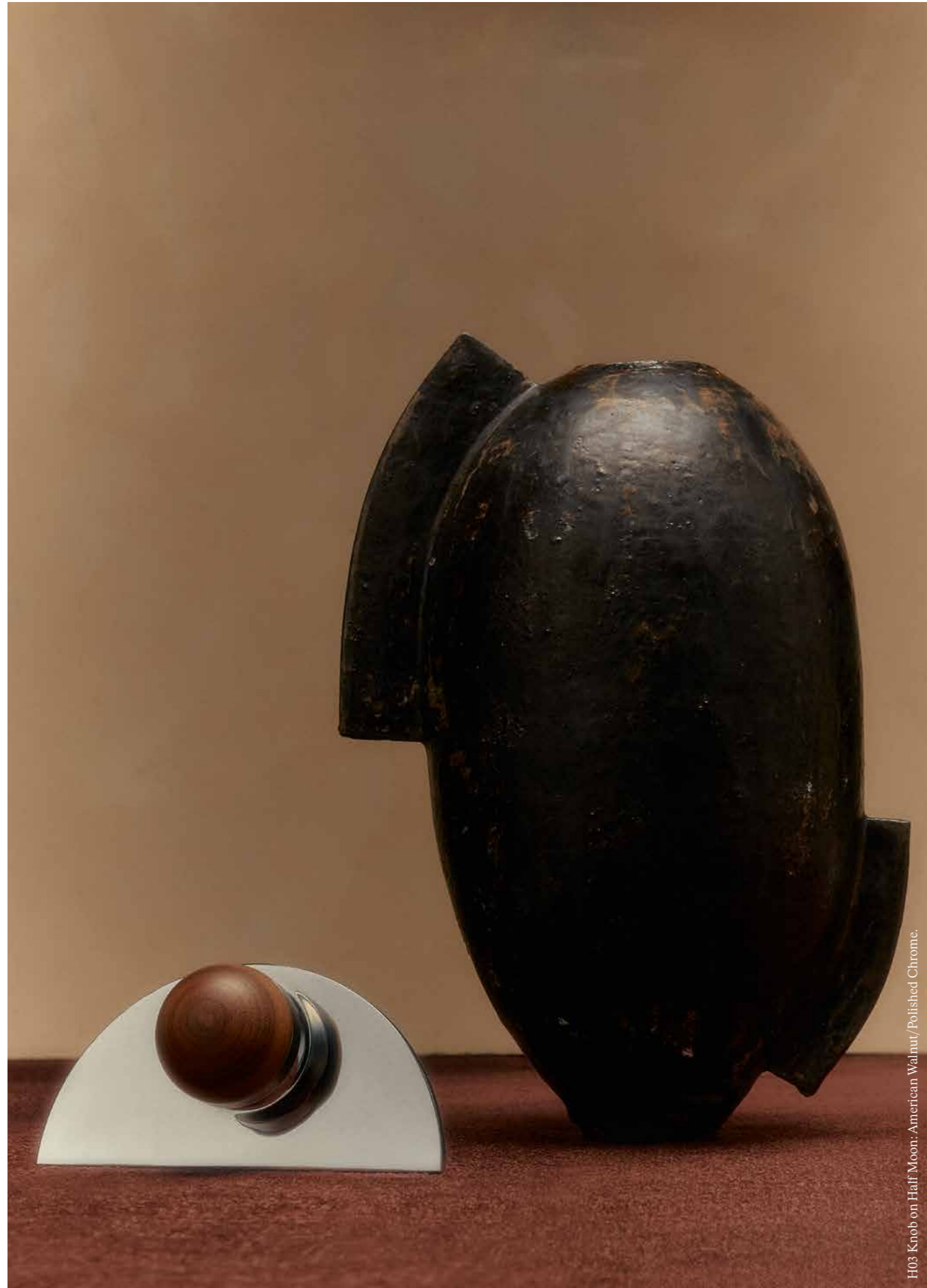
The collar and backplate come in Polished Chrome, Bone, and Smooth Nickel, the dome-shaped adornment is available in all five collection finishes and materials. The combination of rounded and flat forms creates a sophisticated aesthetic, allowing for personalised configurations with either contrast or a mono material approach.



Explore more



H02 Knob on Backplate: Polished Chrome.



H03 Knob on Half Moon: American Walnut / Polished Chrome.

H03 Knob on Half Moon

Securing the central Hemispheres dome design to an expressive half-circle backplate, the H03 Knob on Half Moon embodies purposeful elegance. The radial backplate contrasts the rectilinearity of a door surface, successfully merging geometric precision with organic fluidity—a homage to Japanese designer Takenobu Igarashi's geometrically organic typographic sculpture. Available in Polished Chrome, Bone, and Smooth Nickel, the half-circle backplate frames collar fittings in the same three finishes, while the collection-defining dome shaped adornment is offered in all five finishes and materials, including Portoro Gold and American Walnut. Beyond its decorative appeal, this element is integral to the knob's function. Its semi-spherical form perfectly contours the hand, providing the leverage needed to balance the weight of an opening. Whether introduced individually or in multiples, the H03 Knob on Half Moon significantly influences the interior's ambiance, contributing to either echoing an existing style or introducing a new aesthetic.



Explore more

H04 Short Pull & Long Pull

Anchored by two dome-shaped adornment contact points, the open frame structure of the H04 Pull is offered in both a long and a short variation. Available in an extensive 15 combinations, the product interchanges all five collection finishes and materials for the dome adornments. The pull element comes in Polished Chrome, Smooth Nickel, and Bone; as do the replicated pillar fittings. By combining long rectilinear forms with spherical and curvilinear accents, the H04 Pull draws inspiration from elegantly proportioned Art Deco furnishings. The pull has been designed with versatility in mind, allowing both the elongated and the compact pull to integrate flawlessly into any environment, whether as a handle for appliances, cabinetry, or mounted on a door.



Explore more





1. H01 Lever on Rose: Polished Chrome | 2. H03 Knob on Half Moon: Portoro Gold/Bone | 3. H01 Lever on Backplate: American Walnut/Polished Chrome |
4. H02 Knob on Backplate: Portoro Gold/Smooth Nickel | 5. H06 Sliding Door Pull: Bone | H02 Knob on Rose: Bone.

H06 Sliding Door Pull

The H06 Sliding Door Pull is a notable addition to the Hemispheres collection. Designed around two components, this simple yet highly engineered piece is finely tuned to facilitate the opening of a sliding door. Carefully positioned spherical recesses perfectly contour the index and middle fingers. Comprising a meticulously proportioned faceplate with a geometric cut-out transitioning to an organically contoured rear plate with a concave indentation, this product exhibits a unique formal vocabulary.

Distinct from other modular products in the collection, the H06 Sliding Door Pull maintains a consistent formal language and offers various mono material configurations. Moreover, the faceplate and backing finishes can be mixed, adding a touch of personalisation. With a low-profile design suitable for pocket doors, this sliding door pull combines functionality with aesthetic appeal.



Explore more

H05 Robe Hook / Cupboard Knob

A small yet impactful addition to the Hemispheres collection, the H05 Robe Hook /Cupboard Knob effortlessly combines playfulness with sophistication. This design features a small dome within a wall-mountable pillar. Boasting a geometric recess within the pillar, smooth-to-the-touch contours reflect the distilled forms found in Art Deco architecture.

Available in Polished Chrome, Smooth Nickel, and Bone, the pillar provides a sleek foundation, while the dome-shaped adornment is offered in all five collection finishes and materials. Incorporating different materials, textures, and tactile qualities, this product is highly versatile and can complement any interior design style. As a striking decorative accent, it's well-suited for both bathroom and entryway applications. It can also serve as a stylish addition to built-in cupboards or freestanding wardrobes, and, when inverted, can function as a distinctive cabinet knob.



Explore more

H08 Privacy Turn

The H08 Privacy Turn is produced in mono material configurations using collection finishes Polished Chrome, Smooth Nickel, and Bone. The small but impactful thumb-turn device carries much of the same formal and tactile characteristics as the collection's knobs, levers, pulls, and door stops. The latch component is formed as a slightly-extruded half circle, perfecting the movement of fingers in action. The well-proportioned design offers the right amount of resistance. As both a decorative and functional item, the Privacy Turn elevates a hardware typology that is often overlooked.



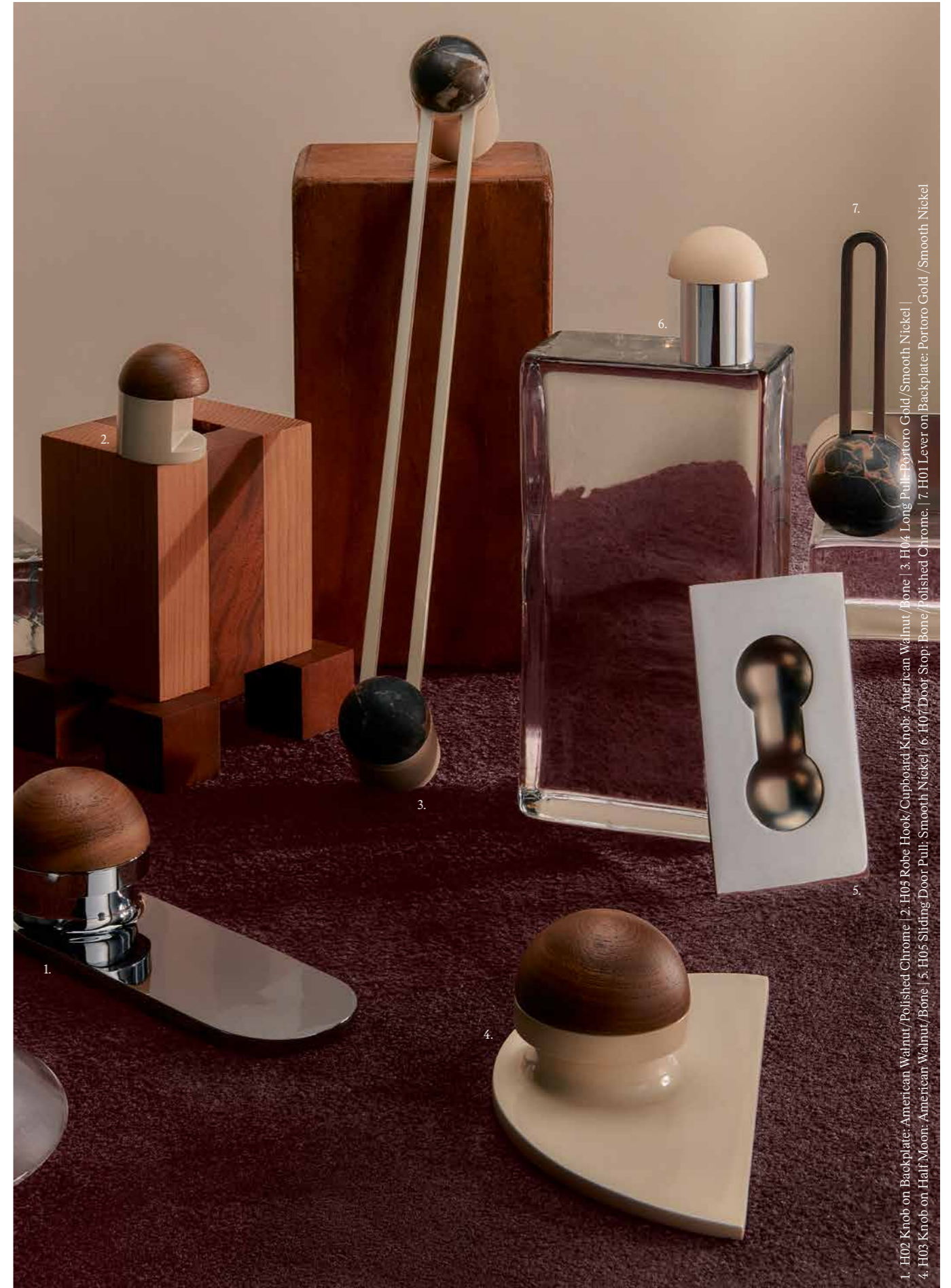
Explore more

H07 Door Stop

Although different from pulls and levers in the Hemispheres collection, the H07 Door Stop utilises many of the same components. Crafted in bone rubber, the top element is both impact-resistant and replaceable, ensuring the product's longevity. Attached to a neck pillar, this component is available in collection finishes, Polished Chrome, Smooth Nickel, and Bone.



Explore more



1. H02 Knob on Backplate: American Walnut/Polished Chrome | 2. H05 Robe Hook/Cupboard Knob: American Walnut/Bone | 3. H04 Long Pull: Portoro Gold/Smooth Nickel | 4. H03 Knob on Half Moon: American Walnut/Bone | 5. H05 Sliding Door Pull: Smooth Nickel | 6. H07 Door Stop: Bone/Polished Chrome | 7. H01 Lever on Backplate: Portoro Gold/Smooth Nickel



bankston.com
@bankston_architectural

Bankston Australia
14-16 Stepney Street
Stepney, South Australia 5069
P. +61 (0)8 8362 1133
E. info@bankstonarchitectural.com.au

Bankston New Zealand
P. +64 (0)6 359 0008
E. info@bankstonarchitectural.co.nz

Bankston International
E. info@bankston.com