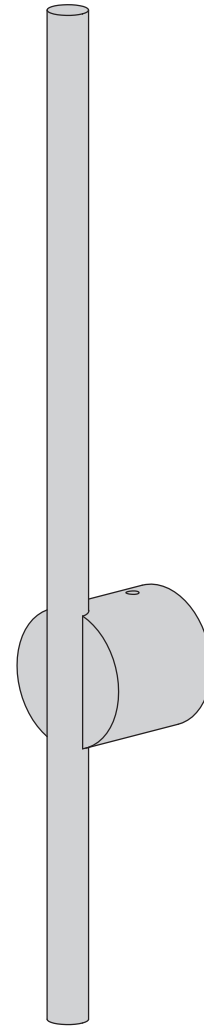


Install Instructions

Associati

BANKSTON



Scan for AU
Warranty



Scan for NZ
Warranty



Scan for
Product &
Finish Care
Information



*Image used for illustration purposes only.

Contact Us Southern Design Group

Australia
14 - 16 Stepney Street,
Stepney, South Australia 5069
P: +61 (0)8 8362 1133
info@bankstonarchitectural.com.au
bankstonarchitectural.com.au

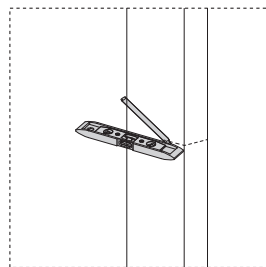
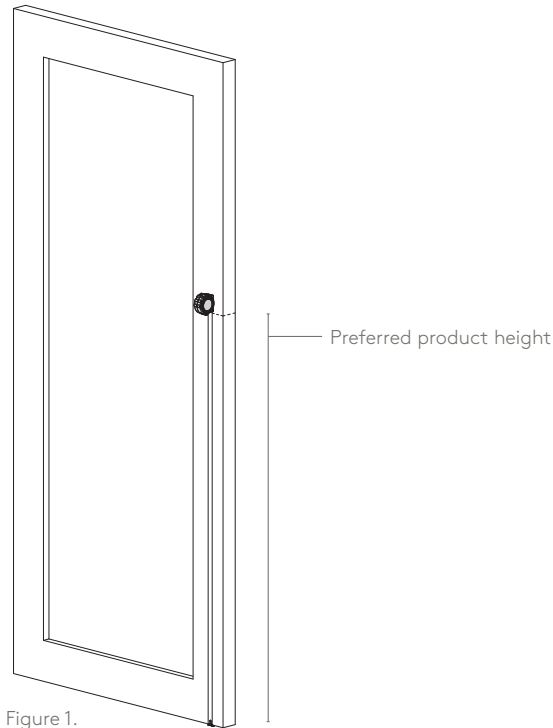
New Zealand
P: +64 (0)6 359 0008
info@bankstonarchitectural.co.nz
bankstonarchitectural.co.nz

SDG Trading Pty Ltd
trading as Bankston Architectural
ACN 008 154 041 | ABN 18 008 154 041



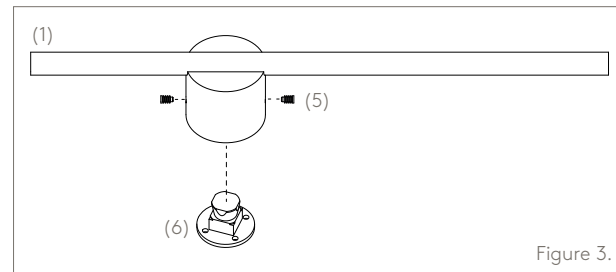
1. Marking the Door

- 1.1 Mark the centre fixing point on the face of your door at the desired height and horizontal distance from the door edge. (Figure 1)
- 1.2 Use a spirit level to draw intersecting horizontal and vertical lines through the fixing point. (Figure 2)

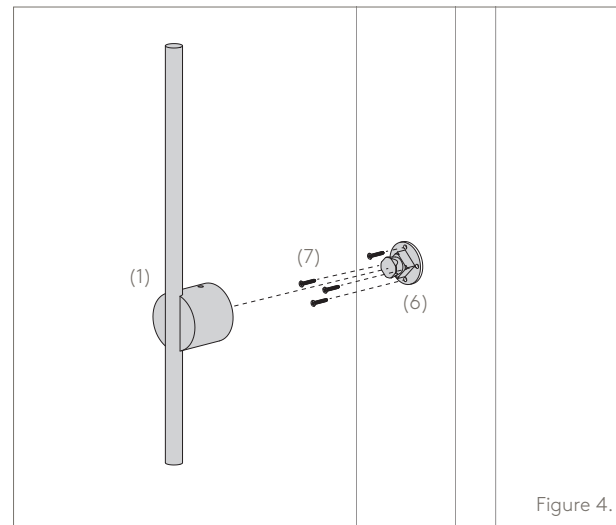


2. Fitting the Pull Handle (face fix method)

- 2.1 Remove fixing plate from the pull handle by loosening top and bottom grub screws. (Figure 3.)



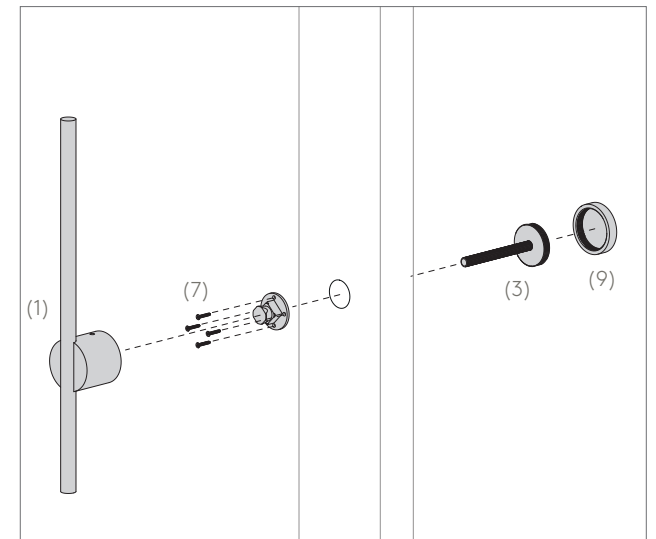
- 2.2 Place the fixing plate on the fixing point, lining the screw holes up with the horizontal and vertical lines.



- 2.3 Mark the twelve o'clock screw hole, remove the fixing plate, and drill a pilot hole at twelve o'clock.
- 2.4 Install fixing plate using single screw through twelve o'clock pilot hole.
- 2.5 Adjust fixing plate ensuring it sits level with horizontal lines and drill three remaining screw holes. (Figure 4.)
- 2.6 Install 3 remaining screws.
- 2.7 Insert pull handle onto fixing plate and tighten grub screws, alternating between the two and tightening a few threads at a time until tight.

3. Fitting the Pull Handle (rear fix method)

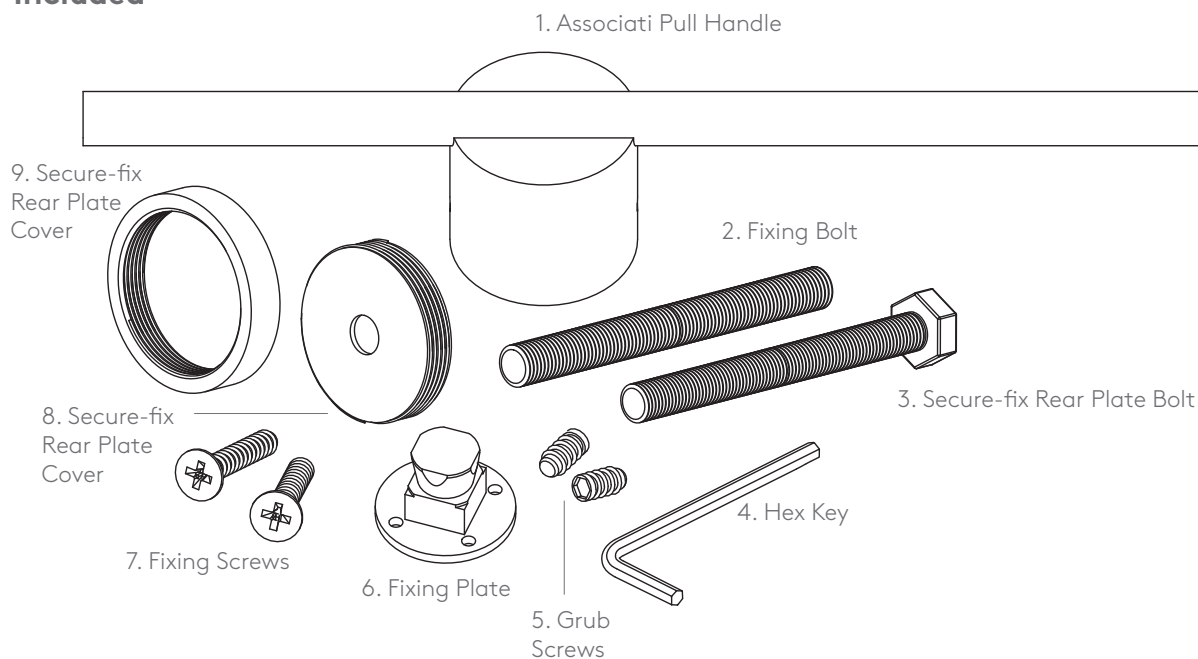
- 3.1 Drill a small pilot hole through the centre fixing point marked in step 1.1
- 3.2 Drill 10mm hole through pilot hole from both sides of the door.
- 3.3 Remove cover from secure-fix rear plate and insert bolt through inner cover, passing it through the back of the door via the drill hole.
- 3.4 If required, mark a cutting point for excess bolt, ensuring there is enough thread for front fixing plate (approximately 20mm). Cut excess bolt and pass back through drill hole.
- 3.5 Remove fixing plate from the pull handle by loosening top and bottom grub screws.
- 3.6 Loosely screw the fixing plate onto the bolt thread, lining the screw holes up with the horizontal and vertical lines.
- 3.7 Mark the twelve & six o'clock screw holes and drill pilot holes.
- 3.8 Install fixing screws at twelve & six o'clock to prevent movement.
- 3.9 Tighten rear bolt and replace secure-fix rear plate cover.
- 3A Insert pull handle onto fixing plate and tighten grub screws, alternating between the two and tightening a few threads at a time until tight



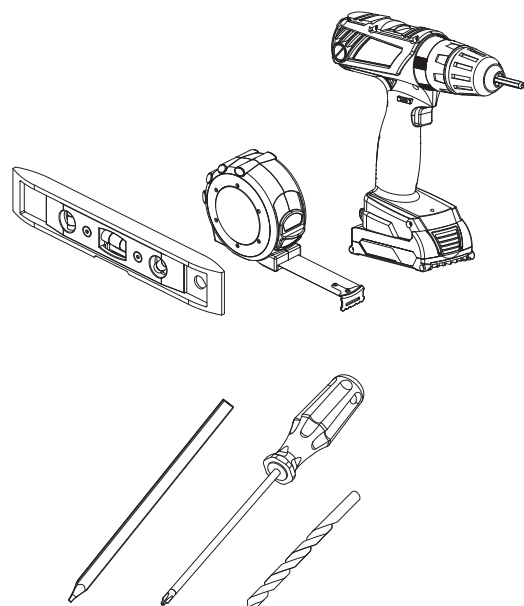
4. Fitting the Pull Handle (back-to-back rear fixing – handle pair)

- 4.1 Repeat Steps 1.1 and 1.3 on both sides of the door.
- 4.2 Drill a small pilot hole through the centre fixing point marked in 1.1.
- 4.3 Drill 10mm hole through pilot hole from both sides of the door.
- 4.4 Pass fixing bolt through the back of the door via the drill hole.
- 4.5 If required, mark a cutting point for excess bolt, ensuring there is enough thread for front and rear fixing plates (approximately 20mm). Cut excess bolt and pass back through drill hole.
- 4.6 Remove fixing plates from the pull handles by loosening top and bottom grub screws.
- 4.7 Firmly screw the fixing plates onto each end of the bolt thread, lining the screw holes up with the horizontal and vertical lines.
- 4.8 Mark the twelve & six o'clock screw holes on both fixing plates and drill pilot holes.
- 4.9 Install fixing screws at twelve & six o'clock on both fixing plates to prevent movement.
- 4A Insert pull handles onto front and rear fixing plate and tighten grub screws, alternating between the two and tightening a few threads at a time until tight.

Included



Not Included



PLEASE NOTE:

The screws provided with Bankston products are made from solid brass. This allows finishes to be matched as closely as possible and prevents the possibility of screws rusting in coastal areas. Please note that screws require pre-drilling.

Please take extra care when fitting.

IMPORTANT:

Please install this door hardware in the following order to ensure its warranty is not voided.

1. Install the door hardware on raw/unfinished door using the instructions provided.
2. Remove door hardware and store safely. Do not place painters tape or masking tape over the product. The tape will damage the finish.
3. Paint/finish door.
4. Reinstall hardware.

