

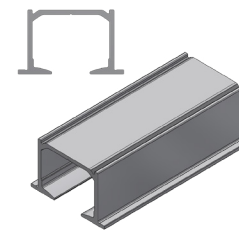


Image: Brio Quick Run 120  
(120F Track with 61JNP Hanger and 120CS Clip Stop)

## Track

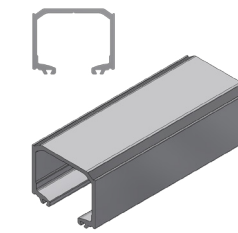
Brio's new 120 Tracks are now available in three profiles to suit a variety of different applications.

### 120C



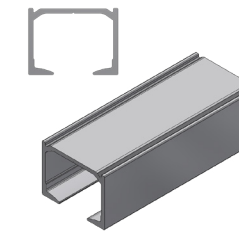
The 120C track is designed for integration into a plasterboard or suspended ceiling, allowing a full height door detail.

### 120E



The 120E track can be soffit fixed, through the roof of the track, or can be wall fixed with the use of wall brackets. The track includes a brush seal slot which allows the use of Brio's Telescopic action accessory. A clip-on fascia is also available.

### 120F



The 120F track can be soffit fixed, through the roof of the track, or can be wall fixed with the use of wall brackets. The flat underside of the track provides a clean and simple aesthetic look.

## Hanger

New hangers have improved polymer wheels for silent operation and low operating force.

### 57JNP



- Easy and simple surface mounting.
- Top plate is quick to assemble and incorporates a latching mechanism for rapid installation.
- Simple and positive height adjustment.

### 58JNP



- Recessed or morticed into panel. Perfect for fabrication and clean fitment. (Suitable for aluminium and timber doors).
- Auto lock attachment between plate and hanger bolt.
- Safe-lock and easy release: Turn locking lever clockwise to secure lock or counterclockwise to allow quick release of bolt.

### 61JNP

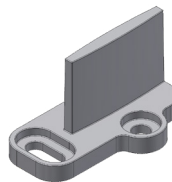


- Virtually invisible clearance of 3-5mm between the track and the panel for a flawless finish.
- Height adjustment and lock off mechanism retain from the tried and trusted Brio Zero Clearance range.
- Available with both short and long cover plate to suit multiple panel applications.

## Floor Guides\* and Clip Stop

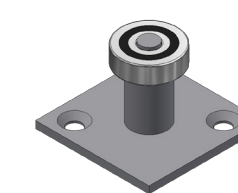
Floor guides are great to stabilise and centre panels when sliding.

### 101N



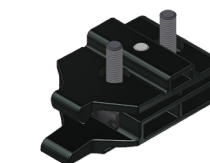
- Nylon saw-cut floor guide provides a simple and effective door guide.

### 104W/94PR



- Stainless steel bearing for doors fitted with an inverted 94 series channel. A small mounting plate makes this guide ideal for cavity sliding or face of wall sliding doors.

### 120CS



- Adjustable clip stop takes hold of the hanger and prevents the panel from bouncing back when opened or closed.

## Additional Accessories\*

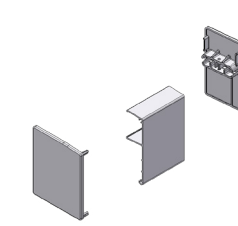
Brio offers a wide range of additional accessories for the Quick Run 120 system.

### 120SCT



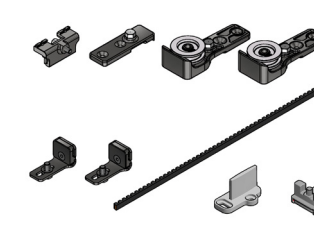
- The Quick Run 120 soft close adds a premium feel to the system, removing door slamming and at the same time, protecting little fingers.

### 123



- Fascias are available in clear anodised.

### TEL/2



- In a multiple door installation, the Telescopic accessory allows for one door to operate the next in a seamless action.

(Available in conjunction with the 58JNP Hanger and the 120E Track only).

# Quick Run 120

\*For more on Quick Run 120 Hardware Specification and accessories, refer to Brio Data Sheet B105.



## Quick Run 120

The Brio Quick Run 120 system is designed for interior sliding panels up to 120kg in residential or commercial applications. It uses four engineered polymer conical shaped wheels with high performance steel bearings for an improved operation that is easier, smoother and faster.

The Quick Run 120 series' hangers provide a flexible solution for high traffic areas, dedicated to suit a wide range of applications and door constructions, such as timber, MDF and aluminium<sup>1</sup>. These new hangers, 57JNP, 58JNP and 61JNP have been designed for simple installation and ease of adjustment, with a comprehensive range of accessories including bottom channels, guides and the Telescopic accessory kit.

This system is suitable for a single panel slide to one side, or two panels bi-parting in a single run of track.

The new tracks (120C, 120E & 120F) are purposely designed to support the shape of the hangers which assists in the improved operation with its internal slopes. It removes the worry for track misalignment and reduces the panel operating force, improving the overall experience.

The tracks can be integrated into a frame (soffit mounted) or wall mounted with the use of wall brackets. A fascia<sup>2</sup> is also available to provide a clean and uninterrupted look.

All 120 tracks are available in 25 micron clear anodised for an improved corrosion performance.

**Max. panel weight:** 120kg

**Max. panel height:** 3000mm

**Min. panel thickness:** 28mm - 32mm\*

\*Min. panel thickness dependant on Hanger application.

**Application:** Interior sliding doors constructed of either Timber, MDF or Aluminium.

<sup>1</sup> Aluminium panels should be only used with the 58JNP hanger.

<sup>2</sup> Fascia option only available in conjunction with the 120E Track.

### About Allegion™

Allegion (NYSE: ALLE) is a global pioneer in seamless access, with leading brands like CISA®, Interflex®, LCN®, Schlage®, SimonsVoss® and Von Duprin®. Focusing on security around the door and adjacent areas, Allegion secures people and assets with a range of solutions for homes, businesses, schools and institutions. Allegion had \$2.7 billion in revenue in 2020, and its security products are sold around the world.

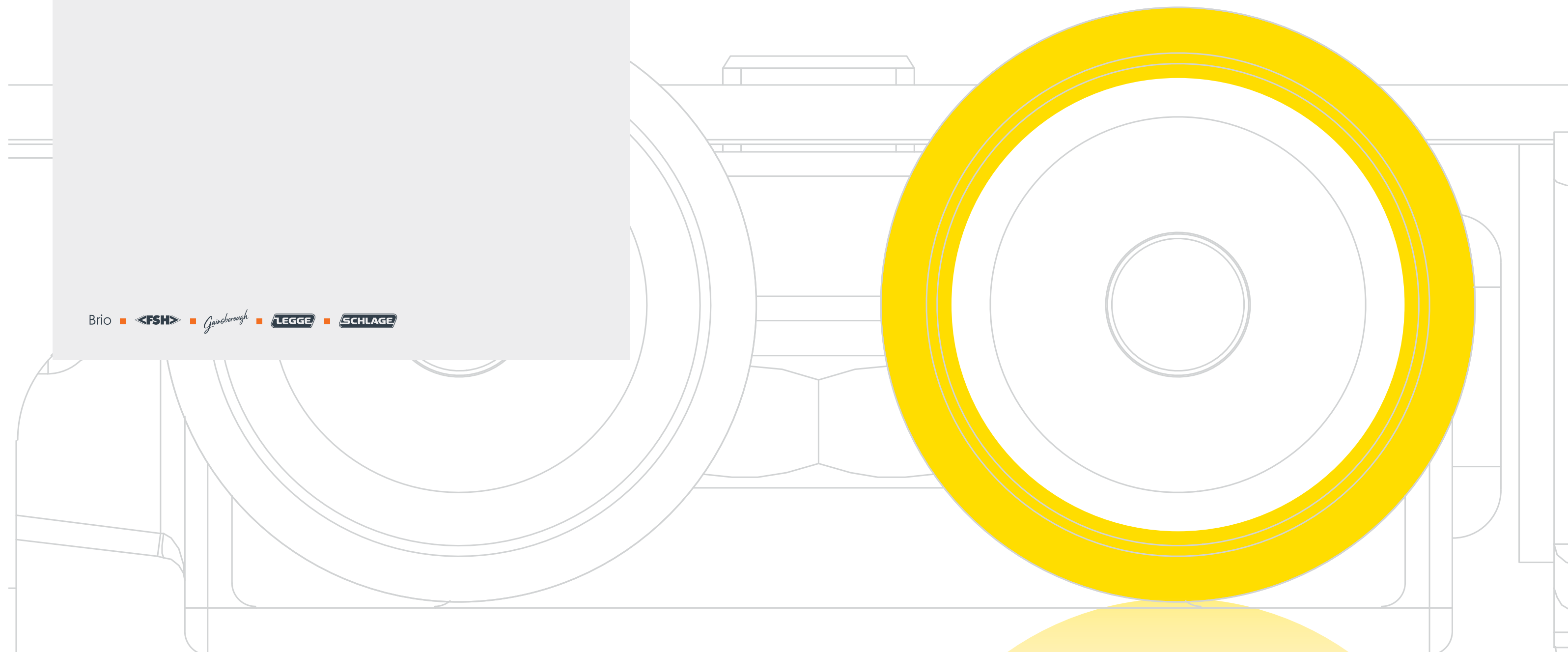
For more, visit [www.allegion.com.au](http://www.allegion.com.au) or [www.allegion.co.nz](http://www.allegion.co.nz)

Brio ■ <FSH> ■ Gainsborough ■ LEGGE ■ SCHLAGE

# Brio®

## Brio® Quick Run 120

Top hung sliding hardware



Allegion (Australia) Pty Ltd  
Freephone 1800 098 094  
Email [info.au@allegion.com](mailto:info.au@allegion.com)  
[www.allegion.com.au](http://www.allegion.com.au)

Allegion (New Zealand) Limited  
Freephone 0800 477 869  
Email [nzinfo@allegion.com](mailto:nzinfo@allegion.com)  
[www.allegion.co.nz](http://www.allegion.co.nz)

999/BB\_QUICKRUN120  
© 2021 Allegion

