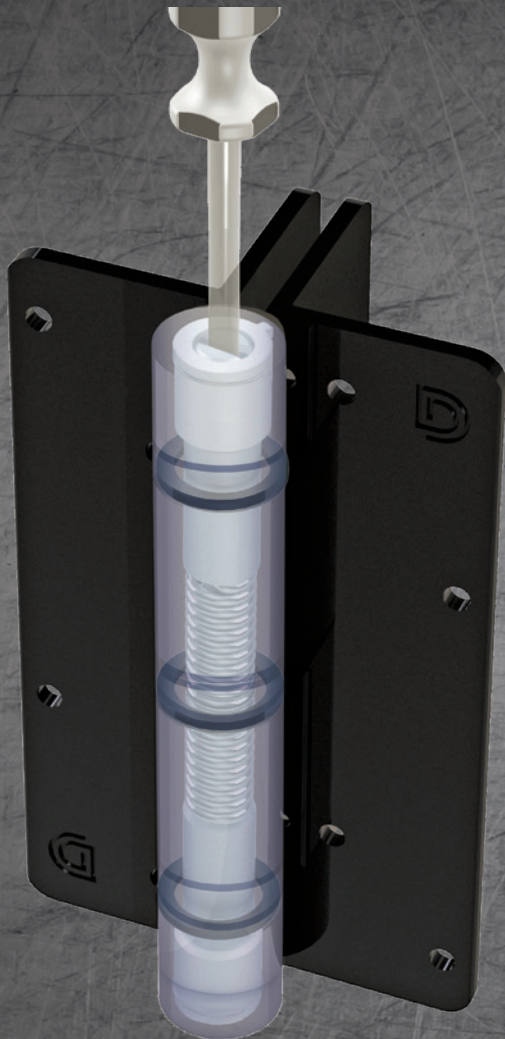


Traditionally styled, self-closing, aluminum gate hinges



Patented tension adjustment

- Adjust tension from both ends (tension adjustment always facing up)
- 6 tension settings for finer adjustment (suit a range of metal gates)
- Single-handed tension adjustment (using slot-head screwdriver)

Polymer pivot design

Low-friction polymer pivot washers provide long life & low maintenance

Side-fixing legs

For quick alignment during installation plus added fixing strength

Stainless steel spring

Internal torsion spring constructed of stainless steel to prevent binding and staining

Versatile installation

Suits left- or right-swinging gates

Gate weight

Self-closes gates up to 44 lb (20kg)

3 finishes available

Aluminum with powder-coated finish in Black, Bronze or White (KF3A1BL model only available in black)



1" (25mm) narrower leaf model

Now 10% smaller in size. Designed to suit smaller post sizes, with a narrower leaf. Only available in black.



KF3A



KF3A1BL

