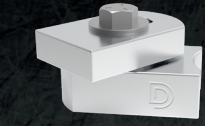
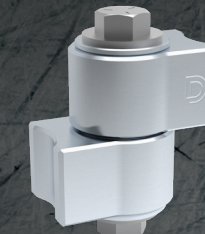


BOLT-ON BADASS™ RANGE								
CODE	PRODUCT DESCRIPTION	**GAP VARIANCE	FINISH	BEARINGS	MAX GATE WEIGHT	YOKE MATERIAL	BODY MATERIAL	HINGE HEIGHT
C13750	Baby Bolt-on	76-89mm	Zinc	1	140kg	Steel	Steel	102mm
C13750B	Powder coat Baby Bolt-on	76-89mm	Matt Black Zinc	1	140kg	Steel	Steel	102mm
C13770	Half Bolt-on	67-80mm	Zinc	2	450kg	Steel	Steel	191mm
C13780	Steel/Aluminum Half Bolt-On	67-80mm	Zinc / Unfinished	2	270kg	Steel	Alum	191mm
C13700	Bolt-on	74-86mm	Zinc	2	450kg	Steel	Steel	191mm
C13700B	Powder coat Bolt-on	74-86mm	Matt Black Zinc	2	450kg	Steel	Steel	191mm
C13720	Face Mount Bolt-on	13-25mm	Zinc	2	500kg	Steel	Steel	191mm
C13720B	Powder coat Face Mount Bolt-on	13-25mm	Matt Black Zinc	2	500kg	Steel	Steel	191mm
C13740A	102mm Aluminum Half Bolt-on	73-86 mm	Unfinished	2	270kg	Alum	Alum	152mm
C13740	102mm Combo Steel/Alum Half Bolt-on	73-86 mm	Zinc / Unfinished	2	270kg	Steel	Alum	152mm
C13760A	152mm Aluminum Body Half Bolt-on	73-86 mm	Unfinished	2	270kg	Alum	Alum	152mm
C13950	Barrel Hinge – Bolt or weld-on	Fixed 13mm	Zinc	4	680kg	Steel	Steel	150mm
C12051	102mm Round Bolt-on	70-81mm	Zinc	2	450kg	Steel	Steel	191mm
C12053	152mm Round Bolt-on	70-81mm	Zinc	2	450kg	Steel	Steel	191mm
C12054	203mm Round Bolt-on	70-81mm	Zinc	2	450kg	Steel	Steel	191mm



Baby Hinge C13600™  
1 Sealed Bearing



Versa Weld C13075™  
2 Sealed Bearings



Self-Closing C13850™  
3 Sealed Bearings



Strap Hinge C13900™  
4 Sealed Bearings

SELF-CLOSING BADASS™ RANGE (SC)								
CODE	PRODUCT DESCRIPTION	**GAP VARIANCE	FINISH	BEARINGS	MAX SC GATE WEIGHT	YOKE MATERIAL	BODY MATERIAL	HINGE HEIGHT
C13825	Weld-on, Round Closer	64-76mm	Zinc	3	*200kg	Steel	Steel	127mm
C13850	Weld-on, SC Set	64-76mm	Zinc	3/2	140kg	Steel	Steel	127/97mm
C13825R	Center Mount, Round Closer	61-74mm	Zinc	3	*200kg	Steel	Steel	191mm
C13850R	Center Mount, Round SC Set	61-74mm	Zinc	3/2	140kg	Steel	Steel	191/97mm
C13825FM	180° Open, Face Mount, Weld-On Closer	13-25mm	Zinc	3	*200kg	Steel	Steel	152mm
C13850FM	180° Open, Face Mount Weld-on SC Set	13-25mm	Zinc	3/2	140kg	Steel	Steel	191/152mm
C13835	Center-Mount, Bolt-On, Closer	74-86mm	Zinc	3	*200kg	Steel	Steel	220mm
C13860	Center-Mount Bolt-On SC Set	74-86mm	Zinc	3/2	140kg	Steel	Steel	220/191mm
C13835FM	180° Open, Face Mount Bolt-On Closer	13-25mm	Zinc	3	*200kg	Steel	Steel	220mm
C13860FM	180° Open, Face Mount Bolt-On SC Set	13-25mm	Zinc	3/2	140kg	Steel	Steel	220/191mm

\* Max self-closing weight of 200kg is with 2 closers mounted to gate frame

WELD-ON BADASS™ RANGE								
CODE	PRODUCT DESCRIPTION	**GAP VARIANCE	FINISH	BEARINGS	MAX GATE WEIGHT	YOKE MATERIAL	BODY MATERIAL	HINGE HEIGHT
C13600	Baby Steel to Steel	64-76mm	Zinc	1	140kg	Steel	Steel	33mm
C13650	Baby Alum to Alum	64-76mm	Unfinished	1	140kg	Alum	Alum	33mm
C13670	Baby Steel/Alum Combo	64-76mm	Zinc/Unfinished	1	140kg	Steel	Alum	33mm
C13200	Alum/Steel Combo	61-74mm	Unfinished /Zinc	2	270kg	Alum	Steel	97mm
C13300	Steel/Alum Combo	61-74mm	Zinc/Unfinished	2	270kg	Steel	Alum	97mm
C13400	Aluminum	61-74mm	Unfinished	2	270kg	Alum	Alum	97mm
C13800	Stainless Steel	61-74mm	304 Stainless	2	500kg	Stainless	Stainless	97mm
C13000	The Original	61-74mm	Zinc	2	500kg	Steel	Steel	97mm
C13000R	Center Mount, Round Pivot Hinge (Pair)	61-74mm	Zinc	2/2	500kg	Steel	Steel	97mm
C13500	Heavy Duty	61-74mm	Zinc	3	680kg	Steel	Steel	97mm
C13520	100 Year	64-76mm	Zinc	3	680kg	Steel	Steel	104mm
C13075	VersaWeld™	Fixed 70mm	Zinc	2	500kg	Steel	Steel	95mm
C13050	Face Mount Weld-on	13-25mm	Zinc	2	500kg	Steel	Steel	98mm
C13900	152mm (6") Strap Hinge	Fixed 13mm	Zinc	4	680kg	Steel	Steel	150mm
C13925	254mm (10") Strap Hinge	Fixed 13mm	Zinc	4	680kg	Steel	Steel	150mm
C13975	Uphill Strap Hinge Set Includes 1x C13900 + 1x C13925	Fixed 13mm	Zinc	4/4	680kg	Steel	Steel	150mm

\*\* Adjustable yoke for perfect installations. For welding yoke to round fence post, weld 38 x 13x 3mm A36 steel bar channel to yoke first. After cooling, weld bar channel to fence post. Flat posts: fixed 70mm. Round Posts: min gap is 0.



## Brilliant Design. Epic Results.

DESIGNED BY FENCING CONTRACTORS FOR FENCING CONTRACTORS



### High-temp sealed bearings

Safe to powdercoat after installation\*  
1,2,3 or 4 bearings per hinge.



### Zinc electroplated

All components are zinc plated for lasting protection against rust and corrosion.



### Highly Adjustable

Post brackets are horizontally adjustable to provide highly accurate installation. Self-closing hinges have tension-adjustment.



### Maintenance-free

Sealed bearings never need greasing. No maintenance required – ever!



### Heavy duty reliability

CNC machined plus precision bushing provides near frictionless rotation



### Industry tried & tested

Tested to over 1 million open cycles. Lifetime Warranty (limited)

\* Excludes self-closing hinges and C13800 Stainless Steel BadAss



## The Shut It® Difference

- CNC machined to the tightest tolerances in the industry
- Unique bushing design: near-frictionless movement and maintenance free
- High-quality, sealed radial ball-bearings require no greasing/maintenance
- Four sealed bearing configurations: 1, 2, 3 or 4 bearings per hinge
- Most components zinc electroplated\* to inhibit rust and corrosion
- Innovative steel Stover lock-nuts prevent loosening and slipping
- Brackets have horizontal slots for precise alignment
- Designed by fencing contractors for fencing contractors

\* Excludes stainless steel and aluminium models



©Copyright D&D Technologies Pty Ltd. 2023 14/08/2023 PROMO 172



## ENGINEERED GATE HARDWARE SOLUTIONS



www.ddtech.com

D&D Technologies Pty Ltd  
Unit 6, 4-6 Aquatic Drive, Frenchs Forest NSW 2086  
Tel: (02) 9454 7888  
E-mail: sales@ddtech.com.au  
Part of ASSA ABLOY

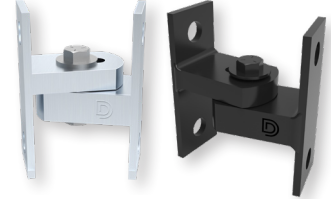


Designed to reduce wear on industrial gates and automated gate operator systems



# Bolt-On Range

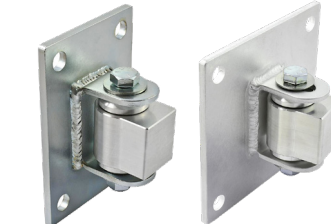
- CI3750 Baby Bolt-On – Steel to Steel**  
**CI3750B Baby Powdercoat Bolt-On**
- For metal residential or smaller commercial gates
- Adjustable bracket for precise installations
- Flat, bolt-on brackets for through bolting
- **Maximum gate weight: 140kg**



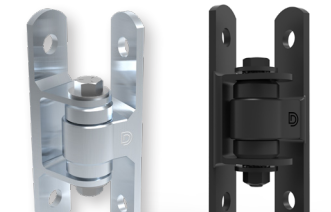
- CI3770 Half Bolt-On – Steel to Steel**  
**CI3780 Half Bolt-On – Steel to Alum**
- Welds to gate frame and bolts to fence post
- Adjustable barrel for precise installations
- Flat, bolt-on bracket for through bolting
- **CI3780 Maximum gate weight: 270kg**
- **CI3770 Maximum gate weight: 450kg**



- CI3740 Wide Bracket, Half Bolt-On 102mm**  
**CI3740A Wide Bracket, Half Bolt-On 102mm**  
**CI3760A 152mm – Alum to Alum**
- Designed to reduce fence post flexing & fatigue
- Wide mounting plates and four anchor points
- Welds to gate frame and bolts to fence post
- **Maximum gate weight: 270kg**



- CI3700 Bolt-On**  
**CI3700B Powdercoat Bolt-On**
- High traffic, no maintenance, smooth operation
- Adjustable bracket for flat posts and frames
- Flat, bolt-on brackets for through-bolting
- **CI3700 Maximum gate weight: 450kg**



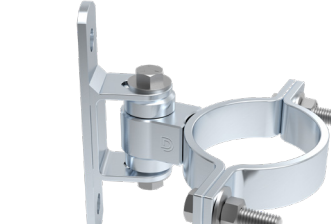
- CI3720 Face-Mount Bolt-On**  
**CI3720B Powdercoat Face-Mount Bolt-On**
- Offers a full 180° gate opening angle
- Adjustable bracket for flat or square posts
- Flat, bolt-on brackets for through-bolting
- Can achieve gate gaps as small as 13mm
- **CI3720 Maximum gate weight: 500kg**



- CI3950 Barrel, Bolt or Weld-On**
- Designed to bolt-on or weld-on heavy-duty gates
- Offers a full 180° gate opening
- The strongest most versatile hinge on the market
- Gate gap from 13-89 mm depending on mounting
- **Maximum gate weight: 680kg**



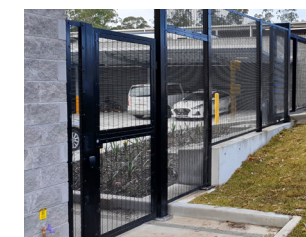
- CI2051 Bolt-On 102mm – Steel to Steel**  
**CI2053 Bolt-On 152mm – Steel to Steel**  
**CI2054 Bolt-On 203mm – Steel to Steel**
- Straps to round posts and bolts to flat gate frame
- Ideal for square to round-post installations
- Adjustable, flat, bolt-on bracket for through bolting
- **Maximum gate weight: 450kg**



# Self-Closing Range (SC)

Shut It® self-closing hinges for heavy or high-traffic gates. Provide safety, privacy and security by ensuring gates close and latch properly. Easy to install and adjust for perfect installation.

- CI3825 Weld-On, Closer**  
**CI3850 Weld-On, SC Set**
- Set contains CI3825 + CI3800
- Suits restricted-access and industrial gates
- Eliminates the need to fit a gate closer
- Installation must include a gate-stop or latch/lock
- 5 tension-adjustment settings (inc. bracket)
- **Max self-closing gate weight: 140kg (CI3850 set)**
- **Max self-closing gate weight: 200kg (2 x CI3825)**



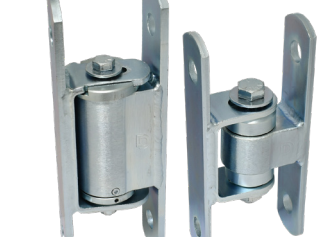
- CI3825R Centre Mount, Round Post, Closer**  
**CI3850R Centre Mount, Round Post, SC Set**
- Set contains CI3825R + CI3000R
- Post and frame mounting brackets are concaved
- Easy weld-on installation for round posts
- Eliminates the need to fit a gate closer
- 5 tension adjustment settings
- **Max self-closing gate weight: 140kg (CI3850R set)**
- **Max self-closing gate weight: 200kg (2 x CI3825R)**



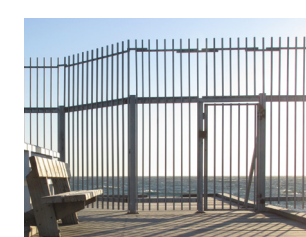
- CI3825FM Weld-on, Face-Mount, Closer**  
**CI3850FM Weld-on, Face-Mount, SC Set**
- Set contains CI3825FM + CI3050
- Offers a 180° gate opening for unobstructed passage
- Horizontally adjustable from 13mm to 25mm
- Quiet and smooth operation
- **Max self-closing gate weight: 140kg (CI3850FM set)**
- **Max self-closing gate weight: 200kg (2 x CI3825FM)**



- CI3835 Centre-Mount Bolt-On Closer**  
**CI3860 Centre-Mount Bolt-On SC Set**
- Set contains CI3835 + CI3700
- High traffic, no maintenance, smooth operation
- Compatible for use on aluminium gates
- Flat, bolt-on brackets for through-bolting
- **Max self-closing gate weight: 140kg (CI3860 set)**
- **Max self-closing gate weight: 200kg (2 x CI3835)**



- CI3835FM Face-Mount Bolt-On Closer**  
**CI3860FM Face-Mount Bolt-On SC Set**
- Set contains CI3835FM + CI3720
- Offers a 180° gate opening for unobstructed passage
- Horizontally adjustable from 13mm to 25mm
- Flat, bolt-on brackets for through-bolting
- **Max self-closing gate weight: 140kg (CI3860FM set)**
- **Max self-closing gate weight: 200kg (2 x CI3835FM)**



# Weld-On Range

Shut It® weld-on, heavy-duty hinges have high-temp, sealed bearings that are safe to powdercoat\* after installation. Gate, fence, hinge and the weld finish can all colour match.

\*Except the self-closing CI3850, CI3850R, CI3825R or stainless steel model CI3800

- CI3600 Baby – Steel to Steel**  
**CI3650 Baby – Alum to Alum (flat posts only)**  
**CI3670 Baby – Steel to Alum**
- Designed for lighter, metal gates
- Fastener slots for easy adjustment
- Ideal for both square and round-post installations
- **Maximum gate weight: 140kg**



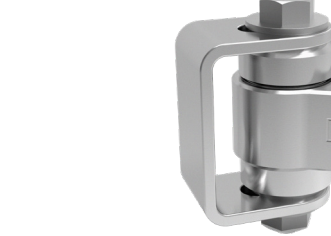
- CI3200 Combo – Alum to Steel**  
**CI3300 Combo – Steel to Alum**
- Two, sealed maintenance-free bearings
- Adjustable bracket for precise installations
- Ideal for both square and round-post installations
- **Maximum gate weight: 270kg**



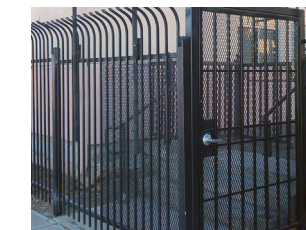
- CI3400 Aluminium – Alum to Alum**
- Two, sealed maintenance-free bearings
- Adjustable bracket for precise installations
- Ideal for flat post installation
- **Maximum gate weight: 270kg**



- CI3800 Stainless Steel – 100% Stainless**
- Two, sealed maintenance-free bearings
- Constructed in 304 stainless steel including the bearings, shaft (bolt), washers and lock nut
- Adjustable bracket for precise installations
- Ideal for both square and round-post installations
- **Maximum gate weight: 500kg**



- CI3000 Original – Steel to Steel**  
**CI3000R Centre-Mount Original**
- Two, sealed maintenance-free bearings
- Adjustable bracket for precise installations
- Ideal for both square and round-post installations
- Also available in rusted finish
- **Maximum gate weight: 500kg**



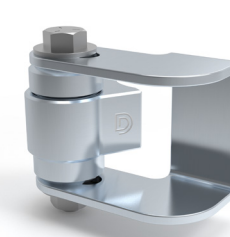
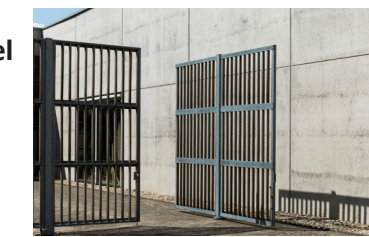
- CI3500 Heavy-Duty – Steel to Steel**
- Suits extra-wide, solid or heavy gates
- Suitable for use with automatic gate openers
- Offers 50% more load than the ORIGINAL BADASS
- Adjustable bracket for precise installations
- Ideal for both square and round-post installations
- **Maximum gate weight: 680kg**



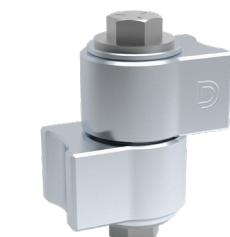
- CI3520 100 Year – Steel to Steel**
- Suits extra-wide, solid or heavy gates
- Suitable for use with automatic gate openers
- Thicker bracket and higher-tensile chromate shaft
- Adjustable bracket for precise installations
- Ideal for both square and round-post installations
- **Maximum gate weight: 680kg**



- CI3050 Face-Mount, Weld-On – Steel to Steel**
- Two, sealed maintenance-free bearings
- Offers a 180° gate opening for unobstructed passage
- Horizontally adjustable from 13mm to 25mm
- **Maximum gate weight: 500kg**



- CI3075 VersaWeld™ Hinge – Steel to Steel**
- Two, sealed maintenance-free bearings
- Ideal for both square and round-post installations
- Smoother than traditional block or barrel hinges
- Fixed gate gap of 70mm
- **Maximum gate weight: 500kg**



- CI3975 Uphill Hinge Set – Steel to Steel**  
**CI3900 Strap-Hinge 152mm (6")**  
**CI3925 Strap-Hinge 245mm (10")**
- Four, sealed maintenance-free bearings
- Installation can be welded or bolted
- Can open to 180° depending on mounting
- Leaf widths can be cut to suit post/gate size
- **Maximum gate weight: 680kg**

