

Heavy duty hinges tested to over 1 million cycles. Adjustable and powder-coatable.

Heavy duty shaft (bolt)

On all hinges; gives the highest weight rating in the industry

Zinc electroplating

- Inhibits rust and corrosion
- No need to grind off before welding
- On all components except stainless steel, aluminum and 'rusted look'

Post bracket

- Horizontally adjustable for accurate installations
- Precision machining that fully utilizes the adjustment slots and maximizes welding surfaces

Unique Stover[™] locknut

- Innovative, shaped threads provide a vibration-resistant friction fit so nut stays firm
- Top thread section is deformed to create two or three locking zones (can be re-used 2-3 times)
- All-metal locknuts withstand higher temperatures than nylon-insert locknuts

Precision bushing

Distributes gate load for optimal performance and longer life

Tightest tolerances in the industry

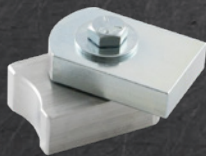
- CNC machined to perfection
- Virtually frictionless rotation

Hinge Body (on gate)

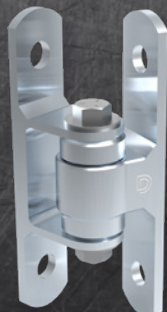
- Fits round or flat surfaces
- Decorative, brushed finish

NEW: High-temp sealed bearings

- Safe to powder-coat with hinges installed on gate (excluding CI3850 self-closing hinge and CI3800 Stainless Steel BadAss)
- No greasing, no maintenance.
- Hinge options with 1, 2, 3 or 4 bearings
- Performs better than roller cages that require periodic greasing



Baby BadAss[™] CI3600
1 Sealed Bearing



Bolt-On BadAss[™] CI3700
2 Sealed Bearings



Self-Closing CI3850
3 Sealed Bearings



BadAss[™] Strap Hinge
4 Sealed Bearings