

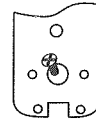
Parts List, Installation and General Information

Very Important!

Please fasten all screws by hand. Do not use an electric screwdriver or drill as over tightening is not recommended.

Please Note:

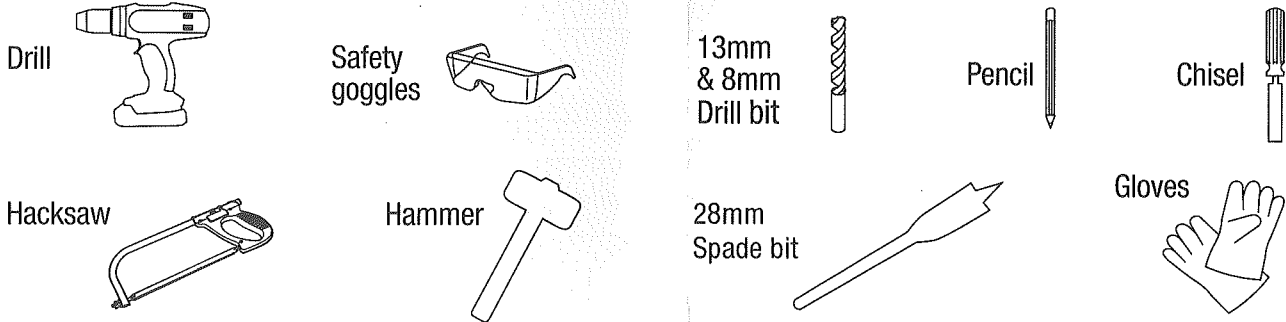
You will need to loosen the screw in the large central hole on the back of your digital lock to change the position of your handle so it is horizontal.



SAFETY TIP:

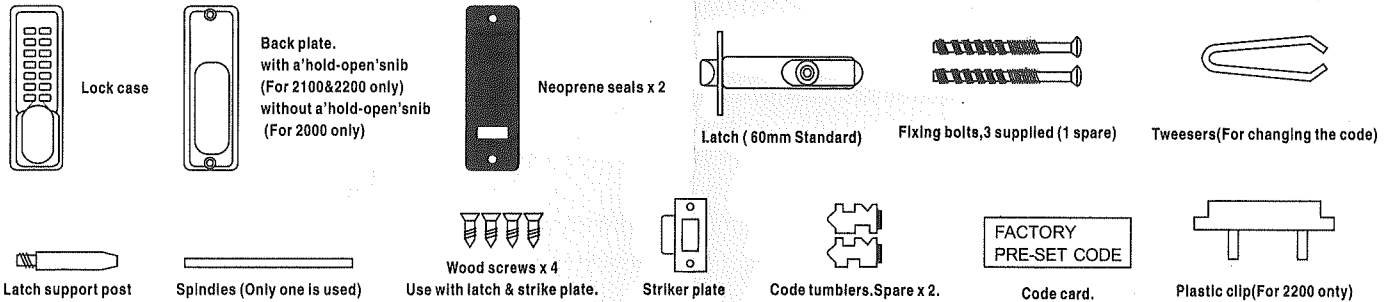
When assembling or installing this product wear protective gloves and eyewear.

Installation Tools Required:



PARTS LIST

Please make sure you have received all the following parts:



SPECIAL NOTES (For 2100 & 2200 only)

- The 'Hold-open' model is equipped with a snib on the backplate. This enables the latchbolt to be held open when required.
- Before commencing installation check that all parts are working correctly: Press the code according to the code card and then the knob should turn and return easily under spring pressure. If you intend to change the code, you should do it before installing the lock. See the code change instructions.
- Make sure that the lever handle of the backplate moves freely. Check that the snib will engage and hold the handle in the 'latch-open' position, if it is a model with latch stopper.
- Check that the latch bolt moves freely by pressing at the end and also by turning the fiat spindle in the latch cam.

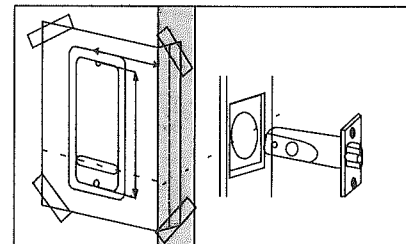
INSTALLATION

1 APPLY THE TEMPLATE

- Tape the template to the door. Make sure that you fold it along the appropriate line, depending on the backset of the latch (60mm or 70mm).

Mark and drill all six 10mm holes.

Use a chisel to clear the line of 4 x 10mm holes into a single slot

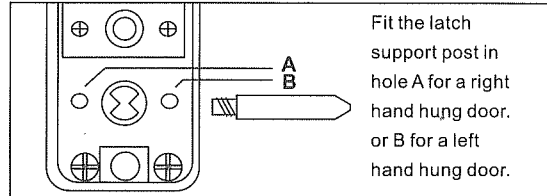


Parts List, Installation and General Information

POSITIONING AND FIXING THE LATCH

2 LATCH SUPPORT POST

- Mark a central point on the 'centre line of latch' on the door edge.
- Drill a 25mm hole x 85mm deep.
- Insert the latch into the hole, and draw around the face plate.
- Remove the latch and cut a 3mm rebate so that the face plate will fit flush with the door.
- Secure the latch with the wood screws.



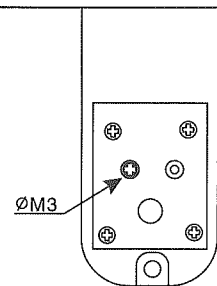
3 BLUE HANDING SCREW

When fitting a backplate to a left-hand door the BLUE screw must go in the right-hand hole and vice versa.

The adjustment method of door opening direction on interior panel, First, please choose left side or right side for door opening and closing direction.

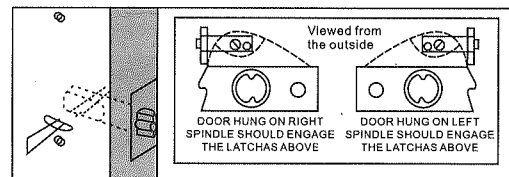
If the door opening direction is left side, please unscrew the Blue M3 screw (as shown on instruction) on the back cover of the interior panel, screw it into the screw hole on the RIGHT.

If the door opening direction is right side, then keep Blue M3 screw stay at the LEFT screw hole.



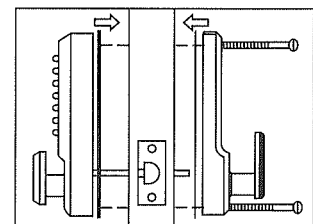
4 POSITIONING THE SPINDLE

- Select the spindle length to suit the thickness of the door and cut as necessary.
- Insert the spindle through the slot in the door and make sure that it engages the latch correctly for the hand of the door- (see insert diagram.)



5 FIXING THE LOCK

- Cut the fixing bolts to suit the door thickness, allowing at least one threaded section to screw into the lockcase.
- Hold the lock case and the backplate, with the seals, onto the door with the spindle in position.
- Using the fixing bolts screw everything together through the top and bottom holes of the backplate. Before final tightening make sure the lock is vertical, and test the mechanism to ensure that it is all moving easily.

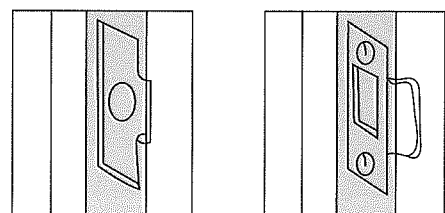


DO NOT CLOSE THE DOOR UNTIL YOU ARE SURE THAT THE CODE WORKS.

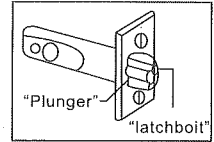
DO NOT over tighten the fixing bolts as this may cause distortion and lead to poor operation.

6 FITTING THE STRIKE PLATE

- Position the strike plate on the door so that it lines up with the flat of the latchbolt, NOT THE PLUNGER.
- Mark the inner and outer edges of the strike plate and cut a 1mm rebate so that it fits flush with the surface of the door frame.
- Drill or cut a recess for the latchbolt.
- Fit the strike plate using only one wood screw as first to ensure that it is positioned accurately. The latch bolt, and not the plunger, should enter the aperture easily, and be held without too much 'play'. When satisfied secure the strike with the second screw.



N.B. The plunger beside the latchbolt deadlocks the latchbolt and protects it against manipulation. IT MUST NOT enter the strike plate aperture when the door is closed.

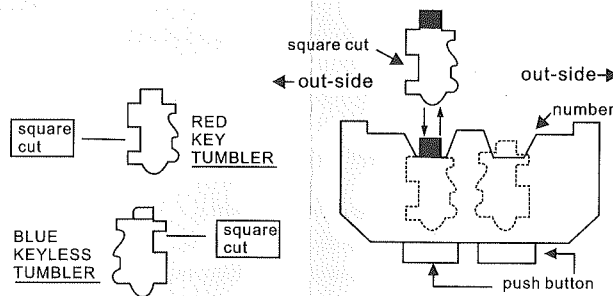


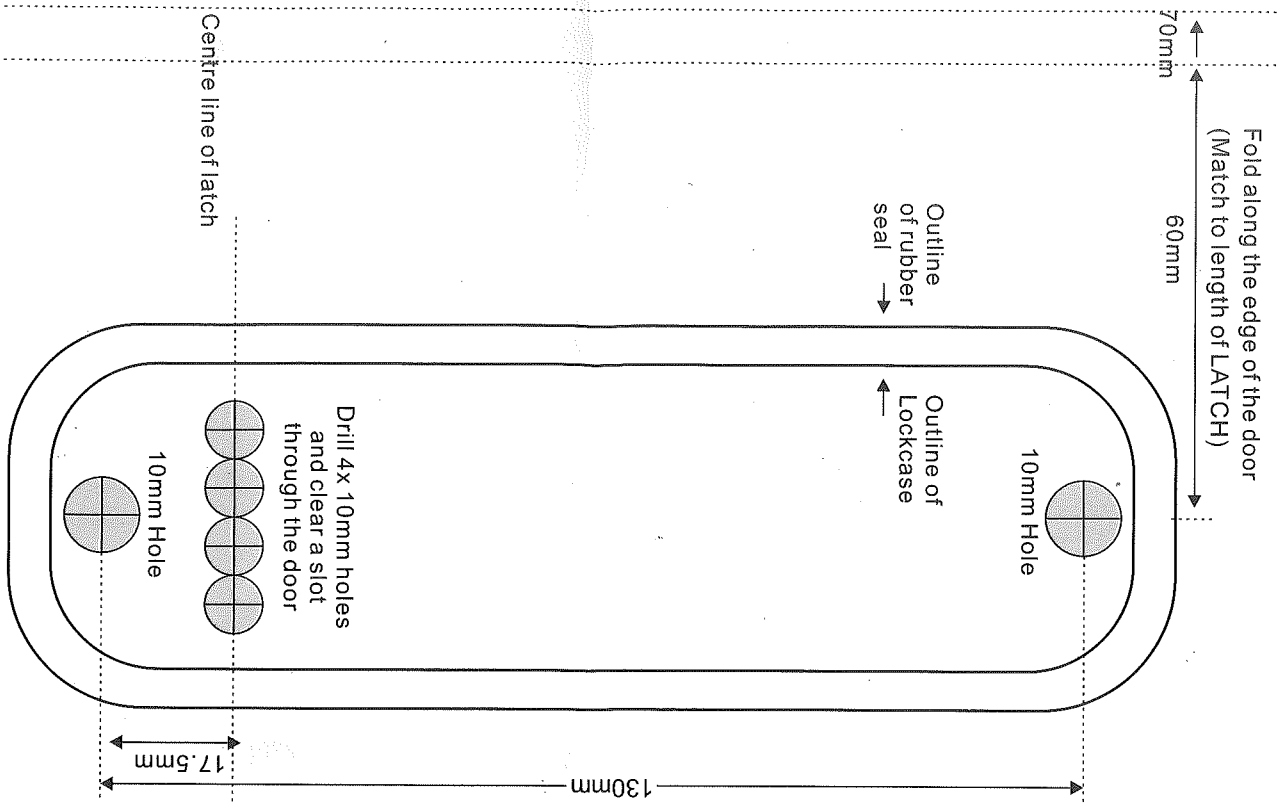
7 REMOVAL OF THE SNIB FUNCTION (For 2200 only)

"If the snib function is not required, you can remove it by unscrewing the 4 screws, one from each corner, (2 long & 2 short) from inside the backplate. This will enable the metal plate, the snib, a small spring & a ball bearing to be removed. Please note that the metal plate, only needs to be replaced plus the enclosed plastic clip to cover the aperture."

HOW TO CHANGE YOUR CODE NUMBER

- 1) Remove the lock from the door.
- 2) Remove the 4 retaining screws from the back of the 'Outside lock body'. Take EXTRA care to keep the lock body on a flat surface, when you are removing the plate, because there are a lot of small components inside.
- 3) You will now see that there are 5 red coloured key tumblers & 8 blue coloured keyless tumblers plus 1 clear tumbler (C' botton).
- 4) To change your code, push the 'C' button down and hold it. You can then easily remove one or more of your key & keyless tumblers, using the tweezers supplied.
- 5) Please note you should NEVER remove the 'C' tumbler.
- 6) Please note the different shapes of tumbler, before reinserting them into the lock body. Firstly there is a difference in shape between the key & keyless tumblers. illustrated below, And secondly when refitting the iumblers into the lock body, they must be fitted facing the right way. again see the illustration below.
- 7) After you have refitted the tumblers and made a note of the new code, please replace the metal plate with the 4 screws.
- 8) PLEASE NOTE. With the spare tumblers provided, you can either increase the number of digits in your code to 6 or 7 or reduce to 4.





TEMPLATES

