

# FLAT-STRAP

NYLON pivot hinges for 35mm doors

Data Sheet

PFS.35

'Flat-Strap'  
Nylon pivots

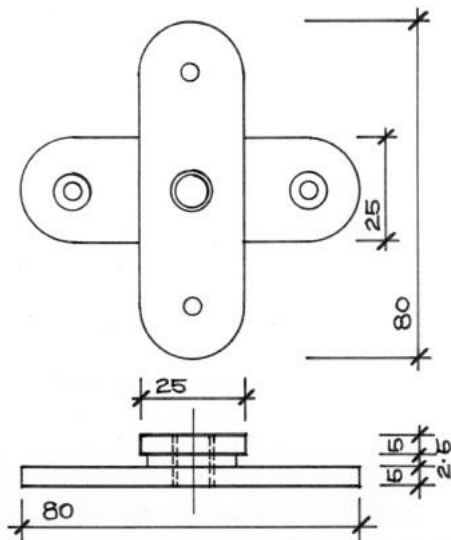
Angle-Shoe Pivots

25A 43-51 Giles St  
Kingston ACT 2604  
Australia  
61 2 6232 6455

MADE IN CANBERRA AUSTRALIA



**FLAT-STRAP**  
PFS35 Nylon pivot set



## APPLICATIONS

- 35mm doors to 35kg (1 3/8" 70 lbs) 'invisible' doors in sheetrock
- bedroom, bathroom, wardrobe, coat, linen & laundry closets
- internal joinery, room dividers, screens, laundry chutes
- external shutters, louvre blades, ventilators & access panels

## LOAD CAPACITY

- 35Kg - tested to 500,000 cycles (90° open/close)
- ideal for hollow core or semi-solid doors to 35kg
- maximum door size 2400 high 1000 wide 36 thick

## ADVANTAGES

- simple hand tool installation without special trade skills
- non-handed universal semi-concealed pivots
- door frames and architrave trim can be eliminated
- painting work reduced to roller work (cutting-in eliminated)
- latch and lever can be eliminated - no hinge knuckles

## LIMITATIONS

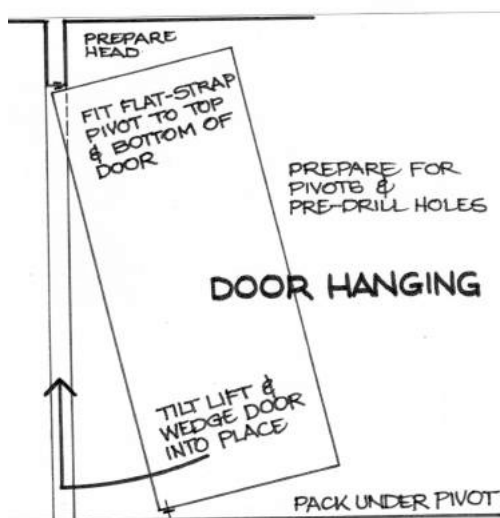
- Flat-Straps require more time & care to install than Angle-Shoes
- Pre-drill all screw holes and use a 450mm long screwdriver

## PIVOT SET MATERIAL & FINISHES

- Nylon pivot set (top and bottom pivots are the same)
- Nylon parts - polyamide/molybdenum di-sulphide blend
- Nylon finish - dark charcoal grey (can be painted)
- etch prime + epoxy or auto spray cans
- Rivet material - bronze (copper alloy)

## NOTES FOR DESIGNERS & SPECIFIERS

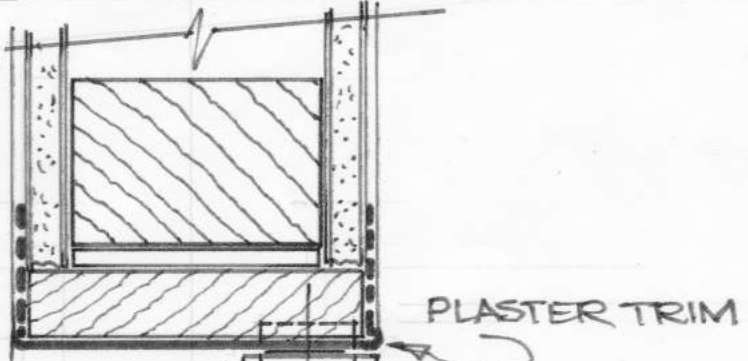
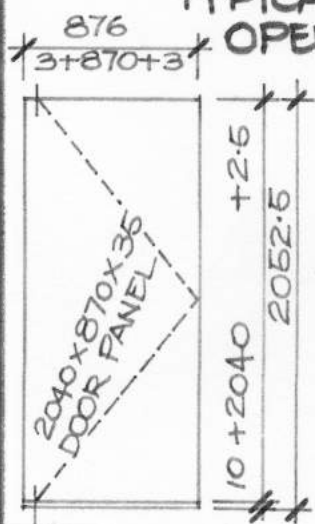
- provides simple durable longevity for light timber doors
- pivots are riveted together and do not come apart
- detail with care - prototype for a full understanding
- plumb & square openings are required for set-plaster work
- 870mm wide doors between rooms (820mm for bathrooms)
  - 870 doors = 786mm open width for furniture access
  - 820 doors = 736mm open width for bathrooms
- pivot doors in walls do not swing open 180°
- the pivot stile swings 'in' 53mm when the door opens 'out'
- Moly-Poly blend included for UV resistance & lubrication



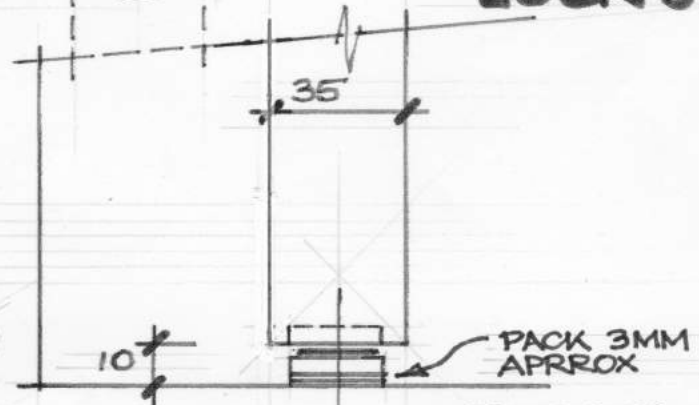
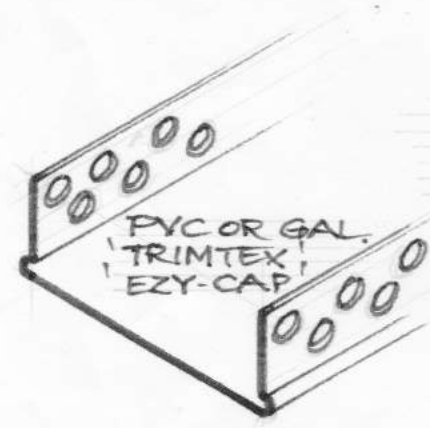
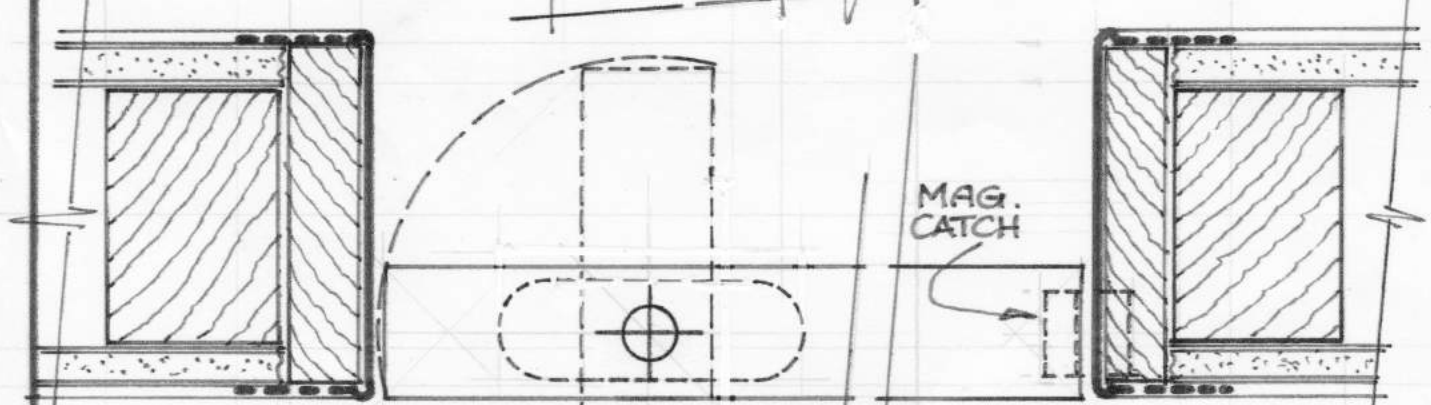
**ANGLE-SHOE PRODUCTS**  
angleshoe.com.au

Unit 25A 43-51 Giles St. Kingston ACT 2604 AUSTRALIA  
Email - hstyles@bigpond.net.au Tel (02) 6232 6455

TYPICAL DOOR  
OPENING



HEAD  
DETAIL



FLOOR  
DETAIL

ANGLE-SHOE PFS 35 PIVOT DETAILS

9/9/13 1:2@A4 Styles 61 2 6232 6455