



INST.LG1014

LG10, LG11, LG12, LG13, LG14

IVES®

Lock Guard

Installation Instructions

1

1/4 - 20 SCREW

"A"

CHECK THIS DIMENSION FOR CLEARANCE BEFORE DRILLING HOLES.

WELD STUD

NOTE: THE DIMPLE DEPTH IS 1/4" (6)

3

CL OF HOLES

SEE DIM. "A" ON REVERSE SIDE

1. MARK HOLES ON EACH SIDE OF DOOR.
2. SUBTRACT 1/8" (3) FROM CENTERLINE OF HOLES ON SHORT SIDE OF BEVEL.

2

EQUAL

CL OF LATCH

EQUAL

4

* 5/16" (8) DIA.

EXTERIOR SIDE OF DOOR

* DRILL HOLE FOR LOCK GUARD (DRILL HOLES FROM EACH SIDE TO ENSURE PROPER ALIGNMENT.)

	QTY	SCREW DETAILS
LG10	2	1/4-20 X 1-1/4" OPHMS
LG11	2	1/4-20 X 1-1/4" OPHMS
LG12	2	1/4-20 X 1-1/4" OPHMS
LG13	2	1/4-20 X 1-1/4" OPHMS
LG14	4	1/4-20 X 1-1/4" OPHMS

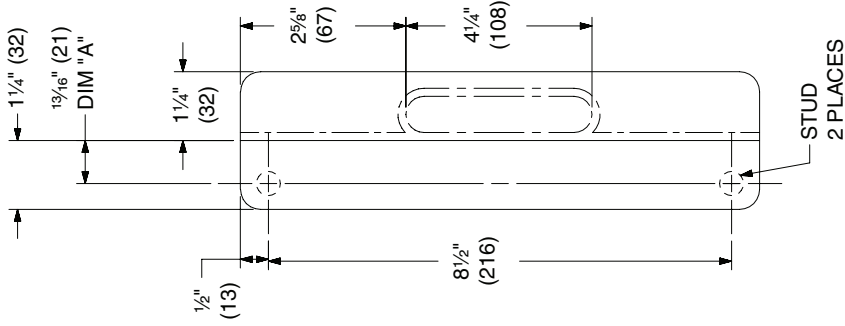
NOTE: DIMENSIONS IN () ARE MILLIMETERS.

5

INTERIOR SIDE OF DOOR

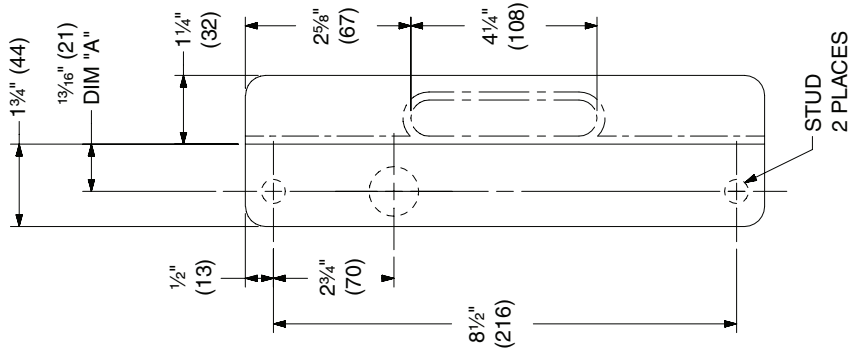
INSTALL SCREWS AND TIGHTEN SECURELY.

LG10
OVERALL SIZE 2-1/2" X 9-1/2"



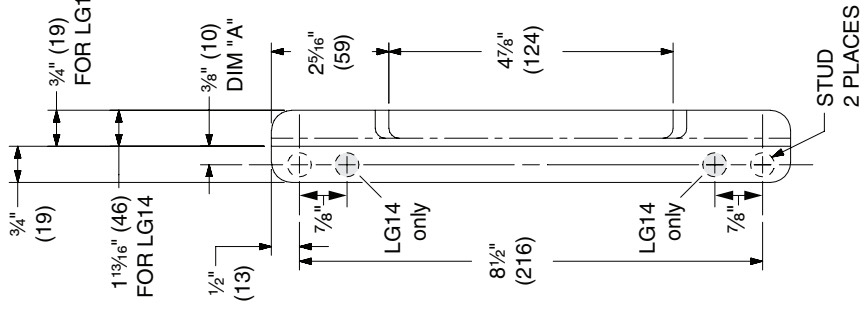
STANDARD LINE - FOR
ESCUTCHEONS 2 3/4" (70)
WIDE OR LESS

LG11
OVERALL SIZE 3" X 9-1/2"



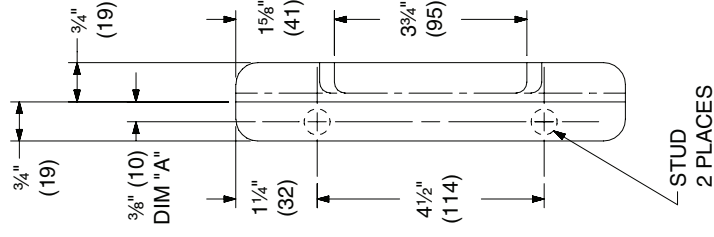
LH (RHR) SHOWN
RH (LHR) OPPOSITE
PUSH SIDE VIEW SHOWN
FOR NARROW STILE
ALUMINUM DOORS
AVAILABLE WITHOUT HOLE

LG12 & LG14
LG12 OVERALL SIZE 1-1/2" X 9-1/2"
LG14 OVERALL SIZE 2-9/16" X 9-1/2"



FOR USE WITH WIDE
ESCUTCHEONS 3 1/2" (89)
WIDE OR LESS

LG13
OVERALL SIZE 1-1/2" X 7"



CYLINDRICAL LOCK
APPLICATIONS