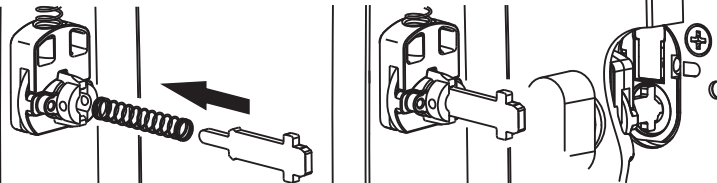


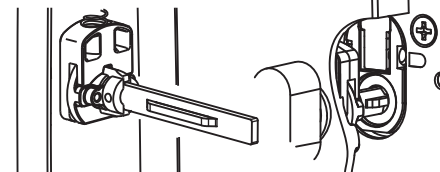
1. Remove lock from mortice.
2. Place template in correct alignment, and mark hole centres accurately and drill holes required.
3. If required cut screws to required length, deburr end of cut screw. Note: Do not cut with pliers or sidecutters as this is likely to cause thread damage upon assembly.

### Standard Tailbar



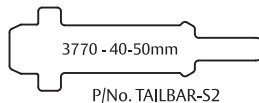
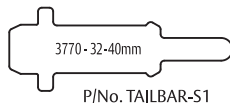
1. Insert spring and tailbar into end of turn knob as above. Push in tailbar until engaged and retained in turn knob. Refer below for correct tailbar for your door thickness.
2. Engage tailbar end into the turn snib adapter as shown.

### Emergency Tailbar



1. For Emergency Turns pass tailbar completely through the turn snib adapter.

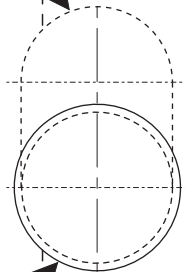
### Tailbar sizes for Door Thickness range



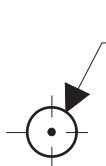
DRILL 2 HOLES  
20mm DIA  
FOR OVAL  
CYLINDER ONLY



DRILL HOLE  
22mm DIA  
FOR TURN  
KNOB ONLY



DRILL  
6.5mm DIA  
FOR THROUGH  
FIX INSTALLATION

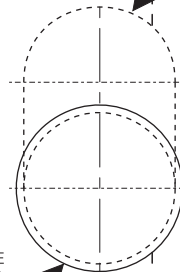


FOLD ALONG THIS LINE AND  
ALIGN TEMPLATE WITH EDGE OF DOOR

DRILL  
6.5mm DIA  
FOR THROUGH  
FIX INSTALLATION



DRILL HOLE  
22mm DIA  
FOR TURN  
KNOB ONLY



DRILL 2 HOLES  
20mm DIA  
FOR OVAL  
CYLINDER ONLY



89mm BACKSET

60mm BACKSET

60mm BACKSET

89mm BACKSET

**ASSA ABLOY**

ASSA ABLOY Australia Pty Limited  
235 Huntingdale Rd, Oakleigh, VIC 3166  
ABN 90 086 451 907 ©2016

The Global Leader in Door Opening solutions