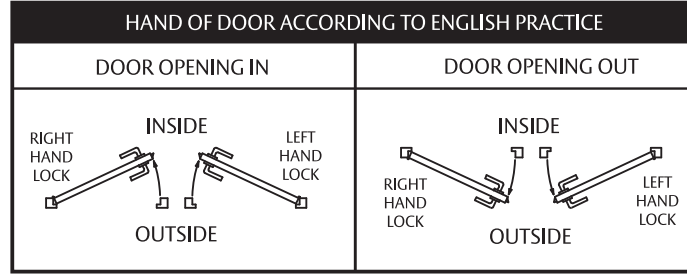
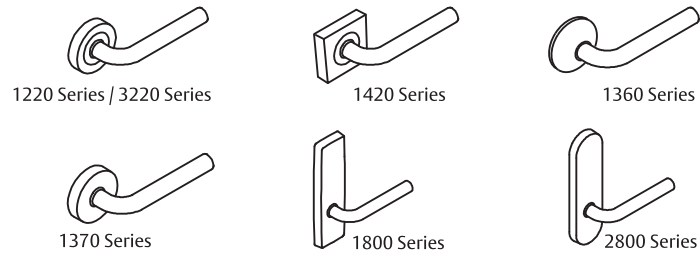


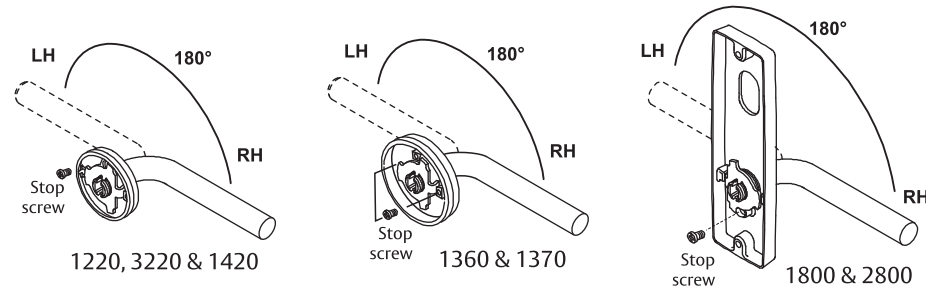
# LOCKWOOD COMMERCIAL DOOR FURNITURE MOUNTING INSTRUCTIONS



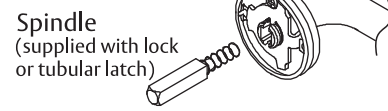
THIS IS A COMMON TEMPLATE FOR INSTALLATION OF LOCKWOOD COMMERCIAL DOOR FURNITURE WHEN USED WITH THE LOCKWOOD SERIES MORTICE LOCKS. NOTE: BEFORE DRILLING HOLES CHECK SUITABILITY WITH LOCKSET AND FURNITURE TO BE FITTED. FOR ALL OTHER DETAILS REFER TO LOCK MOUNTING INSTRUCTIONS.

**ENSURE LOCK IS REMOVED FROM MORTICE BEFORE DRILLING HOLES DO NOT DRILL HOLES RIGHT THROUGH DOOR TO PREVENT POSSIBLE DAMAGE TO DOOR FACE.**

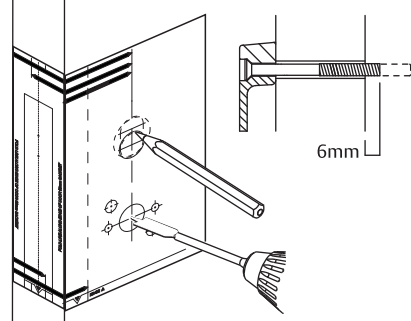
## HANDING OF FURNITURE



- Verify correct handing of furniture on the door required. Lever should rotate downwards.
- For handing of furniture with non-handed levers or knobs, position the handle by rotating it 180° to suit the door LH or RH then insert the 4mm stop screw to suit.
- Stop screws are supplied in an accessory packet in the box.

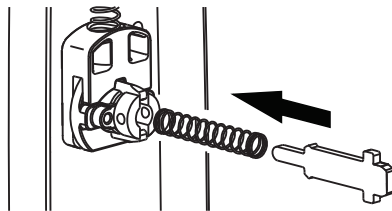
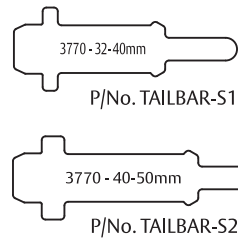


## INSTALLATION OF FURNITURE

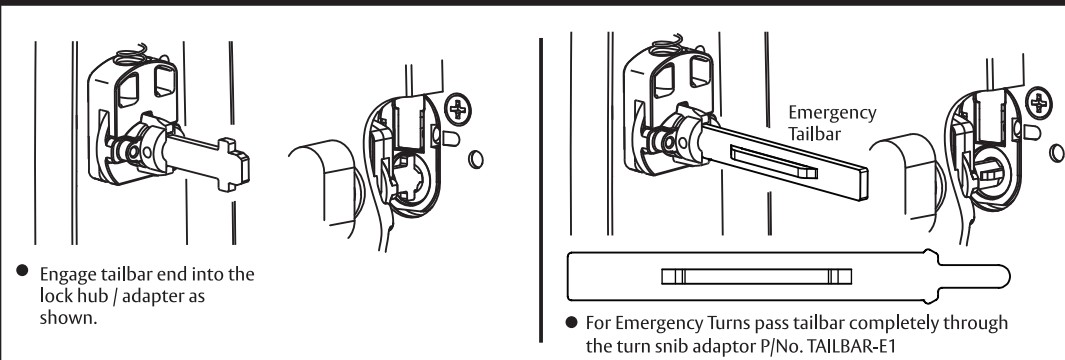


- Remove lock from mortice.
- Place template in correct alignment, and mark hole centres accurately and drill holes required.
- If required cut screws to length as indicated, deburr end of cut screw. Note: Do not cut with pliers or sidecutters as this is likely to cause thread damage upon assembly.

Tailbar sizes for Door Thickness range



- Insert spring and tailbar into end of turn knob as above. Push in tailbar until engaged and retained in turn knob.

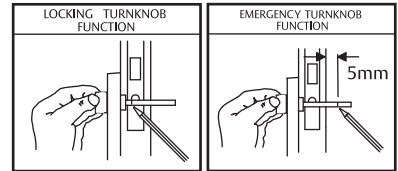


- Engage tailbar end into the lock hub / adaptor as shown.

- For Emergency Turns pass tailbar completely through the turn snib adaptor P/No. TAILBAR-E1

### LOCKS WITH TURN KNOBS AND CONNECTED TAILBARS

- Mark and cut connecting bar as shown.
- Turn knob to be in the vertical position when unlocked.



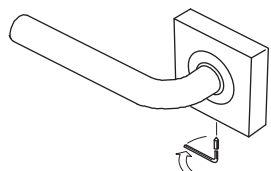
## FINAL ASSEMBLY

### For Round Rose Furniture

- Insert fixing screws through inner retainer rose.
- Mount furniture on door through lock or latch.
- Secure furniture by tightening fixing screws.
- Check screw length is correct. For 1220, 3220 & 1420 ensure screw does NOT protrude through outer

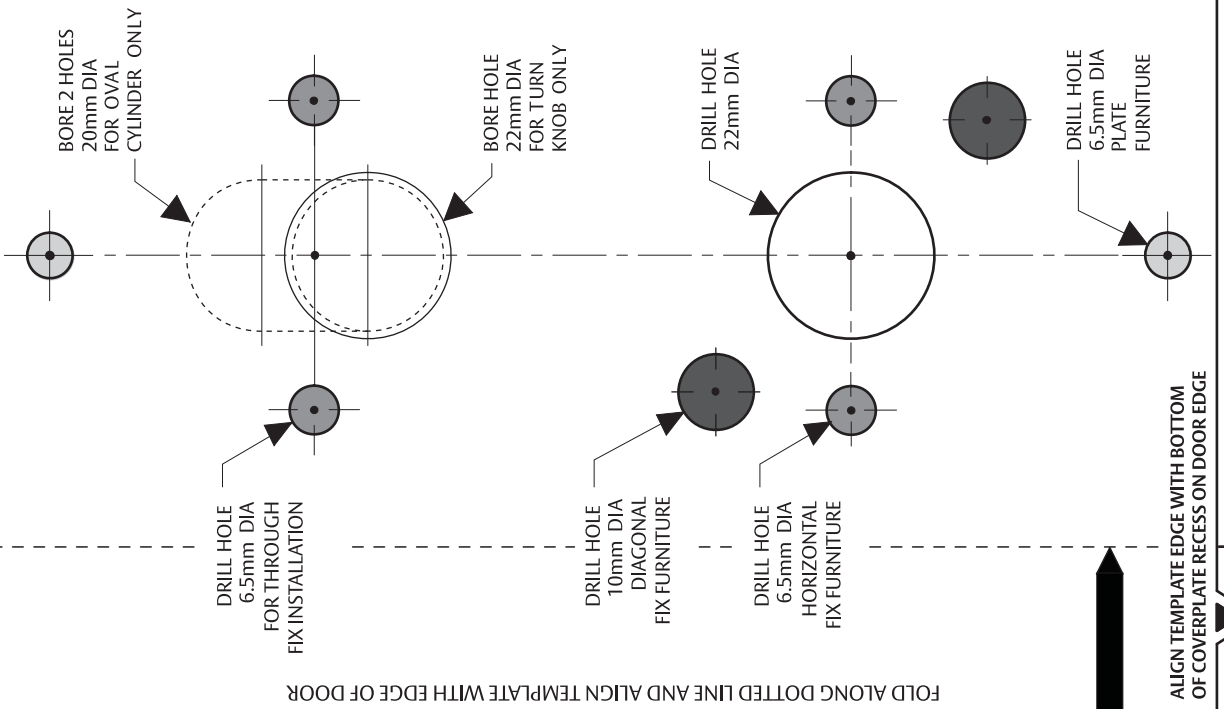
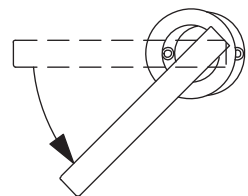
### For Square Rose Trim Furniture (1420 only)

- If required fix grub screw to outer square rose with allen key supplied.



### For Captive Rose Furniture (1220, 3220 & 1420 Only)

- For Captive Rose furniture levers, loosen and undo outer rose trim.
- Rotate lever 45° and position rose trim to allow clear access to fixing screw holes.
- Insert fixing screws.



TEAR HERE

TEAR HERE

FOLD ALONG DOTTED LINE AND ALIGN TEMPLATE WITH EDGE OF DOOR

FOLD ALONG DOTTED LINE AND ALIGN TEMPLATE WITH EDGE OF DOOR

ALIGN TEMPLATE EDGE WITH BOTTOM OF COVERPLATE RECESS ON DOOR EDGE

ALIGN TEMPLATE EDGE WITH BOTTOM OF COVERPLATE RECESS ON DOOR EDGE