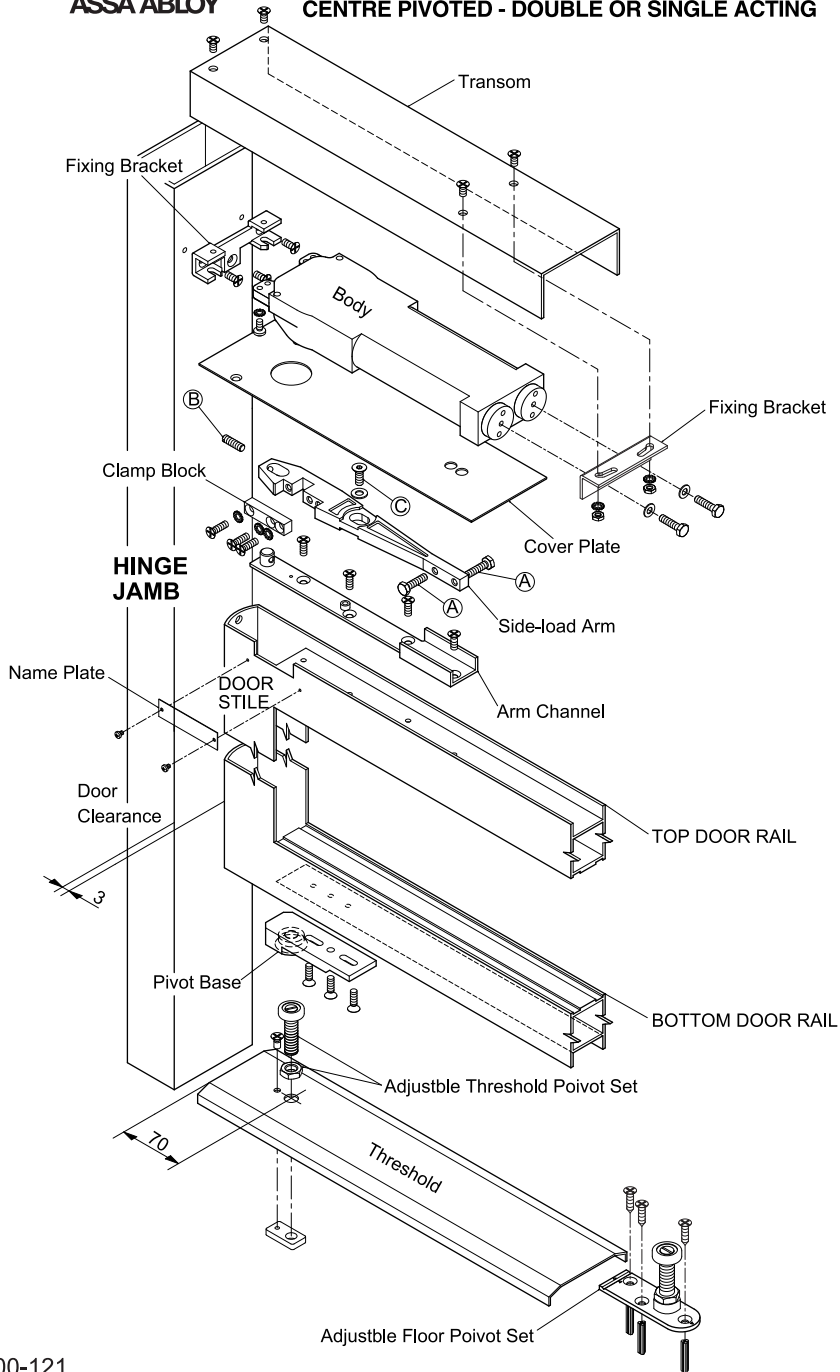


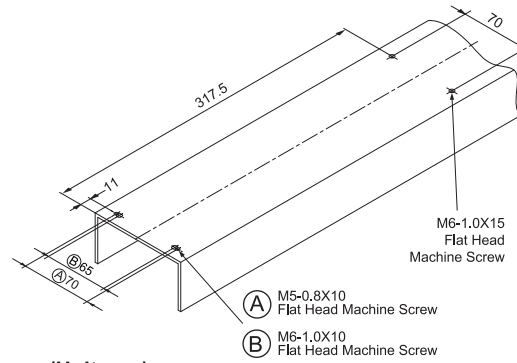


LOCKWOOD 9800 SERIES CONCEALED OVERHEAD DOOR CLOSER INSTALLATION INSTRUCTION CENTRE PIVOTED - DOUBLE OR SINGLE ACTING



DOOR HEADER

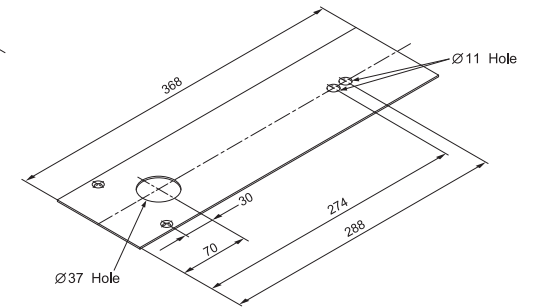
Drill and counter-sink outside top surface for M6-1.0X10 and M6-1.0X15 flat head screw as shown.



(Unit:mm)

COVER PLATE

Drill $\varnothing 37$ and $\varnothing 11$ holes as shown.



TOP DOOR RAIL (SIDE LOADING ARM)

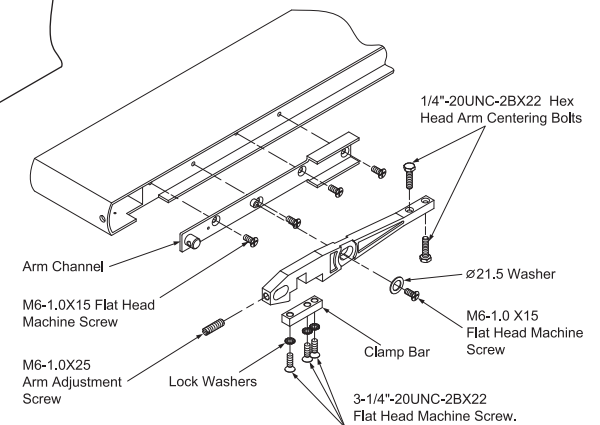
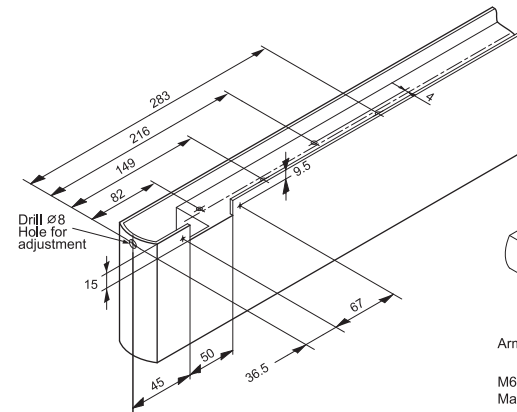
Drill or drill and tap holes in top of door as shown. Make 50X15 cut-cut in top of door as shown. Cut must be on the inside face of the door. After installation of door, attach cover plate with self-tapping screw as provided.

NOTE: Before attaching cover plate, make certain the socket head clamp bar cap screws are tightened securely.

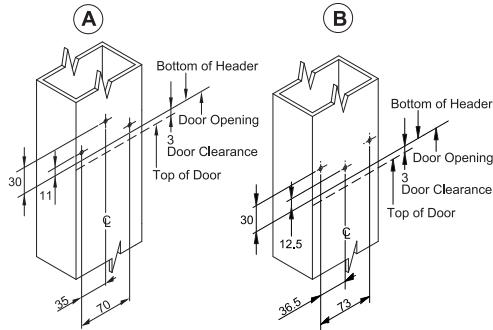
Fix arm channel with M6-1.0X15 flat head screws and install arm using M6-1.0X15 flat head machine screw and $\varnothing 21.5$ washer. Install M6-1.0X25 dome head arm adjustment screw. Laterally adjust center of the arm spindle retainer from outside edge of door (not including weatherstripping).

Center arm in the top rail by adjusting the three 1/4"-20UNC-2BX22 flat head machine screw centering bolts.

NOTE: After door is installed, the three 1/4"-20UNC-2BX22 head clamp bar cap screws must be tightened securely.



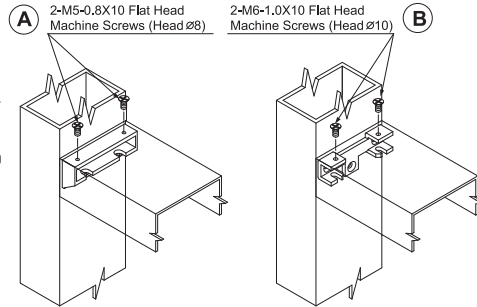
Drill holes for M6-1.0X10 pan head self-tapping screws as shown.



HINGE JAMB

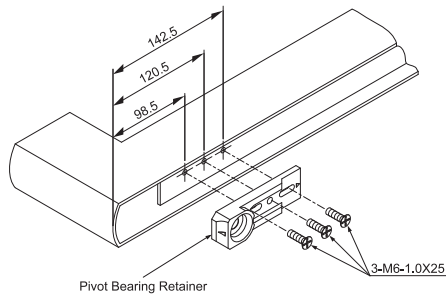
Install anchor using M6-1.0X10 pan head self-tapping screws.

Mount door header on anchor using M6-1.0X10 flat head machine screws (Head \varnothing 10).



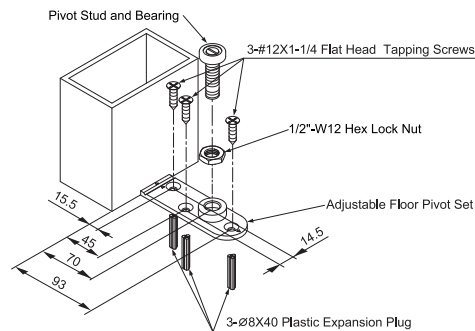
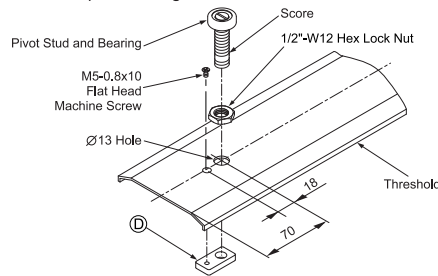
BOTTOM DOOR RAIL (SIDE LOADING)

Drill and tap for M6-1.0 holes in bottom rail of door as shown. Install pivot bearing retainer in bottom of door using three M6-1.0X25 fine head machine screws and lock washers. Laterally adjust center of pivot bearing retainer from outside edge of door (not including weatherstripping) and tighten screws firmly.



THRESHOLD MOUNT PIVOT

Drill hole in threshold as shown. Install pivot stud and bearing with 1/2"-W12 lock nut as shown and adjust bearing height for proper door clearance and firmly tighten lock nut. The \varnothing 6mm thick plate is held in position by the M5-0.8x10 countersunk screw and the pivot bolt can be installed. Determine the correct height of the pivot and tighten the lock nut.



FLOOR MOUNT PIVOT

Center pivot base against door jamb on hinge side. Mark and drill \varnothing 8 holes 40 deep in floor top plastic expansion plugs.

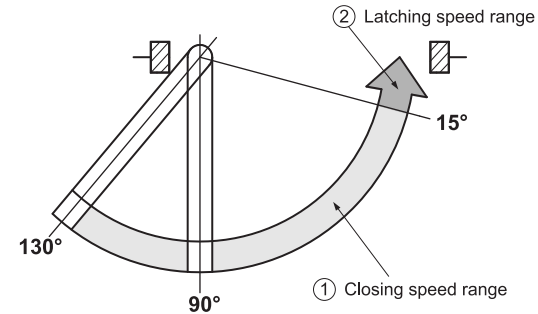
Mount base using \varnothing 8X40 plastic expansion plugs and #12X1-1/4 flat head tapping screws.

ATTENTION:

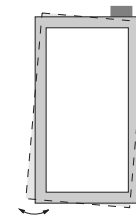
Floor mount pivot base should be fixed on completely flat floor surface. If floor surface is not flat, make it flat before fixing floor mount pivot base.

SPEED ADJUSTMENT

Turn adjustment screw ① for desired closing speed then turn adjustment screw ② to produce a suitable latching speed.



PARALLEL POSITION ADJUSTMENT DOOR

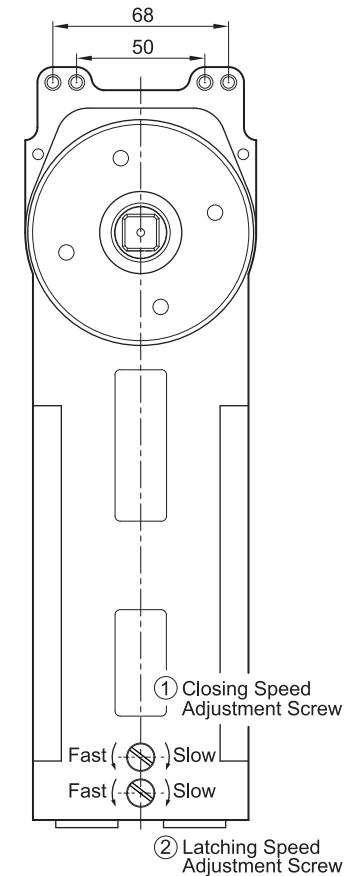


Clearance adjustable by screw \textcircled{B} after loosening screw \textcircled{C} .

CLOSED POSITION ADJUSTMENT DOOR



Closing position adjustable by screw \textcircled{A} after loosening screw \textcircled{C} .



ATTENTION

Opening the door wider than 90° (130°) capacity will seriously damage the closer.

A door stopper at the point of 90° (130°) is recommended to prevent the door from opening wider.

