

7) Mounting the Lock

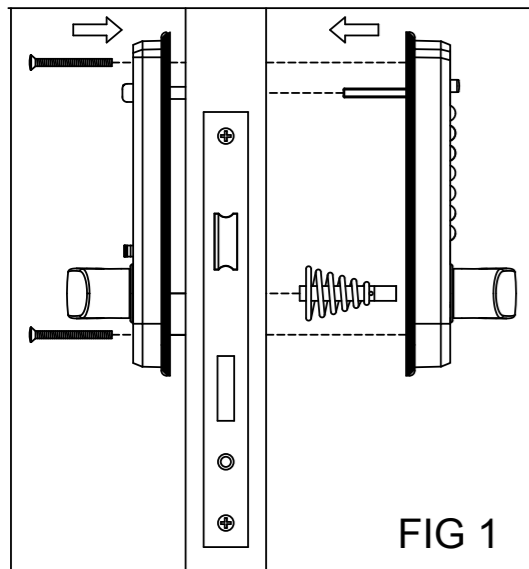
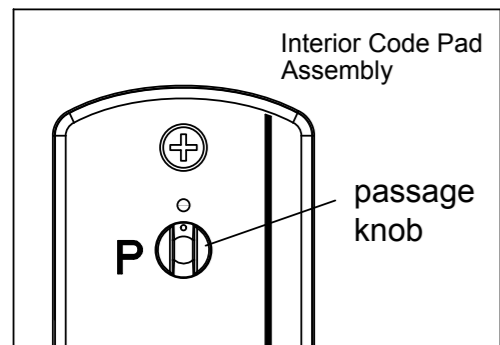


FIG 1

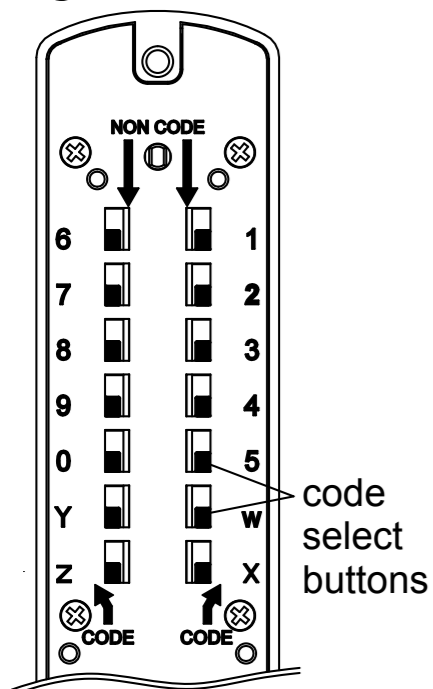
- Select the fixing screws to suit the door thickness.
- * Fit the neoprene seals to both the Exterior Code Pad and Interior Handle Assemblies.
 - * Hold the Exterior Code Pad Assembly onto the door with the spindle bar and spring in position and ensuring that the square bar engages the hub in the mortice lock assembly.
 - * Locate the Interior Handle Assembly on the inside of the door engaging the square spindle in the handle hub.
 - * Screw both side together using the fitting screws top and bottom. (FIG 1)
 - * Before tightening of fixing screws make sure the lock is vertical
 - * Test the mechanism to ensure that the lock functions correctly and moves easily.
- DO NOT overtighten the fixing screws-this may cause distortion and lead to poor operation.
NOTE: CHECK THAT THE CODE WORKS TO AVOID A LOCKOUT BEFORE CLOSING THE DOOR.

Digital Lock Set-Passage Mode Function



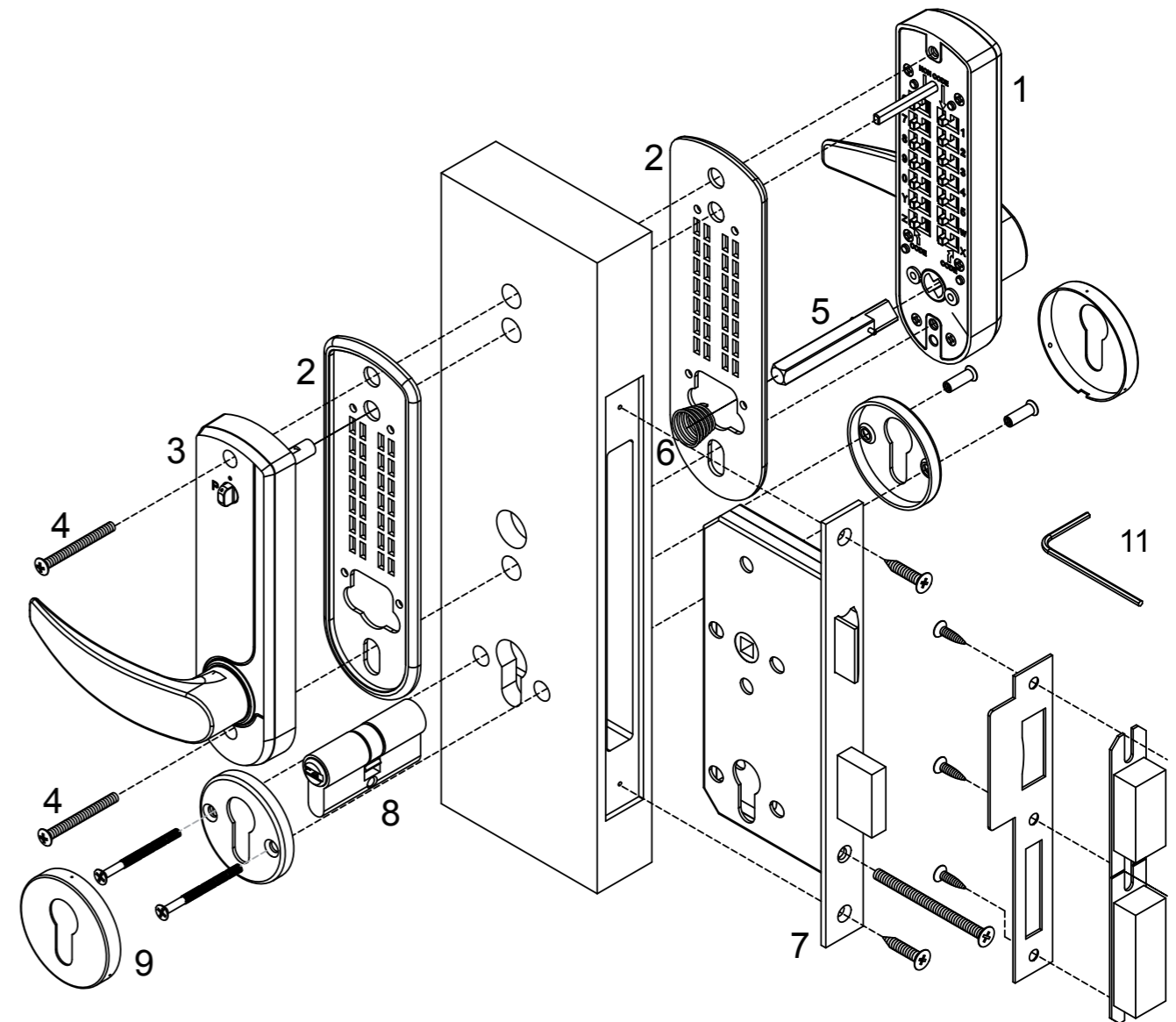
- * Enter correct code, turn the handle of Digital Exterior Code Pad Assembly to 4 o'clock position and hold the handle in downward position
- * Turn the passage knob of Digital Interior Code Pad Assembly from 12 o'clock to 9 o'clock "P" position. Release the handle and "Passage Mode is now set to give free access without the need to enter the code."
- * To cancel pull down outside handle and turn the passage knob back to the 12 o'clock position.

Digital Lock Set-Changing the Code Number



- 1) The digital lock is supplied with factory setcodes: C13579
 - 2) Depress the code select button and slide the selector from "NON CODE" to "CODE" position and the active number is selected as shown by the RED indicator.
 - 3) Any numbers not required to be part of the active code should have the code selectors parked in the "NON CODE" position.
 - 4) The "CLEAR" button MUST always be used as the first digit of a code.
 - 5) For best security the code number selected should contain 4 or 5 digits.
 - 6) Check that the new code works before installation.
- NOTE: THE CODE IS NON-SEQUENTIAL
MAY BE ENTERED IN ANY ORDER

Components



- | | |
|--|---|
| 1. Digital Exterior Code Pad Assembly | 7. Mortice Lock - 60mm Backset with Strike Plate, Fixing Screws x 5, Cylinder Retaining Screw x 1 |
| 2. Neoprene Seals x 2 | 8. Euro Profile Cylinder with 2 Keys |
| 3. Digital Interior Code Pad Assembly | 9. Cylinder Escutcheons |
| 4. Fixing Screws x 2 - 60mm | 10. Instructions & Template |
| 5. 8mm Square Spindle (Drive Bar) x 78mm | 11. Allen key |
| 6. Spindle Spring | |

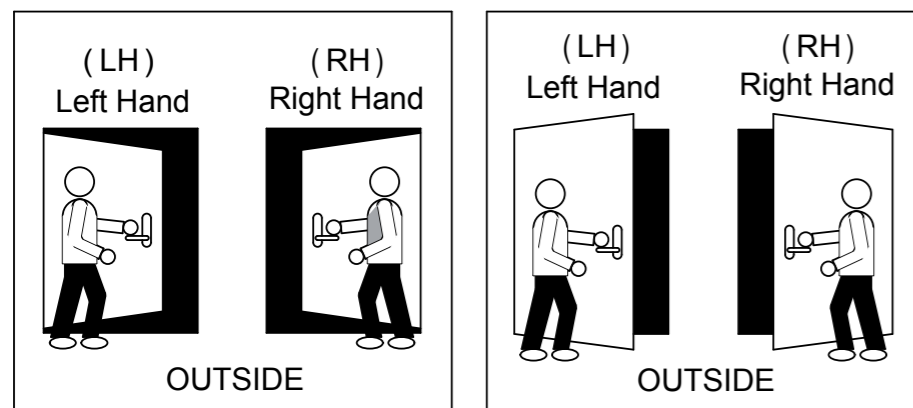
SPECIAL NOTES:

Before commencing installation check that all parts are working correctly.

* Digital Exterior Code Pad Assembly: Enter code C13579, turn handle in both directions. The handle should turn and return freely under spring pressure.

If you need to change the code you should change and test prior to fitting. - see the Code Change instructions

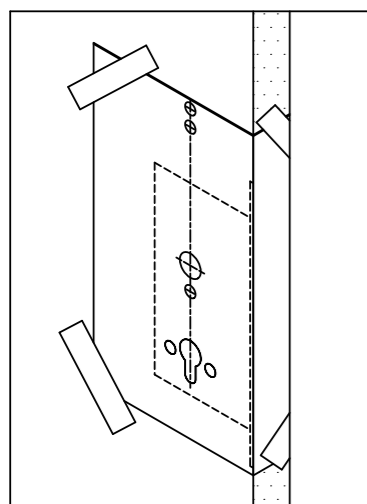
1) Check the Handing of Your Door



Viewed from the OUTSIDE (Code Pad Side), your door is right handed if the hinges are on the right and your door is left handed if the hinges are on the left.

NOTE: ALL UNITS ARE SET AT THE FACTORY TO SUIT RIGHT HAND HUNG DOORS.

2) Preparing the Door



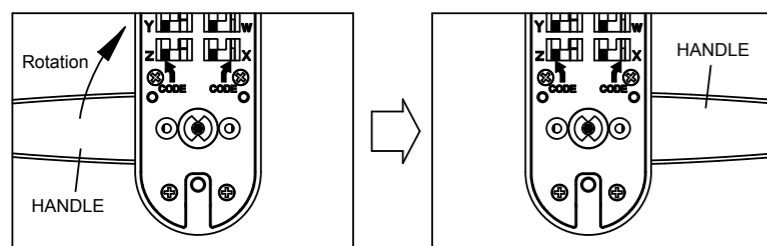
Establish the height that the lock is to be mounted on door and mortice out for the lock body as detailed on the template.

Fold template and tape to the face of the door aligning the centre line of latch hub with the mortice lock latch hub.

With the lock body removed, drill mounting screw, cylinder and escutcheon holes as shown.

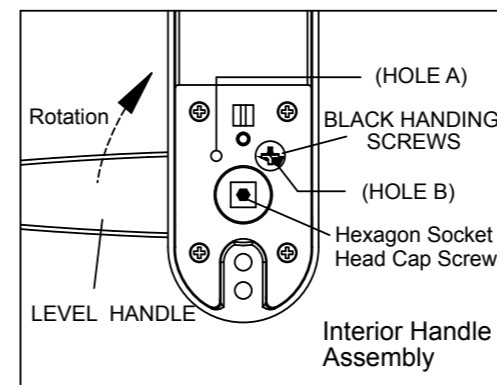
NOTE: TO PREVENT DAMAGE TO THE DOOR FACE FROM DRILL BREAKTHROUGH, MARK BOTH SIDES OF DOOR & DRILL HOLES HALF WAY THROUGH FROM EACH SIDE

3) Handing the Digital Exterior Code Pad Assembly



The external key pad handle is fitted with a clutch to prevent damage from attempted forced entry. To change the handing first mount the keypad to the door as per instruction 6) then apply force to rotate the handle to the correct handing.

4) Handing the Digital Interior Handle Assembly

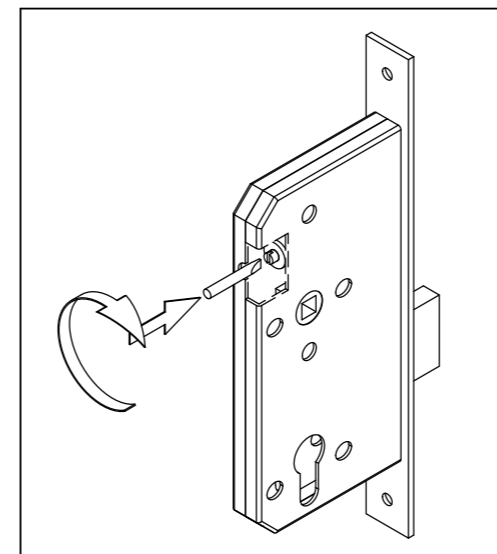


Hole A is for left hand door and Hole B for right hand door. Handing is for a right hand door with black factory handing screw located in Hole B.

To change factory handing to suit left hand door:

- * Remove BLACK handling screw from hole A and relocate it in hole B.
- * Loosen the Hexagon Socket Head Cap Screw located inside the spindle hub and rotate the lever handle from right to left.
- * Tightening the Hexagon Socket Head Cap Screw making sure the lever handle is in the horizontal position and the handle hub aligns with the mortice lock spindle hub.

5) Handing and Fitting the Mortice Lock



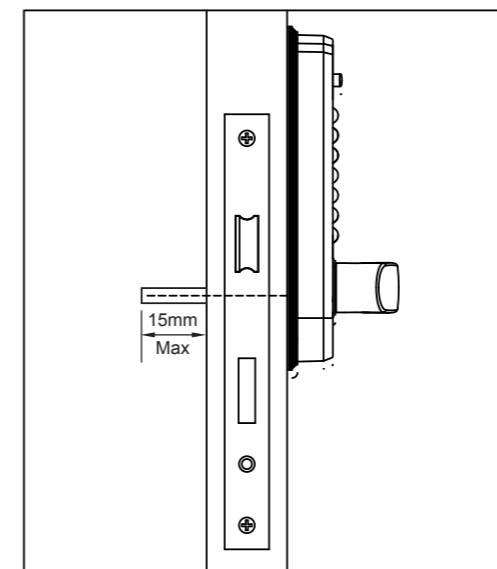
Handing the Latch Bolt

- * Insert a flat blade screwdriver through the back of the lock case and press on the latch handing screw until the latch bolt is clear of the face plate.
- * Then turn the screw 180 degrees to achieve required handing.
- * Fit the lock into the mortice ensuring that the lock face plate is flush with the edge of the door and screw into place

Fitting the Strike

- * Close the door against the door frame and transfer the centre of the latch bolt onto the jamb.
- * Position the strike plate on the door so that it fits against the flat of the latch bolt
- * Close the door and mark the position of the strike plate on the door jamb
- * Use the strike plate as a template and mark the inner & outer edges on the jamb
- * Cut a 1mm deep rebate so that the strike is flush with the door jamb
- * Drill and chisel out hole to accommodate latch and deadbolt
- * Fit strike using only the central screw at first to ensure that it is positioned correctly

6) Spindle Length



Spindle Length

- * Maximum spindle projection on inside of door is 15mm.
- * Trim spindle length to suit door thickness.