

RP124



The RP124 is the Delta Seal Plus™, a rigid and flexible co-polymer acoustic smoke seal with multiple fins and quick and easy self adhesive installation. The RP124 is located in the protected corners of rebated timber or steel frame doors and is suitable for new and retrofit applications.

Can be used in conjunction with Raven door bottom seals and astragals and threshold plates.

Location: Around rebated frames of single and double butt hinged doors.

Min/Max Gap: 3mm to 5.5mm.

Fixing: Aggressive self adhesive backing tape on both sides of the carrier.

Note: Contact surface must be clean, smooth and if painted, well cured. Self adhesive seals will not adhere to oiled or alkyd finishes or to easy clean wash and wear paint surfaces.

Seal: Black co-extruded rigid and flexible flame retardant PVC.

Sizes: Available in door set sizes.

Approvals

UL Cert. GVI.R37913.

Acoustic AUS/NZ: NCC Spec. F5.5.
UK/EU: Approved Document E. Rated to BS EN ISO 717.1.

Fire AUS/NZ: NCC Spec. C3.4.
AS1530.4 & AS/NZS 1905.1. NZ BC Compliance Doc. C/AS1 6.19.2 & App. C6.1.1.

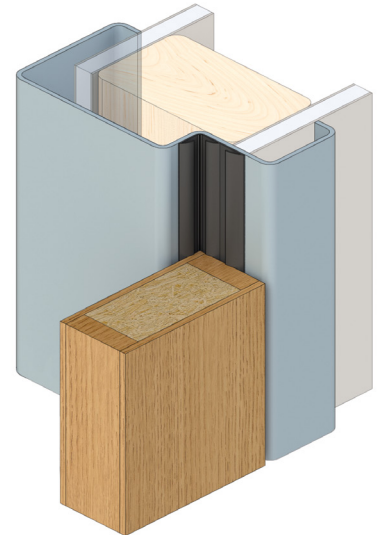
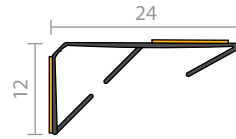
UK/EU: Approved Document B.
BS 476 Pt. 20 & 22 (similar to BS EN 1634-1).

FRL & FRR-120/30 and FD120. 🔥

Smoke NCC Spec. C3.4. AS1530.7 & BS EN 1634-3. Meets smoke leakage rates specified in AS6905 & EN 13501-2 "Sa", "Sm".

Energy NCC Pt. 3.12.3.3 & J3.4.

Registered Design.



RP130Si



A heavy duty medium temperature smoke seal designed to be fitted to the door head & jamb reveal of pivot door frames. May also be installed to the door stile edges and to one leaf of plain meeting stiles of timber double pivot doors. The aluminium body of the seal can be checked out or drilled to accommodate pivot hardware and latch ware at the meeting stile.

Location: Around frames of single and double acting pivot doors and the stiles of timber doors.

Min/Max Gap: 14mm to 18mm.

Finish: Satin clear (silver) anodised aluminium (15µm) or paint at extra cost (page 7).

Fixing: Screw fix. Zinc plated, cross recess head S.T. screws and cover strip supplied.

Seal: RP3129Si. Fins: Light grey silicon rubber (SE). Cover strip: Light grey PVC.

Sizes: Available in door set sizes or stock lengths.

Approvals

Fire Gasket flammability index 1 when tested to AS1530.2.

Smoke NCC Spec. C3.4. AS1530.7 & BS EN 1634-3. Meets smoke leakage rates specified in AS6905 & EN 13501-2 "Sa", "Sm".

Energy NCC Pt. 3.12.3.3 & J3.4.

Registered Design.

