

RP24Si



RP24Si is an effective door stop seal for noise, light and smoke. It can be butt jointed for a neatly finished continuous seal, replacing the conventional doorstop on metal or timber framed doors. With tamper proof concealed fixings, the RP24Si utilises independently adjustable screws to achieve up to 8mm sealing adjustment for maximum noise control. The silicon rubber seal only requires normal door closing force.

Note: If fixing to rebated frames of single doors, specify a long backset door latch.

Location: Head and jambs of single and double butt hinged doors.

Min/Max Gap: 0mm to 8mm.

Finish: Satin clear (silver), bronze, black anodised aluminium (15µm) or paint at extra cost (page 7).

Fixing: Screw fix. Zinc plated, cross recess head S.T. screws and cover strip supplied.

Seal: RP338Si. Grey silicon rubber (SE).

Sizes: Available in door set sizes or stock lengths.

Approvals

UL Cert. GVI1.R37913.

Acoustic AUS/NZ: NCC Spec. F5.5.
UK/EU: Approved Document E. Rated to BS EN ISO 717.1.

Fire AUS/NZ: NCC Spec. C3.4. NZ BC Compliance Doc. C/AS1 6.19.2 & App. C6.1.1.

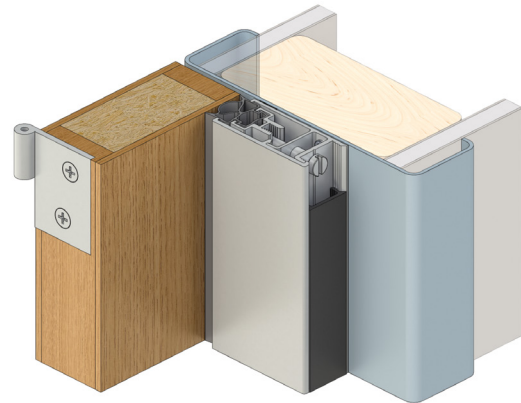
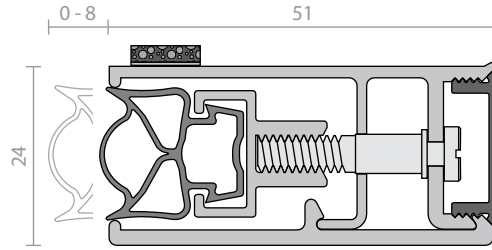
UK/EU: Approved Document B. BS EN 1634-1.

FRL & FRR-/240/60 and FD240. 🔥

To be used on door frames with a 25mm stop. Gasket flammability index 1 when tested to AS1530.2.

Smoke NCC Spec. C3.4. AS1530.7 & BS EN 1634-3. Meets smoke leakage rates specified in AS6905 & EN 13501-2 "Sa", "Sm".

Energy NCC Pt. 3.12.3.3 & J3.4.



RP39



A refrigeration type vinyl magnetic strip in an anodised aluminium housing. RP39 provides a tight seal for steel clad doors and jambs and may be used as a stop. For timber doors, a thin steel strip can be attached to the door face. The magnetic strip has sufficient closing strength that latches may not be required. It can also be used in pairs on meeting stiles of timber doors.

Note: As an astragal seal, RP39 is best suited to infrequent use and door closer hold open applications.

Location: Head, jambs and stiles of single and double butt hinged doors, sliding doors or bulkhead applications.

Min/Max Gap: 4mm to 8mm (meeting stiles).

Finish: Satin clear (silver) anodised aluminium (15µm) or paint at extra cost (page 7).

Fixing: Screw fix. Zinc plated, cross recess head S.T. screws supplied. Fixing holes are slotted.

Seal: Black PVC.

Sizes: Available in stock lengths.

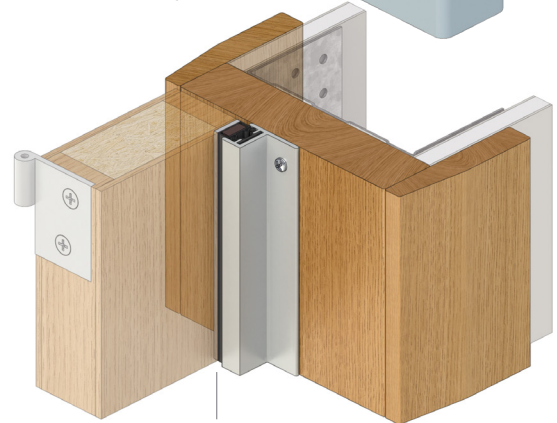
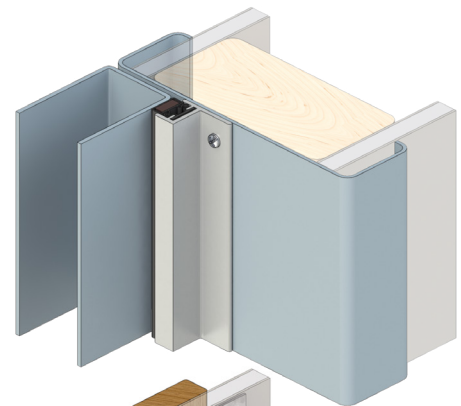
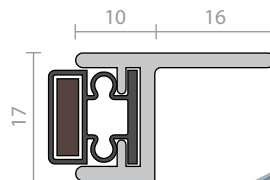
Approvals

Fire AUS/NZ: NCC Spec. C3.4. AS1530.4 & AS/NZS 1905.1. NZ BC Compliance Doc C/AS1 6.19.2(a) and App C6.1.1.

UK/EU: Approved Document B. BS 426 Pt. 20 & 22 (similar to BS EN 1634.1).

FRL & FRR-/240/30 and FD240. 🔥

Energy NCC Pt. 3.12.3.3 & J3.4.



Timber door with steel insert (by others)