

RP17b



Co-extrusion (Adhesive backed).

A co-extruded PVC sweep seal that fits to the stiles or bottom of doors. These extremely flexible seals can be quick and easily installed without removing the door. Ideal for sliding and security screen doors.

Can be used in conjunction with Raven RP13 and RP82 threshold plates.

Location: Bottom of or around sliding or outward opening butt hinged doors.

Min/Max Gap: Up to 19mm (user determined).

Fixing: Self adhesive or can be screw fixed.

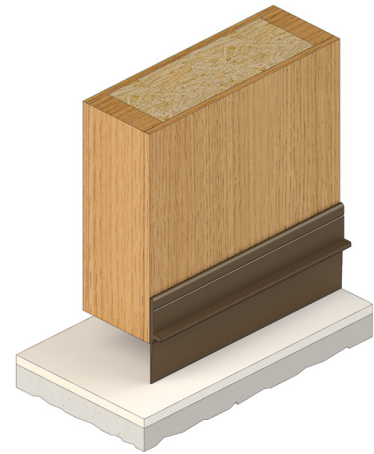
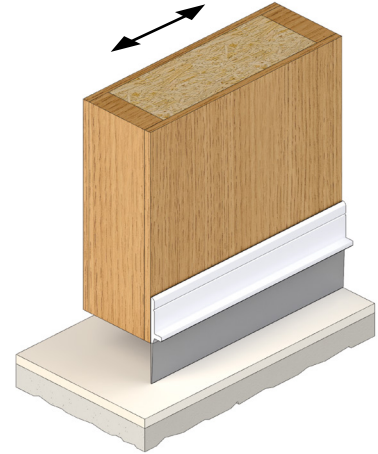
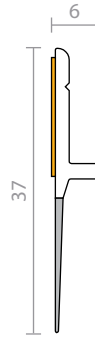
Note: Contact surface must be clean, smooth and if painted, well cured. Self adhesive seals will not adhere to oiled or alkyd finishes or to easy clean wash and wear paint surfaces.

Seal: White and grey or brown rigid and flexible PVC.

Sizes: Available in stock lengths.

Approvals

Energy NCC Pt. 3.12.3.3 & J3.4.



RP26



A heavy duty sweep seal for door bottoms of outward opening doors. Slotted fixing holes allow for adjustment all concealed behind a push in cover strip.

The RP26 is ideal for use in conjunction with Raven threshold plates.

Location: Bottom of single and double, outward opening, butt hinged doors, tilt up doors or can be used as an astragal seal.

Min/Max Gap: 5mm to 20mm (user determined).

Finish: Satin clear (silver), bronze anodised aluminium (15µm) or paint at extra cost (page 7).

Fixing: Concealed screw fix. Zinc plated, cross recess head S.T. screws and cover strip supplied. Fixing holes are pre-slotted.

Seal: RP326. Black EPDM.

Sizes: Available in stock lengths.

Approvals

Fire AUS/NZ: NCC Spec. C3.4. AS1530.4 & AS/NZS 1905.1.

UK/EU: Approved Document B. BS 476 Pt. 20 & 22 (similar to BS EN 1634-1).

FRL & FRR-120/30 and FD120.

Energy NCC Pt. 3.12.3.3 & J3.4.

