

## RP87HSi



Designed for clean room and health care facilities, the RP87HSi has an easy wipe clean design where the smooth silicon sealing gasket also contains an antimicrobial additive for maximum protection against surface bacteria.

RP87HSi is an effective door stop seal for noise, light and medium temperature smoke. It can be butt jointed for a neatly finished continuous seal, replacing the conventional doorstop on metal or timber framed doors. With tamper proof concealed fixings, the RP87HSi utilises independently adjustable screws to achieve up to 6mm sealing adjustment for maximum noise control. The silicon seal only requires normal door closing force.

*Note: If fixing to rebated frames of single doors, specify a long backset door latch.*

**Location:** Head and jambs of single and double butt hinged doors.

**Min/Max Gap:** 0mm to 6mm.

**Finish:** Satin clear (silver) anodised aluminium (15µm) or paint at extra cost (page 7).

**Fixing:** Concealed screw fix. Zinc plated, cross recess head S.T. screws and cover strip supplied.

**Seal:** RP384Si. Black silicon rubber (SE).

**Sizes:** Available in door set sizes.

### Approvals

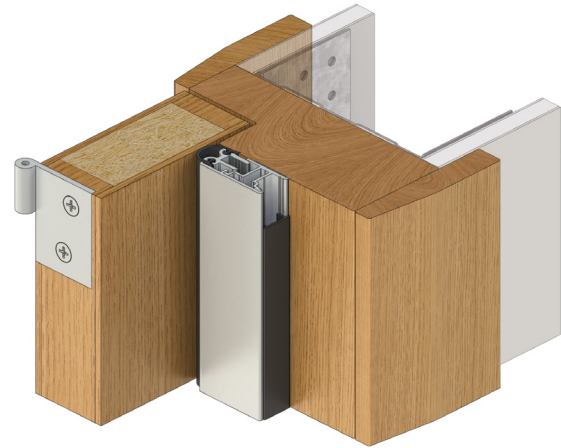
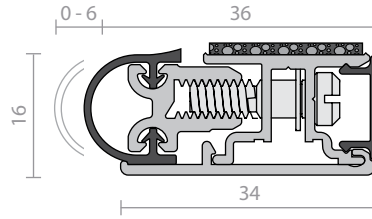
**Acoustic AUS/NZ:** NCC Spec. F5.5.  
**UK/EU:** Approved Document E. Rated to BS EN ISO 717.1.

**Fire AUS/NZ:** NCC Spec. C3.4.  
AS1530.4 & AS/NZS 1905.1. NZ BC Compliance Doc. C/AS1 6.19.2 & App. C6.1.1.

**UK/EU:** Approved Document B.  
**FRL & FRR-/240/30 and FD240.** 🔥  
Gasket flammability index 1 when tested to AS1530.2.

**Smoke** NCC Spec. C3.4. AS1530.7 & BS EN 1634-3. Meets smoke leakage rates specified in AS6905 & EN 13501-2 "Sa", "Sm".

**Energy** NCC Pt. 3.12.3.3 & J3.4.



## RP93Si



A weather and acoustic seal suitable for plain or rebated frames. RP93Si is quick and easy to install (mitre joint only) to the head and jambs without removing the door. Slotted for installation adjustment, the soft silicon bulb accommodates a tighter seal and, with a tamper proof cover strip, provides a fit and forget feature.

*Note: If fixing to rebated frames of single doors, specify a long backset door latch. The tamper proof aluminium cover strip is not recommended for removal once installed. Refer to RP10Si or RP78Si for this feature.*

**Location:** Head and jambs of single and double butt hinged doors.

**Min/Max Gap:** 0mm to 6mm.

**Finish:** Satin clear (silver) anodised aluminium (15µm) or paint at extra cost (cover strip only).

**Fixing:** Screw fix. Zinc plated, cross recess head S.T. screws and cover strip supplied.

**Seal:** RP393Si. Black silicon rubber (SE).

**Sizes:** Available in door set sizes or stock lengths.

### Approvals

UL Cert. GVI1.R37913.

**Acoustic AUS/NZ:** NCC Spec. F5.5.  
**UK/EU:** Approved Document E. Rated to BS EN ISO 717.1.

**Fire AUS/NZ:** NCC Spec. C3.4.  
AS1530.4 & AS/NZS 1905.1. NZ BC Compliance Doc. C/AS1 6.19.2 & App. C6.1.1.

**UK/EU:** Approved Document B.  
BS 476 Pt. 20 & 22 (similar to BS EN 1634-1).

**FRL & FRR-/240/30 and FD240.** 🔥  
Gasket flammability index 1 when tested to AS1530.2.

**Smoke** NCC Spec. C3.4. AS1530.7 & BS EN 1634-3. Meets smoke leakage rates specified in AS6905 & EN 13501-2 "Sa", "Sm".

**Energy** NCC Pt. 3.12.3.3 & J3.4.

