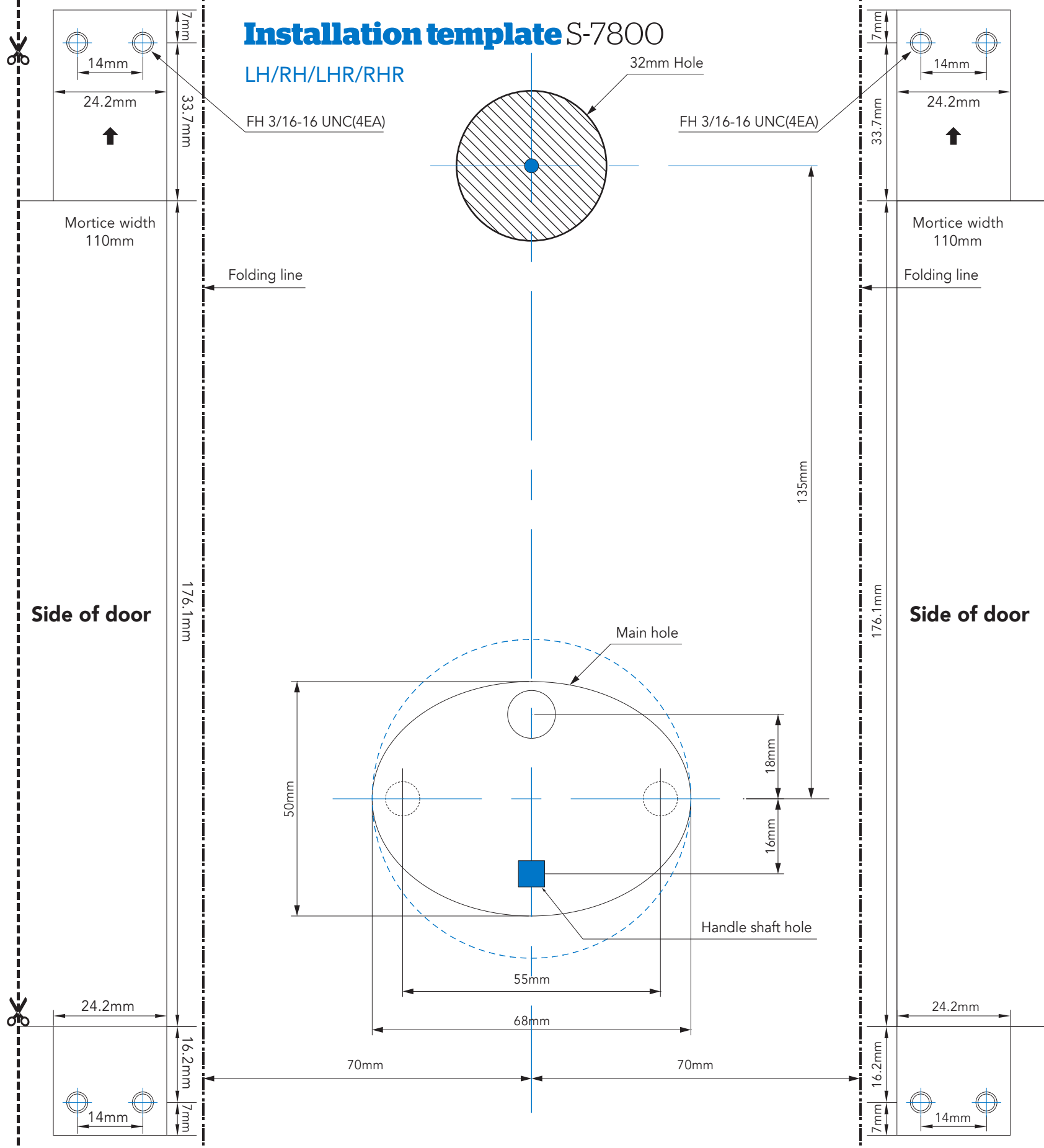
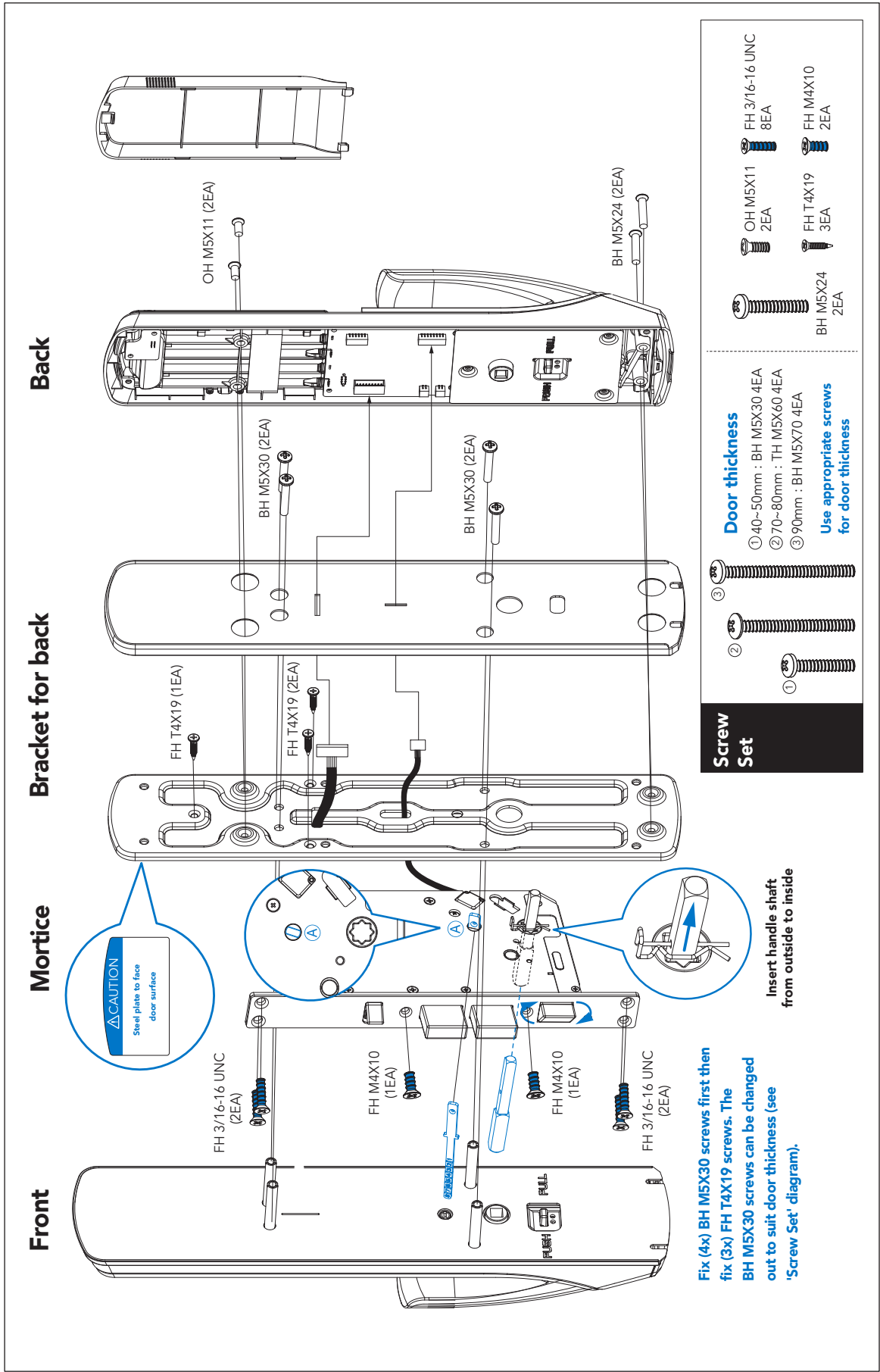


Installation - exploded view S-7800

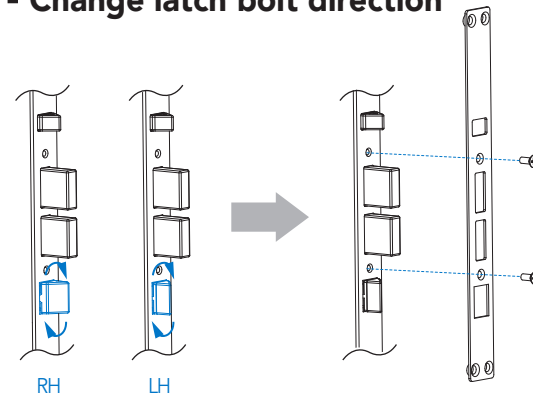


How to install - step 1

⚠ Notice

- Installation method for left handed and right handed doors is the same
- Before installation, adjust the direction of latch bolt and striker as per door opening direction

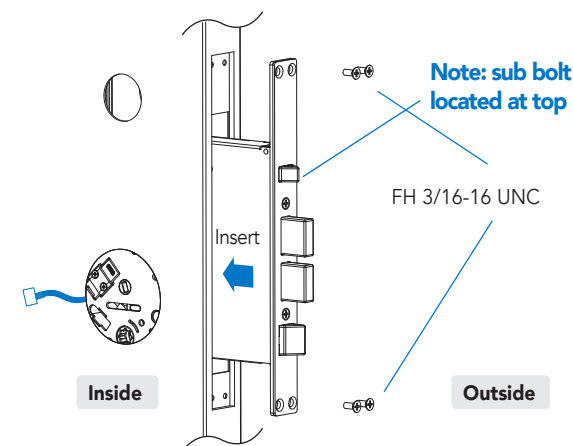
▪ Change latch bolt direction



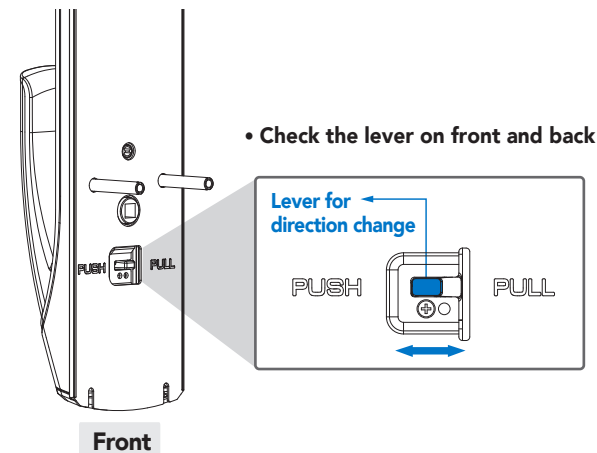
1. Rotate latch bolt
2. Confirm the direction of latch bolt and fix the plate using FH M4X10

▪ Install mortice

1. Insert mortice to side of door and pull cable inside
2. Fix the plate using (4x) FH 3/16-16 UNC

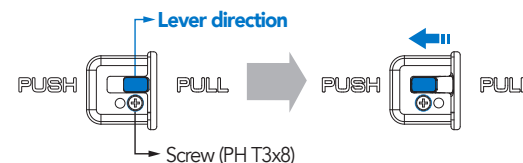


▪ Change push-pull direction



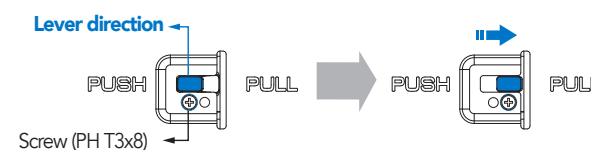
1. Pull → push direction change (front)

- ① Remove screw (PH T3X8)
- ② Move the lever towards desired direction
- ③ Fix the screw into hole below the lever



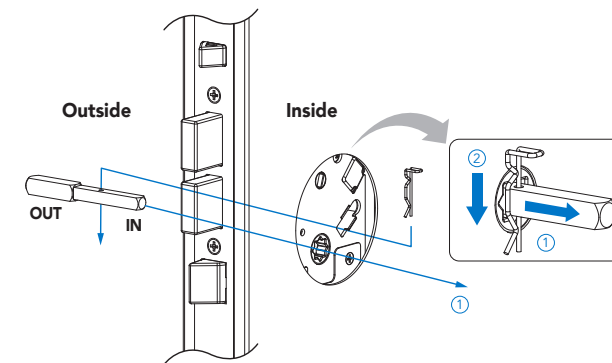
2. Push → pull direction change (back)

- ① Remove screw (PH T3X8)
- ② Move the lever towards desired direction
- ③ Fix the screw into hole below the lever

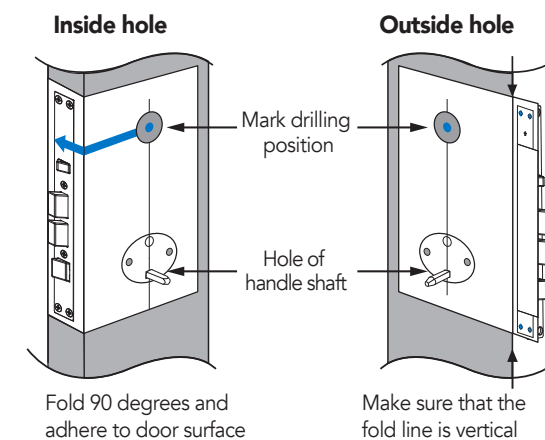


How to install - step 2

1. Insert handle shaft from outside to inside through the hole and fix stop ring on inside of handle shaft

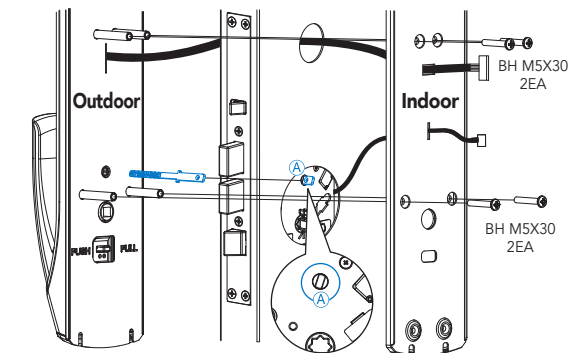


2. Insert handle shaft into rectangular "handle shaft hole" on installation template and adhere the template to the inside. Fold the template along the folding line.
3. Fix the position of the template precisely and mark the drilling position for holes. Change direction of template and mark the drilling position on opposite side in same way.



4. Drill hole as per specification (Ø32mm).
5. Select push/pull direction before installation (refer to instruction of 'change push/pull direction').
6. Pull cable from the front of device through 32mm hole to inside of door, then through horizontal hole on the bracket.
7. Pull the mortice lock cable through the vertical hole on the bracket.

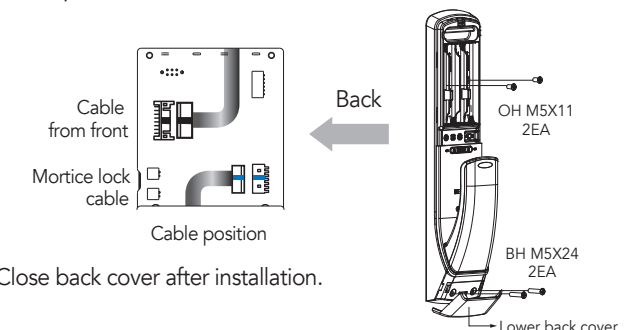
7. Refer to the table below and cut the key tail plate to the appropriate length. Confirm the cable is not jammed and fix the front and back (BH M5X30, 4EA).



Door thickness	Key tail plate	Door thickness	Key tail plate
40 mm	1	90 mm	6
50 mm	2	100 mm	7
60 mm	3	110 mm	8
70 mm	4	120 mm	9
80 mm	5		

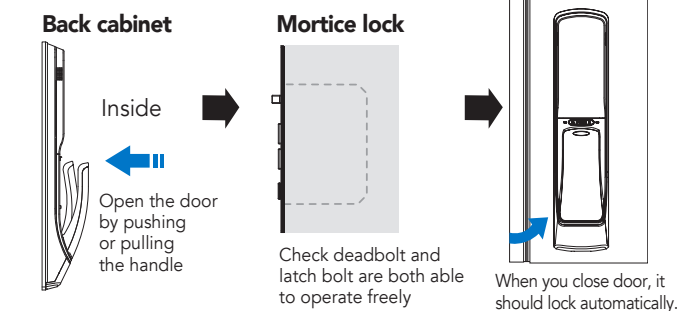
Note: Insert key shaft to hole A

8. Connect two cables to back. Open lower back cover and fix using screws (upper - OH M5X11, 2EA / lower - BH M5X24, 2EA).



9. Close back cover after installation.

✓ Check operation of the lock



✓ After installation

- ✓ Insert batteries correctly and do an open/close test from inside
 - ✓ Register user PIN code as per instructions in the user manual
- Factory setting : normal mode user PIN is: ①②③④⑤⑥