



# ARCHITECTURAL DOOR HARDWARE

---

2019/20

[www.sylvan.co.nz](http://www.sylvan.co.nz)

# ARCHITECTURAL DOOR HARDWARE

2019/2020

## ABOUT GD RUTTER

G D Rutter Ltd was founded in 1930 by George Daniel Rutter, as an importing agent specialising in builder's hardware. Three generations and 90 years later G D Rutter Ltd has grown to be one of New Zealand's leading suppliers of door and cabinet hardware to the hardware trade under the Sylvan brand name.

Throughout the 90 years of business there has always been a strong family influence with the emphasis on customer satisfaction and product quality. Now G D Rutter Ltd is managed by the 3 grandsons of George Daniel, who have grown up with hardware products and being involved in the business from a very young age. This early involvement in hardware products has ensured that the leadership of G D Rutter Ltd has strong product and technical knowledge together with superior customer service, these qualities set our company apart from many other hardware suppliers in New Zealand.

Designing and sourcing products that suit your environment is a key aspect of the Sylvan brand. Our design and engineering team puts a great deal of effort into ensuring the products we supply meet New Zealand's building standards and their intended purpose.

Our range of hardware products are available from all leading hardware stores, throughout New Zealand. Don't hesitate to contact us if you have any queries regarding any product within the Sylvan range.

**GDRutter**  
Limited



## CONTENTS

4-5	Entrance Pull Handles
6-9	Entrance Kits
9	Grip Sets
10-15	Lever Handle Furniture
16	Escutcheons
18	Privacy Turns
20-22	Lever Handle Sets
24	Deadbolts
25-26	Knobsets
27	Door Knobs
28-29	Mortice Locks
30	Latches, Bolts
31	Striker Plates, Spindles, Installation Tools, French Door Kit
32	Cylinders
33-35	Door Stops
37	Cavity sliders
36	Flush Pulls
38	Adapter Plates, Flush Bolt, Night Latch
39	Door Guard, Magnetic Catch, Signs
40	Banister Brackets
41	Lever Furniture Aluminium Doors
42	ISEO Panic Exit Devices
43	ISEO Smart Cylinders
44	ISEO 3 Point Locking
45	ISEO Mortice Locks
46	ISEO Striker Plates
47	ISEO Midrail Locks, ISEO Gate Lock
48	ISEO Cylinders
49	ISEO Door Closers
50-51	Index & Notes

### CARING FOR THE FINISH OF YOUR PRODUCT:

- The plated finishes of polished brass, gold, black, black nickel plate, are all classified as soft finishes.
- It is essential that no cleaning products are sprayed onto items that have a black finish as cleaning products will damage the finish.
- Polished Brass and Stainless steel Sylvan products do require a little bit of TLC from the homeowner, to ensure the finish remains in it's purchased condition. Sea salt, dust, oil from hands and environmental conditions can cause specs or discolouration to the surface. It is essential that these surfaces are cleaned regularly (every 3 months) with a soft cloth and mild soapy water. Or for Stainless steel products use a stainless steel cleaner and lanolin to protect its surface
- Sometimes over time installed items will work themselves loose, it is essential that when you see any back plate or screw becoming loose that you tighten them up. To tighten always turn in a clockwise motion. If your hardware is not kept secure it can put pressure on the set and cause internal damage, this is especially important for door knobs and handles.

[www.sylvan.co.nz](http://www.sylvan.co.nz)

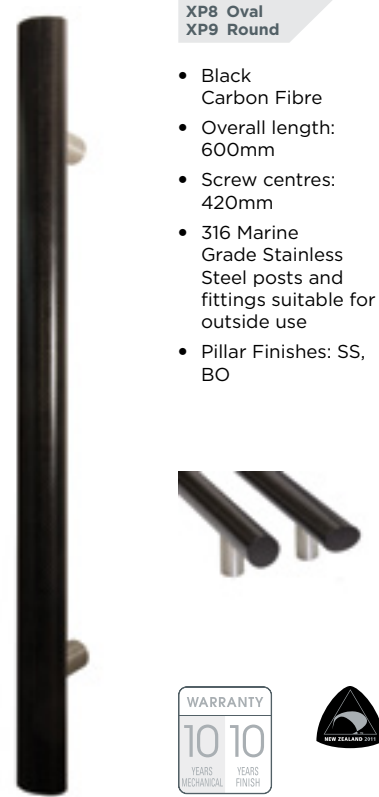


## EXPRESSION DOOR PULLS


Sylvan pull handles

**XP8 Oval  
XP9 Round**

- Black Carbon Fibre
- Overall length: 600mm
- Screw centres: 420mm
- 316 Marine Grade Stainless Steel posts and fittings suitable for outside use
- Pillar Finishes: SS, BO

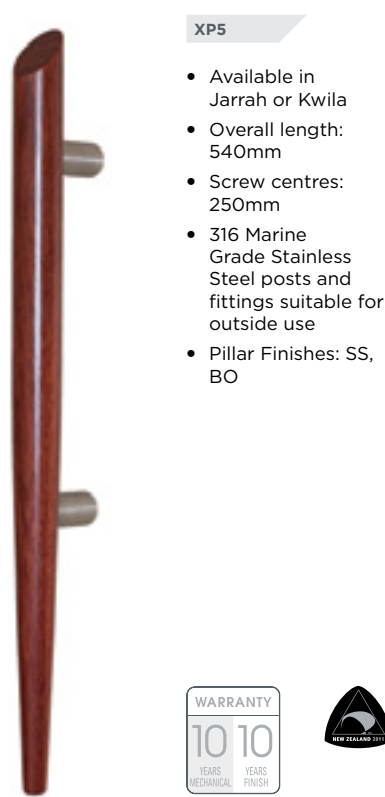


WARRANTY 10 YEARS MECHANICAL 10 YEARS FINISH




**XP5**

- Available in Jarrah or Kwila
- Overall length: 540mm
- Screw centres: 250mm
- 316 Marine Grade Stainless Steel posts and fittings suitable for outside use
- Pillar Finishes: SS, BO

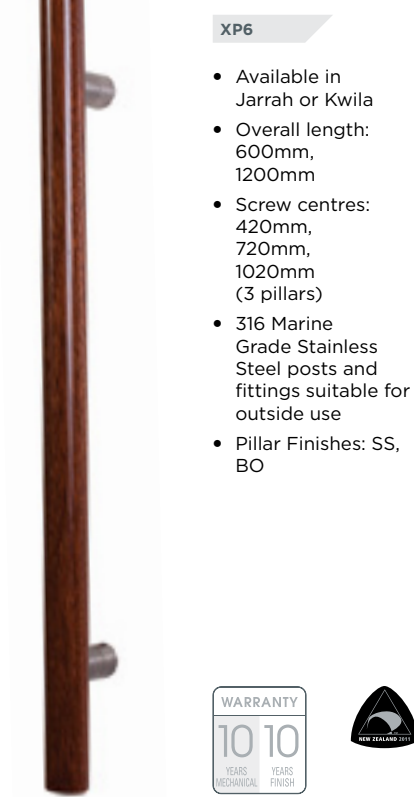


WARRANTY 10 YEARS MECHANICAL 10 YEARS FINISH




**XP6**

- Available in Jarrah or Kwila
- Overall length: 600mm, 1200mm
- Screw centres: 420mm, 720mm, 1020mm (3 pillars)
- 316 Marine Grade Stainless Steel posts and fittings suitable for outside use
- Pillar Finishes: SS, BO



WARRANTY 10 YEARS MECHANICAL 10 YEARS FINISH



## DOOR KNOCKER

Heavy Die-Cast

**DK1**

Heavy die-cast door knocker

- Diameter: 103mm
- Concealed external screw fixing
- Finish: SCP



**NEW**

**DP7**

- Offset rectangular tube pull
- Profile: 40mm x 20mm
- Overall length: 600mm
- Screw centres: 580mm
- Finish: 316 Grade BSS

*High quality Stainless Steel fittings, including grub-screws*

WARRANTY 10 YEARS MECHANICAL 10 YEARS FINISH



## STAINLESS STEEL PULL HANDLES


Sylvan pull handles

**DP1**

- Diameter: 32mm
- Overall length: 520mm
- Screw centres: 400mm
- Finish: 304 Grade BSS

*High quality Stainless Steel fittings, including grub-screws.*

WARRANTY 10 YEARS MECHANICAL 5 YEARS FINISH




**DP2**

- Diameter: 32mm
- Overall length: 435mm
- Screw centres: 400mm
- Finish: 304 Grade BSS

*High quality Stainless Steel fittings, including grub-screws.*

WARRANTY 10 YEARS MECHANICAL 5 YEARS FINISH



**DP3**

- Diameter: 25mm
- Overall length: 430mm
- Screw centres: 400mm
- Finish: 304 Grade BSS

*High quality Stainless Steel fittings, including grub-screws.*

WARRANTY 10 YEARS MECHANICAL 5 YEARS FINISH



**DP4**

- Rectangular tube pull
- Profile: 40mm x 20mm
- Overall length: 600mm
- Screw centres: 580mm
- Finish: 316 Grade BSS, Black finish via special order

*High quality Stainless Steel fittings, including grub-screws.*

WARRANTY 10 YEARS MECHANICAL 10 YEARS FINISH



**DP5**

- Rectangular tube bar pull
- Profile: 40mm x 20mm
- Overall length: 600mm
- Screw centres: 450mm
- Finish: 316 Grade BSS, Black finish via special order

*High quality Stainless Steel fittings, including grub-screws.*

WARRANTY 10 YEARS MECHANICAL 10 YEARS FINISH



**DP6.600  
DP6.900**

- Oval tube bar pull
- Overall length: 600mm, 900mm
- Screw centres: 420mm, 720mm
- Finish: 316 Grade BSS

*High quality Stainless Steel fittings, including grub-screws.*

WARRANTY 10 YEARS MECHANICAL 10 YEARS FINISH



## ENTRANCE KITS

Kit Includes, Mortice Lock, Euro Cylinder, 68mm Double Turn, Escutcheon

NEW

NEW



FDKIT1

Kit Includes:

- Door Pull DP1
- Round Escutcheon I-ESC4E
- Round Double Turn I-TTD4
- Euro Mortice Sashlock 60mm backset S785/60
- Euro Cylinder & Turn 68mm overall



FDKIT2

Kit Includes:

- Door Pull DP2
- Round Escutcheon I-ESC4E
- Round Double Turn I-TTD4
- Euro Mortice Sashlock 60mm backset S785/60
- Euro Cylinder & Turn 68mm overall



FDKIT3

Kit Includes:

- Door Pull DP3
- Round Escutcheon I-ESC4E
- Round Double Turn I-TTD4
- Euro Mortice Sashlock 60mm backset S785/60
- Euro Cylinder & Turn 68mm overall



FDKIT4

Kit Includes:

- Door Pull DP4
- Square Escutcheon I-ESC5E
- Square Double Turn I-TTD5
- Euro Mortice Sashlock 60mm backset S785/60
- Euro Cylinder & Turn 68mm overall
- Black finish available via special order



FDKIT5

Kit Includes:

- Door Pull DP5
- Square Escutcheon I-ESC5E
- Square Double Turn I-TTD5
- Euro Mortice Sashlock 60mm backset S785/60
- Euro Cylinder & Turn 68mm overall



FDKIT6

Kit Includes:

- Door Pull DP600
- Round Escutcheon I-ESC4E
- Round double turn I-TTD4
- Euro Mortice Sashlock 60mm backset S785/60
- Euro Cylinder & Turn 68mm overall



## MECHANICAL DIGITAL LOCK S201-S

- Mechanical digital entrance lock suitable for residential use.
- Easy code programmable lock
- Supplied with a 60mm backset
- Door thickness 35-55mm
- Not suitable for use in high salt and sulphur environments.
- Finish: Satin Chrome Plate



## ENTRANCE KITS

Sylvan entrance kits are suitable for use with Sylvan Door Pull collection.



The kit includes the following items:

- Euro escutcheon - square or round
- 5 pin euro cylinder and turn (6 pin available on request)
- Overall length: cylinder 68mm for 5 pin
- Euro profile mortice lock S785: 60mm backset, 85mm key and turn separation, 21.5mm single throw deadbolt, reversible latch bolt, key retraction of latch
- Double thumb turn with 27mm knob
- Maximum door thickness: 45mm
- Plates: 56.5 x 56.5mm square option, 56.5mm diameter round option
- Finish: SNP, Black via Special Order

Refer page 2, 3 for pull handle options. See page 17 for details on double turns.

## CENTRO ENTRANCE KITS

All Centro lever handle shapes are available in kit form.



The kit includes the following items:

- Centro selected lever handle on a long backplate
- 5 pin euro cylinder and turn (6 pin available on request)
- Overall length: cylinder 68mm for 5 pin
- Euro profile mortice lock S785: 60mm backset, 85mm key separation, 21.5mm single throw deadbolt, reversible latch bolt, key retraction of latch
- Maximum door thickness: 45mm
- Finish: SNP

Refer page 10-14 for Centro lever handle options.

All Centro lever shapes are available in kit form.

- |         |          |
|---------|----------|
| Asti:   | HSI-90EK |
| Monza:  | HSI-91EK |
| Savona: | HSI-92EK |
| Como:   | HSI-93EK |
| Andora: | HSI-94EK |
| Murano: | HSI-95EK |

## ENTRANCE SETS



**EH805**

- Material: Zinc
- 270mm overall for handle
- 170mm b/c
- Finish: SNP



**EH710**

- Material: Brass
- 284mm overall for handle
- 208mm b/c
- Finish: SCP



**EH711**

- Material: Zinc
- Finish: SCP, Black



- Operation: Latch operated by thumb lever from outside. Round knob inside
- Security: Heavy duty double cylinder deadbolt with reinforced security rose

- Door thickness: 34-57mm • Backset: Adjustable 60 or 70mm
- EH710 & EH711 require 54mm holes through door required for deadbolt and handleset
- EH805 requires a 51mm hole through door.

## CENTRO ENTRANCE KITS

All Centro lever handle shapes are available in kit form.



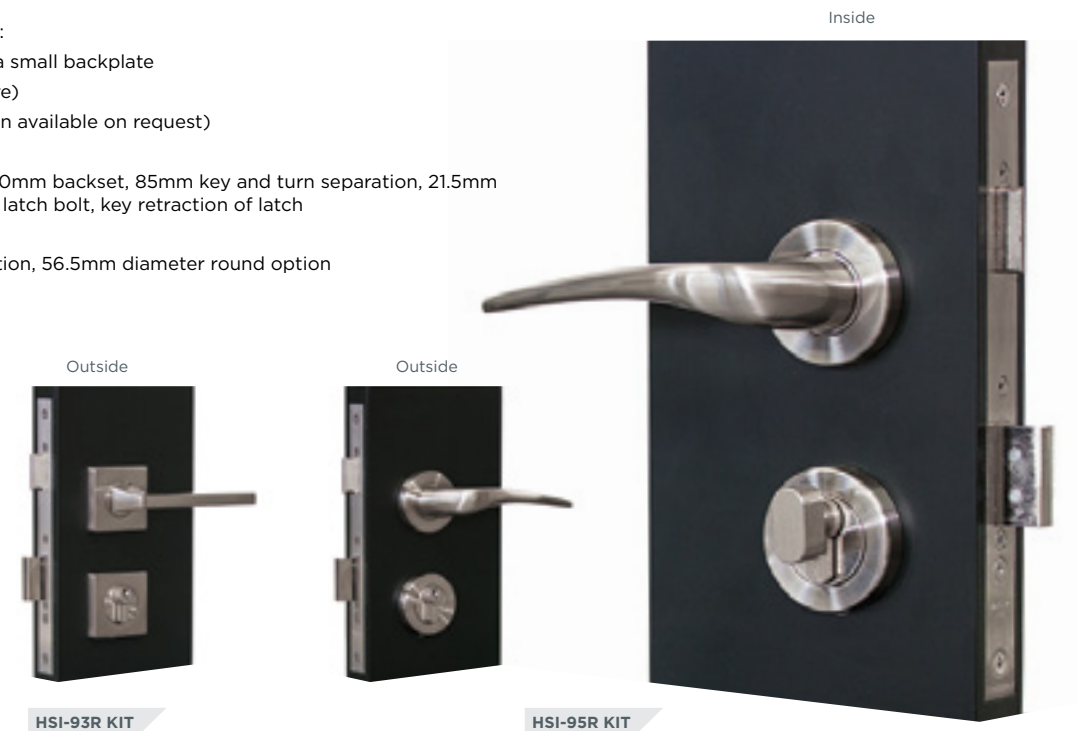
The kit includes the following items:

- Centro selected lever handle on a small backplate
- Euro escutcheon (round or square)
- 5 pin euro cylinder and turn (6 pin available on request)
- Overall length: 68mm for 5 pin
- Euro profile mortice lock S785: 60mm backset, 85mm key and turn separation, 21.5mm single throw deadbolt, reversible latch bolt, key retraction of latch
- Maximum door thickness: 45mm
- Plates: 56.5 x 56.5mm square option, 56.5mm diameter round option
- Finish: SNP

Refer page 10-14 for Centro lever handle options.

All Centro lever shapes are available in kit form.

- |         |          |
|---------|----------|
| Asti:   | HSI-90RK |
| Monza:  | HSI-91RK |
| Savona: | HSI-92RK |
| Como:   | HSI-93RK |
| Andora: | HSI-94RK |
| Murano: | HSI-95RK |



HSI-93R KIT

HSI-95R KIT

## SAVONA

I-92RG

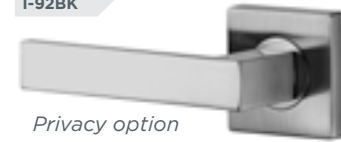
NEW



Graphite Finish

No handing required

I-92BK



Privacy option

I-92R



I-92L



I-92E



I-92E.85



I-92UP



## SAVONA

## COMO

I-93R



No handing required

I-93BK



Privacy option

I-93L



I-93E



I-93E.85



I-93UP



## COMO

## ANDORA

I-94R



No handing required

I-94BK



Privacy option

I-94L



I-94E



I-94E.85



I-94UP



## ANDORA

- Passage & Privacy lever furniture
- Concealed screw fixing
- Rose diameter: 56mm
- Privacy function is available by integrated privacy on the rose of the handle or Privacy function by separate turn and emergency release. Refer page 16 for turn options.
- 60mm latch backset is included with all Passage & Privacy sets

- All curved lever dummy trim handles are handed - refer page 50 for handing diagram
- Dummy trim can be installed back to back for use on French doors
- Back plate shape can be changed (special order)
- Finish: SNP - all handle shapes, Graphite - Savona, Asti only



### Lever keyhole

- Lever keyhole stamped
- Use with Sylvan S717, S795 Lever key mortice locks, either 2" or 3" lock body
- 57mm spacing between spindle and lever keyhole
- Finish: SNP

### Euro keyhole

- Euro profile keyhole stamp
- Use with Sylvan S735 euro key mortice lock, either 2" or 3" lock body
- Use with Sylvan S725 euro double cylinder or S725 euro cylinder and turn
- 48mm spacing between spindle and euro keyhole
- Finish: SNP

### Euro keyhole 85mm

- Euro profile keyhole stamp
- Use with Sylvan S785, S726 euro mortice lock
- Use with Sylvan S725 euro double cylinder or S725 euro cylinder and turn
- 85mm spacing between spindle and euro keyhole
- Finish: SNP

### Unpunched

- Unpunched backplate suitable for use in passage situation
- Use with Sylvan MLS latch - 60 or 70mm
- Finish: SNP
- All handles overall backplate measurements: 45mm (w) x 240mm (h)



## ASTI

I-90RG

NEW



Graphite Finish  
No handing required

I-90BK



Privacy option

I-90R



I-90L



I-90E



I-90E.85



I-90UP



## ASTI

## MONZA

I-91R



Handing required for Dummy Trim only.  
Refer to back cover for handling diagram.

I-91BK



Privacy option

I-91L



I-91E



I-91E.85



I-91UP



## MONZA

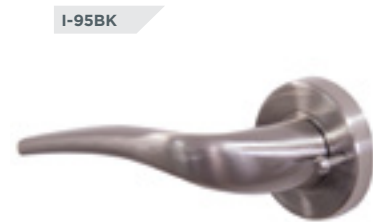
## MURANO

I-95R



Handing required for Dummy Trim only.  
Refer to back cover for handling diagram.

I-95BK



Privacy option

I-95L



I-95E



I-95E.85



I-95UP



## MURANO

- Passage & Privacy lever furniture
- Concealed screw fixing
- Rose diameter: 56mm
- Privacy function is available by integrated privacy on the rose of the handle or Privacy function by separate turn and emergency release. Refer page 16 for turn options.
- 60mm latch backset is included with all Passage & Privacy sets

- All curved lever dummy trim handles are handed - refer page 50 for handling diagram
- Dummy trim can be installed back to back for use on French doors
- Back plate shape can be changed (special order)
- Finish: SNP - all handle shapes, Graphite - Savona, Asti only



### Lever keyhole

- Lever keyhole stamped
- Use with Sylvan S717, S795 Lever key mortice locks, either 2" or 3" lock body
- 57mm spacing between spindle and lever keyhole
- Finish: SNP

### Euro keyhole

- Euro profile keyhole stamp
- Use with Sylvan S735 euro key mortice lock, either 2" or 3" lock body
- Use with Sylvan S725 euro double cylinder or S725 euro cylinder and turn
- 48mm spacing between spindle and euro keyhole
- Finish: SNP

### Euro keyhole 85mm

- Euro profile keyhole stamp
- Use with Sylvan S785, S726 euro mortice lock
- Use with Sylvan S725 euro double cylinder or S725 euro cylinder and turn
- 85mm spacing between spindle and euro keyhole
- Finish: SNP

### Unpunched

- Unpunched backplate suitable for use in passage situation
- Use with Sylvan MLS latch - 60 or 70mm
- Finish: SNP
- All handles overall backplate measurements: 38mm (w) x 239mm (h)

TRENTO

I-85R



Handing required for Dummy Trim only.  
Refer to back cover for handling diagram.

I-85BK



Privacy option

- Passage & Privacy lever furniture
- Concealed screw fixing
- Rose diameter: 56mm
- Privacy function is available by integrated privacy on the rose of the handle or Privacy function by separate turn and emergency release. Refer page 16 for turn options.

- 60mm latch backset is included with all Passage & Privacy sets
- All curved lever dummy trim handles are handed - refer page 50 for handling diagram
- Dummy trim can be installed back to back for use on French doors
- Finish: SCP



I-85L



I-85E



I-85E.85



I-85UP

Lever keyhole

- Lever keyhole stamped
- Use with Sylvan S717, S795 Lever key mortice locks, either 2" or 3" lock body
- 57mm spacing between spindle and lever keyhole
- Finish: SCP

Euro keyhole

- Euro profile keyhole stamp
- Use with Sylvan S735 euro key mortice lock, either 2" or 3" lock body
- Use with Sylvan S725 euro double cylinder or S725 euro cylinder and turn
- 48mm spacing between spindle and euro keyhole
- Finish: SCP

Euro keyhole 85mm

- Euro profile keyhole stamp
- Use with Sylvan S785, S726 euro mortice lock
- Use with Sylvan S725 euro double cylinder or S725 euro cylinder and turn
- 85mm spacing between spindle and euro keyhole
- Finish: SCP

Unpunched

- Unpunched backplate suitable for use in passage situation
- Use with Sylvan MLS latch - 60 or 70mm
- Finish: SCP

PORTO

I-21PS



No handing required

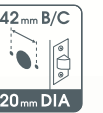
I-21BK



Privacy option

- 304 Grade Stainless Steel lever
- Passage & Privacy lever furniture
- Concealed screw fixing
- Rose diameter: 56mm
- 60mm latch is included with all Passage & Privacy sets

- Dummy trim can be installed back to back for use on French doors
- Entrance Kits also available
- Finish: Stainless Steel



LAGOS

I-20BK



I-20PS



No handing required

Privacy option

- 304 Grade Stainless Steel lever
- Passage & Privacy lever furniture
- Concealed screw fixing
- Rose diameter: 56mm
- 60mm latch is included with all Passage & Privacy sets

- Dummy trim can be installed back to back for use on French doors
- Entrance Kits also available
- Finish: Stainless Steel, Black





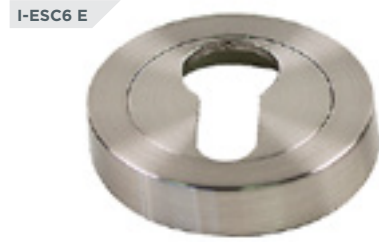
# ESCUTCHEONS

Sylvan escutcheons are suitable for use with Centro Lever Handles and Stainless Steel Lever Handles



**Oval Euro Keyhole Escutcheon**

- Diameter: 51mm
- Finish: SNP



**Round Euro Keyhole Escutcheon**

- Diameter: 51mm
- Use with Sylvan euro cylinder S725
- Finish: SNP



**Euro Profile Keyhole Escutcheon**

- Diameter: 55mm
- Use with Sylvan Stainless Steel lever handles, Lagos
- Finish: SS, Black via special order



**Oval Cylinder Keyhole Escutcheon**

- Diameter: 56.6mm
- Finish: SCP, SNP



**Euro Profile Keyhole Escutcheon**

- Diameter: 56.6mm
- Use with Sylvan euro cylinder S725
- Finish: SCP, SNP, Black via special order



**Lever Keyhole Escutcheon**

- Diameter: 56.6mm
- Finish: SCP, SNP



**Oval Cylinder Keyhole Escutcheon**

- Backplate: 56.6 x 56.6mm
- Finish: SNP



**Euro Profile Keyhole Escutcheon**

- Backplate: 56.6 x 56.6mm
- Use with Sylvan euro cylinder S725
- Finish: SNP, CP, Black via special order



**Lever Keyhole Escutcheon**

- Backplate: 56.6 x 56.6mm
- Finish: SNP



**Euro Profile Keyhole Escutcheon**

- Diameter: 55mm x 55mm
- Use with Sylvan Stainless Steel lever handles, Porto
- Finish: SS, Black via special order



**Square Euro Keyhole Escutcheon**

- Backplate: 51 x 51mm
- Use with Sylvan euro cylinder S725
- Finish: SNP



**Square Oval Keyhole Escutcheon**

- Backplate: 51 x 51mm
- Finish: SNP

# CENTRO COMPONENTS CHART

	Lever Key	Euro Key	Euro 85 Spacing	Unpunched
SQUARE ROSE	I-92R I-93R I-94R	I-92L I-93L I-94L	I-92E I-93E I-94E I-92E.85 I-93E.85 I-94E.85	I-92UP I-93UP I-94UP
ROUND ROSE	I-90R I-91R I-95R I-85R	I-90L I-91L I-95L I-85L	I-90E I-91E I-95E I-85E I-90E.85 I-91E.85 I-95E.85 I-85E.85	I-90UP I-91UP I-95UP I-85UP
MORTICE LOCKS	S791/2.5" & S791/3" S721/46	S717/2.5" & S717/3"	S735/2.5" & S735/3"	S726/46 & S726/51
EURO CYLINDERS	S785/45 S785/50 S785/60 S785/70 S731/2.5"	S795/2.5" & S795/3"	S725TT/S725DBL S725BKTT	S785/45 S785/50 S785/60 S785/70 S725TT/S725DBL S725BKTT
ESCUTCHEONS	I-ESC5 L I-ESC4 L I-ESC5 E I-ESC4 E			
MORTICE LATCH	MLS708 & MLS608			MLS708 & MLS608

PRIVACY FOR BATHROOMS



I-TT4



Bathroom Privacy Turn

- Thumb turn and emergency release
- Diameter: 56.6mm
- Spindle: 6mm
- Concealed screw fixing
- Finish: SCP and SNP

I-TT5



Bathroom Privacy Turn

- Thumb turn and emergency release
- Backplate: 56.6 x 56.6mm
- Spindle: 6mm
- Concealed screw fixing
- Finish: SNP

I-TT6



Bathroom Privacy Turn

- Turn and emergency release
- Diameter: 51mm
- Spindle: 6mm
- Finish: SNP

I-TT7



Bathroom Privacy Turn

- Turn and emergency release
- Backplate: 51 x 51mm
- Spindle 6mm
- Finish: SNP

NEW

THUMB TURNS

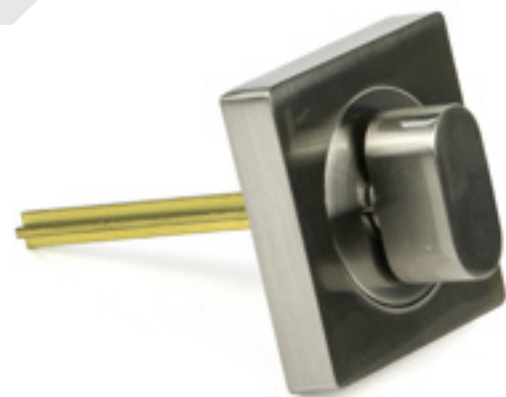
I-TT8



Round Turn

- Spindle: 6mm star design
- Backplate: 51mm
- Finish: SNP

I-TT9



Square Turn

- Spindle: 6mm star design
- Backplate: 51mm
- Finish: SNP

PRIVACY KITS FOR BATHROOMS



HSI-BATHSET



Kit Includes:

- I-TT4** Round turn/ backplate and emergency release; (56.6mm)
- I-BATH 2** 60mm latch, Spindle: 6mm, if 70mm latch required order HSI-BATHSET4
- Finish SNP, SCP

HSI-BATHSET 2



Kit Includes:

- I-TT5** Round turn, square backplate and emergency release; (56.6mm)
- I-BATH 2** 60mm latch, Spindle: 6mm, if 70mm latch required order HSI-BATHSET5
- Finish SNP

HSI-BATHSET 6



Kit Includes:

- I-TT6** Round turn/ backplate and emergency release; (51mm)
- I-BATH 2** 60mm latch, Spindle: 6mm

HSI-BATHSET 7



Kit Includes:

- I-TT7** Round turn, square backplate and emergency release; (51mm)
- I-BATH 2** 60mm latch, Spindle: 6mm

DOUBLE TURN SETS

I-TTD4



Double turn, round backplate

- Spindle: 8mm
- Backplate: 56.6mm
- Finish: SNP

I-TTD5



Double turn, square backplate

- Spindle: 8mm
- Backplate: 56.6mm
- Finish: SNP, Black via special order



## NEWTON Tubular Leverset



▲ ET E39ET

- Functions: Entrance, Bathroom, Passage, Dummy Trim
- Door thickness: 30-45mm
- Matching deadbolt available EDB6
- Backset: Adjustable 60 or 70mm
- Handing: Not required

- Dummy Trim can be back to back for use on French doors
- Low rotation latch. Solid construction
- Turn button to operate entrance and bathroom functions from the inside
- Finish: SCP



▲ BK E39BK



▲ PS E39PS ▲ DT E39DT

## OAKLAND Tubular Leverset



Handing required. Refer page 49 for handling



▲ BK E46BK



▲ ET E46ET

- Functions: Entrance, Bathroom, Passage, Dummy Trim
- Door thickness: 30-45mm
- Matching deadbolt available EDB5
- Backset: Adjustable 60 or 70mm
- Handing: Only required for Dummy Trim

- Dummy Trim can be back to back for use on French doors
- Low rotation latch. Solid construction
- Turn button to operate entrance and bathroom functions from the inside
- Finish: SNP



▲ PS E46PS ▲ DT E46DT

## HOUSTON Tubular Leverset



▲ BK E37BK



▲ PS E37PS ▲ DT E37DT

- Functions: Entrance, Bathroom, Passage, Dummy Trim
- Door thickness: 30-45mm
- Backset: Adjustable 60 or 70mm
- Handing: Not required
- Dummy Trim can be back to back for use on French doors

- Low rotation latch
- Suitable for DIY and trade, removable handles for easy installation
- Concealed screw fixing on all functions
- Turn button to operate entrance and bathroom functions from the inside
- Finish: SCP



▲ ET E37ET

## DENVER Tubular Leverset



▲ ET E60ET

- Functions: Entrance, Bathroom, Passage, Dummy Trim
- Door thickness: 30-45mm
- Backset: Adjustable 60 or 70mm
- Handing: Not required
- Dummy Trim can be back to back for use on French doors

- Low rotation latch
- Suitable for DIY and trade, removable handles for easy installation
- Concealed screw fixing on all functions
- Turn button to operate entrance and bathroom functions from the inside
- Finish: SCP



▲ BK E60BK



▲ PS E60PS ▲ DT E60DT

## RICHMOND

### Tubular Leverset



▲ ET E50ET

- Functions: Entrance, Bathroom, Passage, Dummy Trim
- Door thickness: 30-45mm
- Backset: Adjustable 60 or 70mm
- Handing: Not required
- Dummy Trim can be back to back for use on French doors

- Low rotation latch
- Suitable for DIY and trade, removable handles for easy installation
- Concealed screw fixing on all functions
- Turn button to operate entrance and bathroom functions from the inside
- Finish: SCP



▲ BK E50BK



▲ PS E50PS ▲ DT E50DT

## SEATTLE

### Cylindrical Leverset



Handing required. Refer page 50 for handling



▲ BK E30BK



▲ ET E30ET

- Functions: Entrance, Bathroom, Passage, Dummy Trim
- Door thickness: 28-43mm
- Backset: 60 & 70mm latches supplied
- Handing: Refer to handing diagram below
- Chassis: Threaded on both sides for easy alignment and solid fixing

- Push button and panic release on Entrance and Bathroom inner lever handle
- Handing required for Entrance/Bathroom and Dummy Trim - refer page 50 for handing diagram
- Finishes: SCP or PB

▲ PS E30PS ▲ DT E30DT

## FLUSH PULLS

PAGE 36-37





# DEADBOLTS

Double or single cylinder

EDB1



### Single Cylinder Deadbolt

- Operation: Key from outside. Thumb turn inside
- Backset: Adjustable 60 or 70mm
- Door thickness: 35-50mm
- Keying: May be keyed in pair with Sylvan entrance sets
- Finishes: PB, SS



EDB2



### Double Cylinder Deadbolt

- Operation: By key from either side
- Backset: Adjustable 60 or 70mm
- Door thickness: 35-45mm
- Keying: May be keyed in pair with Sylvan entrance sets
- Comes complete with one-way fixing screws to prevent the lock from being removed from the inside
- Finishes: AB, PB, SS

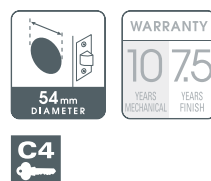


EDB5



### Single Cylinder Deadbolt

- Operation: Key from outside. Thumb turn inside
- Designed to match Oakland Entrance
- Backset: 60 or 70mm
- Hardened steel roller
- Door thickness: 35-50mm
- Concealed screw fixing
- Finish: SNP

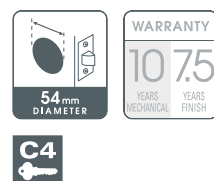


EDB6



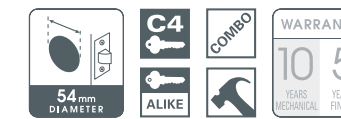
### Single Cylinder Deadbolt

- Operation: Key from outside. Thumb turn inside
- Designed to match Newton Entrance
- Backset: 60 or 70mm
- Hardened steel roller
- Door thickness: 35-50mm
- Concealed screw fixing
- Finish: SCP



# QUEST

Cylindrical Knobset



▲ ET E71ET ▲ DC E71DC

- Functions: Entrance, Double Cylinder Entrance, Bathroom, Passage, Dummy Trim
- Door thickness: 29-45mm
- Backset: 60 & 70mm latches supplied
- Handing: Reversible



▲ PS E71PS ▲ DT E71DT

- Dummy Trim fixed from back of door
- Chassis: Threaded on both sides for easy alignment and solid fixing
- Push button and panic release on Entrance and Bathroom inner knob



▲ BK E71BK

- Finishes: SS, PB or AB (Combination set not available in AB)

# VITA

Cylindrical Knobset



▲ ET E91ET ▲ DC E91DC

- Functions: Entrance, Double Cylinder Entrance, Bathroom, Passage, Dummy Trim
- Door thickness: 29-45mm
- Backset: 60 & 70mm latches supplied
- Handing: Reversible



▲ PS E91PS ▲ DT E91DT

- Dummy Trim fixed from back of door
- Chassis: Threaded on both sides for easy alignment and solid fixing
- Push button and panic release on Entrance and Bathroom inner knob



▲ BK E91BK

- Finishes: SS or PB

### Knobset Functions

<p>▲ ET Entrance Lock</p> <p>Latch bolt operated by key from outside, by knob inside. Inside handle always active. Deadlocking latch bolt.</p>	<p>▲ DC Entrance Lock</p> <p>Both knobs locked and unlocked by key. Deadlocking latch bolt.</p>	<p>▲ BK Bathroom Lock</p> <p>For bedroom, bathroom or toilet. Inside push button locks outer knob. Coin operated emergency release.</p>	<p>▲ PS Passage Latch</p> <p>For interior doors not requiring locking. Knobs are always active.</p>	<p>▲ DT Dummy Trim</p> <p>Fixed knob for wardrobe and cupboard doors. Use with roller bolt, magnetic catch or similar.</p>
--	---	---	---	--



GLOBE

Tubular Knobset



ET UE67ET

- Functions: Entrance, Bathroom, Passage, Dummy Trim
- Door thickness: 32-50mm
- Backset: 60 or 70mm latch



PS UE67PS DT UE67DT

- Dummy Trim fixed from back of door
- Supplied in boxed packs only. Not available in blister pack



BK UE67BK

- Turn button to operate entrance and bathroom functions from the inside
- Finishes: SS

AMOS

Tubular Knobset



BK E61BK

- Functions: Bathroom, Passage, Dummy Trim
- Door thickness: 30-50mm
- Suitable as a replacement for door



PS E61PS

- hardware with existing spindle holes from 10 to 30mm
- Backset: 60-70mm adjustable
- Dummy Trim can be back to back



DT E61DT

- for use on French doors
- Finish: SS



CERAMIC



LSCWC

Ceramic knob, Gold Plated base



LSCW

White ceramic knob, Gold Plated base

LSCWW

White ceramic knob, White base

LSCWCP

White ceramic knob, Chrome Plated base

WOOD



LSS5RIM

Rimu knob, Gold Plated or Antique Brass base

LSS5PINAB

Pine knob, Antique Brass base

LSS5WHITEG

White knob, Gold Plated base



LS1

Rimu knob, Florentine Bronze base



METAL



LS76

Die-cast hammered Bronze knob and base  
Die-cast White knob and base



I-51R

Heavy duty Brass knob  
Finish: SCP, PB  
Not suitable for UF54 kit.

*Note: Latches supplied separately (see page 30).*



LS7

Rimu knob, Gold Plated or Antique Brass base



LS9

White knob, Gold Plated or White base

*Note: All knobs shown on this page have concealed screw fixing, are supplied with a 7.6mm spindle. Latch - MLS or ML7 sold separately.*

MORTICE LOCKS

MADE IN EUROPE

S717/2.5"  
S717/3"



3 Lever Mortice Lock

- Backsets: 45mm & 58mm Brass deadbolt operated by key from either side
- Latch bolt by knob or lever from either side
- 96 Key differs
- Electrobrassed or NP forend & striker plate



S785



Euro Profile Mortice Lock

- Backset: 45, 50, 60, 70mm
- 85mm key and turn separation
- 21.5mm single throw deadbolt
- Reversible latch bolt
- Key retraction of latch
- Strike box available on request
- SS forend

S721/46



Euro Profile Deadlock

- Euro profile cylinder deadlock
- Backset: 30mm
- Bolt throw: 15mm with one key turn
- Latchbolt: SS forend

S795/2.5"  
S795/3"



5 Lever Security Mortice Lock

- Backsets: 45 & 58mm
- Latch bolt reversible without opening case
- Deadbolt throws 16mm with one key turn
- 1000 Key differs
- Anti pick cartridge
- Brass or SS forend & striker plate

S735/2.5"  
S735/3"



Euro Profile Mortice Lock

- Backsets: 45mm & 58mm
- Latchbolt reversible without opening case
- Deadbolt throws 16mm with one key turn
- Brass or SS forend & striker plate

S726/46  
S726/51



Euro Profile Mortice Sashlock

- Backsets: 30 or 35mm
- Latchbolt: Brass, reversible without opening the case
- Special feature: Latchbolt can be withdrawn by an extra key turn
- Deadbolt: Brass head, Steel latch
- Forend: SS

S791/2.5"  
S791/3"



5 Lever Security Mortice Deadlock

- Backsets: 45 & 58mm
- Bolt throw 16mm with one key turn
- 1000 key differs
- Antipick cartridge
- Brass or SS forend & striker plate

S731/2.5"  
S731/3"



Euro Profile Security Mortice Deadlock

- Backsets: 45 and 58mm
- Bolt throws 16mm with one key turn
- Cylinders sold separately, refer page 30
- Brass or SS forend & striker plate

S720/40



Euro Cylinder Roller Bolt Mortice Lock

- Backset: 40mm 85mm spindle or cylinder separation
- Forend: SS

REBATED FOREND KITS

S735R



MADE IN EUROPE

Rebated Forend Kit

- Suits: S735 euro profile lock & S795 5 lever mortice lock
- Finishes: Satin Brass, Nickel Matt

S717R



Rebated Forend Kit

- Suits: S717 3 lever mortice lock
- Finishes: PB, CP

S757R



Rebated Forend Kit

- Suits: S757 euro cylinder Roller bolt lock
- Finish: SS

S726R



Rebated Forend Kit

- Suits: S726 and S785 euro cylinder mortice locks
- Finish: SS

MLR1



Mortice Latch or Deadbolt Rebated Forend Kit

- Suits: Houston, Denver, Newton, Oakland, Quest, Richmond, Seattle, Vita, MLS latches EDB1, EDB2, EDB5 & EDB6 deadbolts,
- Finishes: CP, SCP



LATCHES & BOLTS,



- Mortice Latch**
- 70mm backset
  - 7.6mm square follower
  - Produced in high strength nylon
  - Finishes: Brown, White
- Mortice Latch**
- 60 or 70mm backsets
  - 7.6mm or 8mm square follower
  - Finishes: AB (70mm only), PB, SNP
- Privacy Bolt**
- 60 or 70mm adjustable backsets
  - Produced in high strength nylon
  - Knob Finishes: GP, Pine, Rimu, SCP, White, SNP
- Roller Bolt**
- Externally adjustable roller ball
  - Finishes: CP, PB, SCP



- Tubular Latch**
- Passage Latch
  - Adjustable 60-70mm
  - Finish: SS
- Tubular Latch**
- Entrance Latch
  - Adjustable 60-70mm
  - Finish: SS
- Magnetic Latch**
- 60mm backset
  - Tools available
  - Adjustable striker
  - Smooth latch operation
  - Privacy option available MLSMBK
  - Tubular Privacy bolt available
  - Finish: SS



- High Rotation Tubular Extension Latch**
- Suitable for use with Sylvan Globe knobsets
  - 127mm backset
  - 8mm square follower
  - Finish: SS
- Bathroom Bolt**
- 60 or 70mm backsets
  - 6mm square follower
  - Use with Sylvan privacy turns on page 18
  - Forend finish: BSS



- Cylindrical Latch**
- 60 or 70mm backsets
  - Suits Sylvan cylindrical entrance, bathroom & passage sets
  - Deadlocking latch available for entrance set
  - Finishes: PB, SS
- Heavy Duty Cylindrical Latch**
- 70mm Backset
  - Finish: Stainless Steel
- Heavy Duty Cylindrical Latch**
- 60mm Backset
  - Finish: Stainless Steel
- Extension Latch**
- 90 or 127mm backsets
  - Suits Sylvan cylindrical entrance sets
  - Finishes: 90mm CP 127mm PB, SS

STRIKER PLATES



- Stainless Steel Extended Strike Plate**
- Overall: 50mm width
  - Suitable for use with Sylvan S785 euro mortice lock
  - Strike plates are handed
  - Finish: SS



- Striker Plate**
- Overall: 45mm
  - Finishes: SS, PB
- Striker Plate**
- Overall: 48mm
  - Finish: SS



- Striker Plate**
- Overall: 50mm
  - Finish: SS
- Striker Plate**
- Overall: 46mm
  - Height 70mm
  - Finish: SS



- Striker Plate**
- Overall: 39mm
  - Finish: SS
- Striker Plate**
- Overall: 60mm
  - Height: 176mm
  - For use with: 735 and 795 locks
  - Finish: SS

SPINDLES



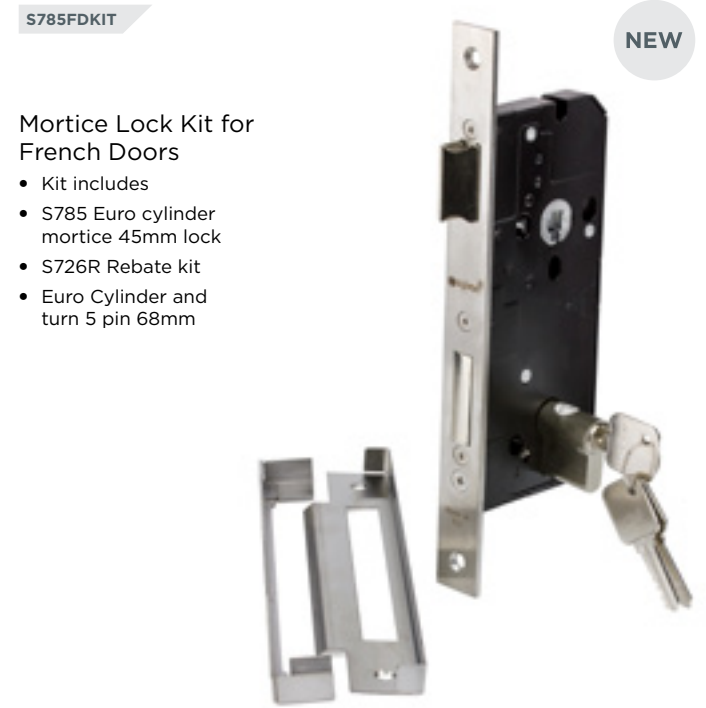
- Spindles**
- All spindles are 7.6 x 7.6mm
  - SPLS135, SPLSM steel material
  - SPL,SPW Plastic material

INSTALLATION TOOLS



- Forester Bit**
- 24mm forstner bit for use with the Sylvan magnetic catch. MCI
- Strike plate adjusting screw driver**
- Magnetic Latch Centering Tool**

FRENCH DOOR KIT



- Mortice Lock Kit for French Doors**
- Kit includes
  - S785 Euro cylinder mortice 45mm lock
  - S726R Rebate kit
  - Euro Cylinder and turn 5 pin 68mm

EURO CYLINDERS

S725TT



Euro Profile Single Cylinder & Thumb Turn

- Available in 5 or 6 pin cylinders
- 5 pin, 60mm or 68mm overall length
- 6 pin, 70mm overall length
- Finishes: SNP, PB, CP



S725DBL



Euro Profile Double Cylinder

- Available in 5 or 6 pin cylinders
- 5 pin, 60mm or 68mm overall length
- 6 pin, 70mm overall length
- Finishes: SNP



S725BKTT



Euro Profile Cylinder Bathroom Turn & Emergency Release

- 70mm overall length
- Finishes: SNP

S725/40  
S725/45



Euro Profile Half Cylinder

- 6 pin, 40mm or 45mm overall length
- Finishes: SNP

S725TT/40  
S725TT/45



Euro Profile Half Cylinder & Turn

- 40mm or 45mm overall length
- Finishes: SNP



ISEO products are also available from Sylvan and GDR Architectural, to see ISEO Euro Cylinders refer to page 48.

DOOR STOPS

DS16



- 98mm length including catch
- External wall mounted
- Finish: SCP

DS17



- 91.6mm high including catch
- External floor mounted
- Finish: SCP

DS18



- 64mm length including catch
- External small wall mounted
- Finish: SCP

DS19



- 52.8mm high
- Packer (for use with DS17)

DS20



- 25.4mm high
- Floor mounted
- Finish: SCP

DS6



- 26.3mm high
- Floor mounted
- Finishes: CP, SCP

DS25



- 38mm high
- Floor mounted
- Finish: SNP

DS26



- 40mm high
- Floor mounted
- Finish: SNP

DS30



- 70mm high
- Floor mounted
- Finish: SA

DS9  
DS9A



- DS9 46mm high
- DS9A 70mm high
- Floor mounted
- Finish: SA

DOOR STOPS

**DS22**

- 76mm high
- Floor mounted
- Suitable for external use
- Finish: 304 Grade SS

**DS7**

- 76.6mm length
- Wall mounted
- Socket hold-back
- Finishes: CP, PB, SCP

**DS3**

- 92.5mm length including magnet
- Wall mounted
- Magnetic hold-back
- Finishes: CP, PB, SCP

**DS4**

- 75.5mm length
- Wall or Floor mounted
- Magnetic hold-back
- Finishes: CP, PB, SCP

**DS32**

- 75mm length
- Wall or Floor mounted
- Magnetic hold-back
- Finishes: SS

**DS15**

- 75mm length
- Wall or Floor mounted
- Square door stop (includes both rubber stopper options)
- Finish: 304 Grade SS

**DS1**

- 75mm length
- Wall mounted
- 3 screw fixing
- Finishes: CP, PB, SCP

**DS2**

- 73.3mm length
- Wall mounted
- Threaded fixing stud
- Finishes: CP, SCP

DOOR STOPS

**DS28**

- 108mm length
- Wall mounted
- Finish: SNP

**DS23**

- 85mm length
- Wall mounted
- Finish: SCP

**NEW DS27**

- 84mm length
- Wall mounted
- Finish: SNP, Black

**DS31**

- 85mm high
- Wall mounted
- Finish: SS

**DS14**

- 75mm length
- Wall mounted
- Finish: 304 Grade SS

**DS29**

- 110mm length
- Wall mounted
- Finish: SS

**DS21**

- 76mm length
- Wall mounted
- Suitable for external use
- Finish: 304 Grade SS

**DS24**

- 77mm length
- Wall mounted
- Finish: SNP

RETAIL TRADE PACKS

**DS1510**

**DS15 - 10 PACK**

- 75mm length
- Wall or Floor mounted
- Square door stop (includes both rubber stopper options)
- Finish: 304 Grade SS

**DS2410**

**DS24 - 10 PACK**

- 77mm length
- Wall mounted
- Finish: SNP

**DS2710**

**DS27 - 10 PACK**

- 84mm length
- Wall mounted
- Finish: SNP



FLUSH PULLS

SFP2



- 65mm overall
- Finish: BSS

SFP6.L  
SFP6.S



- 49.3mm or 41.2mm overall
- Finish: SNP

SFP12



- 29mm overall
- Sliding door finger pull
- Finish: SNP

SFP4



- 102mm overall
- Finish: BSS

SFP14KIT



- Kit includes 2x SFP14 Flush Pulls 160mm or 224mm overall
- SFP12 finger pull
- Finish: SNP

SC11.100



- 110mm overall
- Finishes: SNP

SFP3



- 108mm between centres
- Finish: BSS

SFP8



- 146mm between centres
- Finish: SNP

SFP11



- 101mm overall
- Finish: SNP

SFP7



- 101mm between centres
- Finishes: CP, PB, SNP

SFP



- 100mm between centres
- Finishes: AB, CP, PB, SNP

SFP5.L  
SFP5.S



- 46mm or 32mm overall
- Finish: SNP

SFP14 SSNP  
SFP14 MSNP



- 160mm and 224mm overall
- Finish: SNP, Black

NEW

CAVITY SLIDERS

SDPPS



- For Cavity Doors Passage Set
- Finishes: CP, PB, SS

SDPBK



- For Cavity Doors Bathroom Set
- Finishes: CP, PB, SS

C1



Cavity Slider Set

- 54mm hole required
- Passage and Privacy options available
- Flush design for total door retraction
- Suits door thickness 32mm to 42mm
- Finish: 304 grade stainless steel

C2



Cavity Slider Set

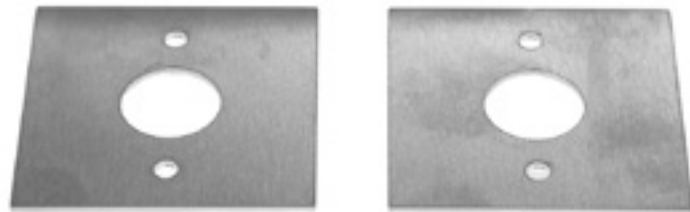
- 54mm hole required
- Passage and Privacy options available
- Flush design for total door retraction
- Suits door thickness 32mm to 42mm
- Finish: 304 grade stainless steel

COMPONENTS

UF4



UF5



- Adapter plate to cover 54mm hole
- For use with Sylvan Centro
  - Round: 65mm diameter, 2 holes at 42mm B/C
  - Square: 65mm square
  - Sold in pairs
  - Not suitable for use with Centro Privacy option
  - Finish: SS

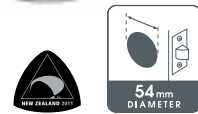


UF5 installed on Centro Andora lever handle

UF54

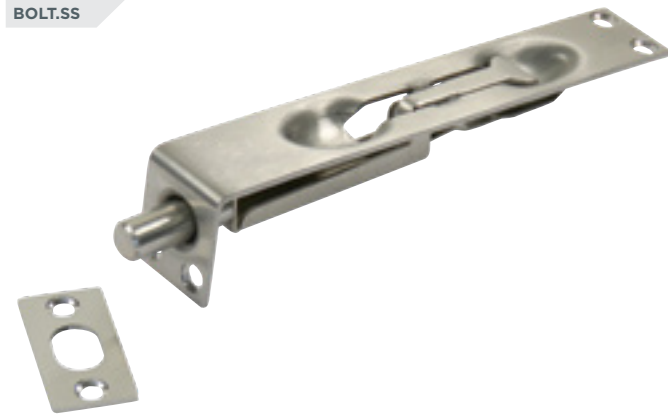


Through-bolt fixing kit



FLUSH BOLT

BOLT.SS



- Bolt.SS
- 304 Grade Stainless Steel
  - Bolt throw 15mm
  - Width 25mm
  - Length 150mm
  - Finishes: SS, PB

NIGHT LATCH

S702



MADE IN EUROPE

- Night Latch
- Yale keyway - 3 keys
  - Backset: 40 and 60mm
  - Complete with rim cylinder
  - Reversible latch bolt for use on inward or outward opening doors
  - Deadlocking handle by turning key outside
  - Finish: Grey

MAGNETIC CATCH

MC1



- Adjustable strength 23mm magnetic catch
- Can be used anywhere a roller catch would normally be fitted
  - No latch noise when opening door
  - Completely concealed when door closed
  - Easy fit stainless steel housing cup makes installation quick and tidy
  - Power adjustment packers supplied
  - Note: 24mm Forstner bit available if required MCFB24

MC3



NEW

- Extra heavy duty concealed magnetic catch
- Suitable for use on doors that require secure closing without latching
  - Includes stainless steel power adjustment packers
  - Easy fit housing cups
  - Self adhesive stainless steel cover plates
  - Drill in rubber buffers
  - Note: additional packers are available MC3Pack

MC4



NEW

- Mini 12mm concealed magnetic catch
- Ideal for use on cabinets
  - Easy fit housing cups
  - Self adhesive stainless steel cover plates
  - Drill in rubber buffers
  - Suitable for use on door thicknesses of 16mm to 30mm

MC5



NEW

- Magnetic Catch with free forstner bit - 8 pack
- Can be used anywhere a roller catch would normally be fitted
  - No latch noise when opening door
  - Completely concealed when door closed

DOOR GUARD

DG1



- Height adjustable packers
- Rubberised arm for smooth operation
- Ergonomically designed
- Designed for New Zealand requirements
- Finish: SNP

SIGNS

- 100 x 100mm
- Brushed Stainless Steel
- Supplied with self-adhesive tape to secure

SN1



SN2



SN3



SN4



SN5



SN6



SN7



MADE IN EUROPE

BANISTER BRACKETS

NEW NEW

BB5



Wall Mounted Banister Bracket

- Designed: In New Zealand for New Zealand homes
- Construction: 316 Grade Stainless Steel
- Finish: SS

BB1



Wall Mounted Banister Bracket

- Designed: In New Zealand for New Zealand homes
- Construction: Sturdy zinc die-cast construction, independently load tested by SGS materials testing
- Compliance: With NZ building code, access routed D1/AS1
- Finish: SCP

BB3



Wall Mounted Banister Bracket

- Designed: In New Zealand for New Zealand homes
- Construction: Sturdy zinc die-cast construction, independently load tested by SGS materials testing
- Compliance: With NZ building code, access routed D1/AS1
- Finish: CP, SCP, Black, SNP

BB6



Upright Banister Bracket

- Designed: In New Zealand for New Zealand homes
- Construction: 316 Grade Stainless Steel
- Finish: SS

BB2



Upright Banister Bracket

- Designed: In New Zealand for New Zealand homes
- Construction: Sturdy zinc die-cast construction, independently load tested by SGS materials testing
- Compliance: With NZ building code, access routed D1/AS1
- Finish: SCP

BB4



NEW

Upright Banister Bracket

- Designed: In New Zealand for New Zealand homes
- Construction: Sturdy zinc die-cast construction, independently load tested by SGS materials testing
- Compliance: With NZ building code, access routed D1/AS1
- Finish: CP, SCP, SNP

LEVER HANDLES

For Aluminium Doors

Leo I-10



Orion I-11



Virgo I-12



- All lever handle shapes available with Euro key 85mm spindle separation, unpunched passage function and patio function
- Standard backplate size 202mm long suits ISEO 741 lock
- 240mm backplate suits ISEO 781 and 723 Performa 3 point lock
- Reversible handing
- Ball assisted cassettes included for smooth and positive lever action
- Stainless steel through bolt fixing screws
- Concealed screw fixing on outside of door
- Grub screw locked split spindle for added strength
- Designed in New Zealand for New Zealand and Australian building requirements
- Finishes: SNP, Black, White, Grey
- Other powder coat colours are available on request

Black



Grey



White



SNP



Sylvan Aluminium Door handle installed with Iseo 741 lock and I-10 Leo handle



PANIC EXIT DEVICES

**ISEO Push Panic Exit**

- Made in Italy
- Modular, reversible
- Lateral locking
- Steel latch with self-locking function
- Suitable for fire doors
- Pre-assembled top/bottom rods
- Caps for top/bottom holes
- Nylon spacer for external control
- Latch keepers included

MADE IN EUROPE

**ISEO Base Panic Exit**

- Made in Italy
- Modular, reversible
- Lateral locking
- Steel latch with self-locking function
- Suitable for fire doors
- Pre-assembled top/bottom rods
- Caps for top/bottom holes
- Nylon spacer for external control
- Latch keepers included

MADE IN EUROPE



SMART CYLINDERS



82K39OVAL  
MADE IN EUROPE

- Libra Smart Oval Cylinder**
- Made in Italy
  - Stand alone electronic oval cylinder
  - Fits Oval profile cylinder locks
  - No wiring required
  - 3 year manufacturer's warranty
  - Battery life 2 years
  - Passage function friendly
  - Able to communicate with smart phone, RFID cards and electronic key tags
  - Range of communication between phone and cylinder: 10 metres
  - Suitable for exterior doors IP66 rated
  - Stores up to 300 users
  - Able to communicate with most iPhone and Samsung smart phones
  - Free app available (ISEO ARGO)



82K  
MADE IN EUROPE

- Libra Smart Euro Cylinder**
- Made in Italy
  - Stand alone electronic euro cylinder
  - Fits European profile cylinder locks
  - No wiring required
  - 3 year manufacturer's warranty
  - Battery life 2 years
  - Passage function friendly
  - Able to communicate with smart phone, RFID cards, electronic key tags
  - Range of communication between phone and cylinder 10 metres
  - Suitable for exterior doors IP66 rated
  - Stores up to 300 users
  - Cylinder body lengths available are 70, 80 and 90mm
  - Able to communicate with most iPhone and Samsung smart phones
  - Free app available (ISEO ARGO)
  - Available with black reader and Satin Nickel turn

3 POINT LOCKING

MADE IN EUROPE

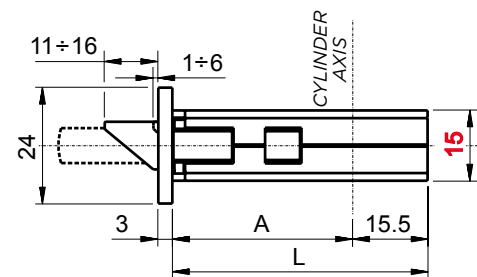


- Performa Lock - Wooden Doors 723**  
**Performa Lock - Aluminium Doors 7235**
- Face plate length 2300mm but can be cut to length
  - Minimum length 1700mm
  - Three strike plates included with the lock
  - Tested to over 200,000 opening/closing cycles under load
  - 85mm cylinder spacing
  - Deadbolts operated by cylinder
  - Easy locking - gearing within main lock provide easy operation
  - Low friction chamfered deadbolts help maintain weather seal compression for better thermal insulation and energy v saving
  - Can be operated by double turn kit rather than lever furniture
  - Flat faceplate versions suitable for timber doors (30, 40, 50 and 60mm backset)
  - U channel faceplate versions suitable for aluminium doors (30, 40, 50 and 60mm backset)



Images show "U" faceplate

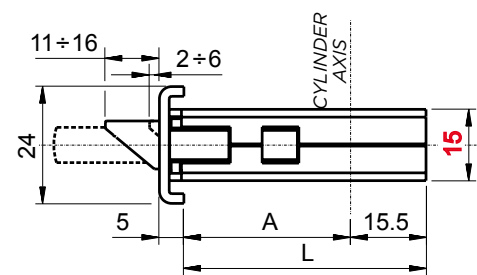
Performa Lock for Wooden Doors



Lock flat faceplate 24 X 3

Backset	A	L
30	27	42,5
40	37	52,5
50	47	62,5
60	57	73

Performa lock for Aluminium doors



Lock "U" faceplate 24 X 5

Backset	A	L
30	24	39,5
40	34	49,5
60	54	70

SECURITY HARDWARE

MADE IN EUROPE

741



Iseo Open Case Mortice Lock Suitable for Aluminium Frames

- Reversible latch
- Available in 20, 25, 30, 35mm backsets
- 85mm cylinder spacing
- Operated with optional euro profile cylinder
- Front plate 238 x 22 x 3mm
- Deadbolt has a 15mm throw
- Stainless Steel faceplate
- Includes strike plate

781



Iseo Swing Bolt Mortice Lock for Aluminium Doors

- Rotating/drop deadbolt with a 24mm throw
- Available in 25, 30, 35mm backsets
- Reversible and adjustable latch bolt 10 to 15mm
- 85mm euro cylinder spacing
- Front plate 290 x 24 x 3mm
- Stainless Steel faceplate
- Strike plate sold separately, item code 781Strike

7814



Iseo Parrot Beak Mortice Lock for Sliding Doors

- Available in 30, 35mm backsets
- Hook deadbolt has 8mm clearance with a 18mm throw
- Front plate 290 x 24 x 3mm
- Stainless Steel faceplate
- Strike plate sold separately, item code 7814Strike

78147



Iseo Parrot Beak Mortice Lock for Sliding Doors

- Available in 35mm backset
- Hook deadbolt has 14mm clearance with a 24mm throw
- Front plate 290 x 24 x 3mm
- Stainless Steel faceplate
- Strike plate sold separately, item code 7814Strike

749



Mortice Lock

- Available in 30mm backset
- Reversible latch
- 85mm cylinder spacing
- Front plate 238 x 22 x 3mm
- Stainless Steel faceplate
- For use on doors requiring passage mode
- Can be used for patio function and for use on doors requiring auto latching ie, pool areas
- Strike plate sold separately, item code 781Strike

7640



Roller Catch

- Adjustable protrusion of roller catch
- Heavily sprung
- Strike plate included
- Finish: NP

200N

NEW



Iseo closed case mortice lock suitable for aluminium and wooden frames

- Reversible latch
- Available in 40 mm backset
- 85mm cylinder spacing
- Operated with optional euro profile cylinder
- Front plate 238 x 22 x 2.7 mm
- Double throw deadbolt -20mm throw
- Includes striker plate
- Stainless steel finish

79111



Iseo Euro cylinder rotating deadbolt lock

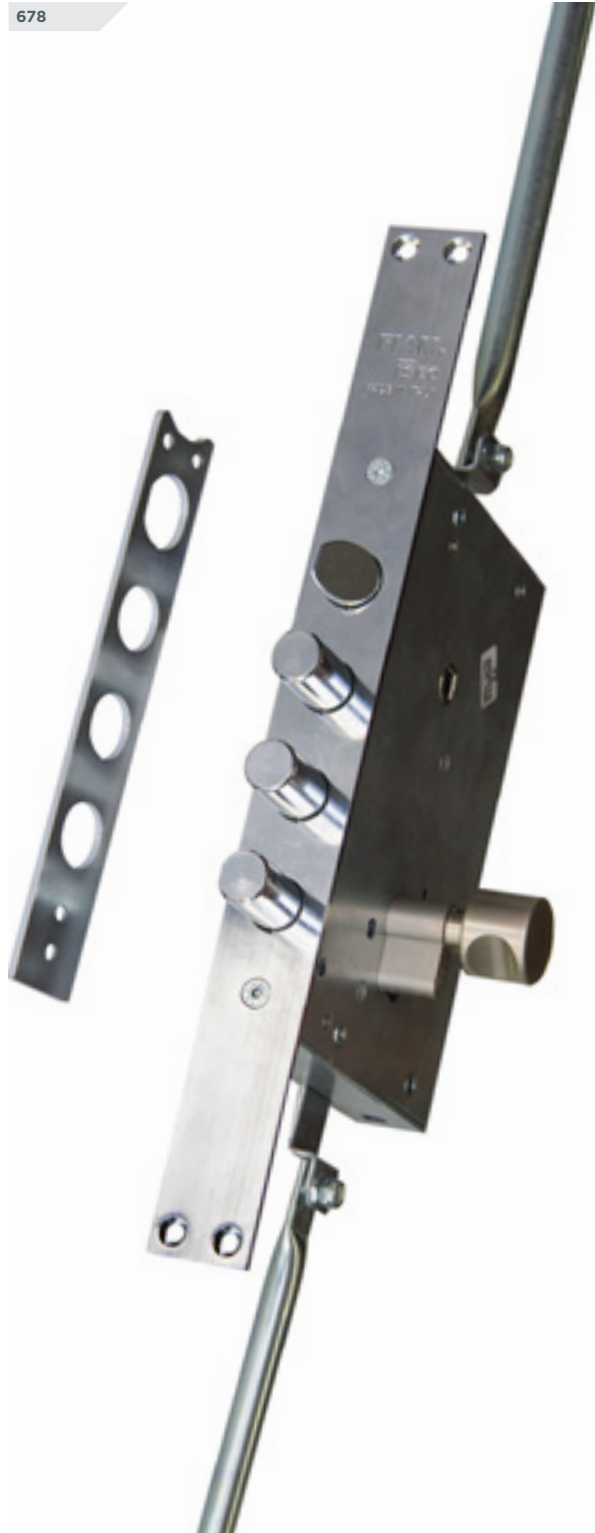
- Single through swing bolt
- Bolt throw 26mm
- 40mm backset
- 92mm handle cylinder separation
- Reversible latch bolt with key retraction of the latch
- Forend size 326 x 22mm



SECURITY HARDWARE

STRIKER PLATES

MADE IN EUROPE



678

- Armoured Lock**
- Cylinders not included
  - Latch reversible
  - 30mm bolt throw
  - Optional deadbolts available to make three point locking



723DSTRIKE

- Striker plate for the 723 Perfoma divator**
- Height: 132mm
  - Width: 24mm
  - Finish: SS
  - Iseo ref: 38220



7814STRIKE

- Striker Plate for 7814 Parrot Beak lock**
- Height: 132mm
  - Width: 22mm
  - Finish: SS
  - Iseo ref: 38021



723STRIKE

- Striker Plate for Perfoma lock**
- Height: 180mm
  - Width: 24mm
  - Finish: SS
  - Iseo ref: 38230



781STRIKE

- Striker plate for 781 Swing bolt**
- Height: 180mm
  - Width: 24mm
  - Finish: SS
  - Iseo ref: 38030



33092

- Strike plate for Perfoma roller kit**
- Height: 179mm
  - Width: 20mm
  - Finish: SCP
  - Iseo ref 33092



741STRIKE.SS

- Strike plate for 741 lock, -this item is included with the lock**
- Reversible
  - Finish: SS

GATE LOCK & MID RAIL LOCK

MADE IN EUROPE



52031 R  
52032 L

Image shows right hand

**Iseo Stainless Steel Electric Gate Lock**

- Suitable for exterior gates
- Backset 60mm
- Lock body produced in 304 grade Stainless Steel
- Optional Stainless Steel mounting plate also available
- Left and right options available not reversible
- Self locking latch bolt
- Inside red button can be deactivated by inside cylinder for use on an open gate
- Replacement solenoids available
- 12 volt AC, 15 watts



704

**Mid Rail Lock 704**

- 80mm backset to oval cylinder
- Suitable for aluminium doors with mid rail
- Operated by oval cylinder
- Deadbolt with 9mm throw with built-in latchbolt
- Alternative to knobset being fitted at 127mm

MID RAIL LOCK AND HANDLE SET

704HANDLE



**Mid Rail Lock and Handle Set**

- 304 grade stainless Lagos lever handle
- Iseo Mid Rail 80mm lock
- Mini oval 5 pin double cylinder - 54.6mm length
- Stainless steel back plate



CYLINDERS & ESCUTCHEONS

MADE IN EUROPE

8289



F5 5 pin Euro Cylinder and Turn

- 70.6mm cylinder length
- F5 key blanks available
- Finish: NP

8189



F6 6 pin Euro Cylinder and Turn

- 70.7mm cylinder length
- F6 key blanks available
- Finish: NP

8209



F5 Euro Double Cylinder

- 70.6mm cylinder length
- Key alike available
- F5 key blanks available
- Finish: NP

8199



F6 Euro Double Cylinder

- 70.7mm cylinder length
- Key alike available
- F6 key blanks available
- Finish: NP

8350



Mini 5 pin Oval Cylinder and turn

- 54.6mm cylinder length
- Suits ISEO 704 mid rail lock
- Key blanks available
- Finish: NP, PB

8300



Mini 5 Pin Oval Double Cylinder

- 54.6mm cylinder length
- Suits ISEO 704 mid rail lock
- Finish: NP, PB

4202



ISEO Escutcheon

- Euro escutcheon
- Finish: Anodised Aluminium

4203



ISEO Escutcheon

- Euro escutcheon
- Finish: SS

HYDRAULIC DOOR CLOSERS

MADE IN EUROPE

IS110



37410 Hydraulic Door Closer IS110, standard arm

- Hydraulic door closer, can be fitted to all types of doors, up to 100kg in weight and 1100mm in width
- Adjustment: closing speed, latching action or silent closing, back check
- RV force: EN 2-4
- Finish: Silver, Black

IS115



37515 Hydraulic Door Closer, slide track

- Hydraulic door closer, can be fitted to all types of doors, up to 100kg in weight and 1100mm in width
- Adjustment: closing speed, latching action or silent closing, back check
- RV force EN 2-4
- Finish: Silver, Black

IS310



37610 Hydraulic Door Closer IS310, standard arm

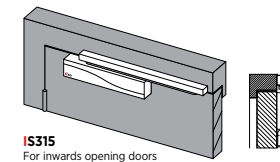
- Hydraulic door closer, can be fitted to all types of doors, up to 160kg in weight and 1400mm in width
- Adjustment: closing speed, latching action or silent closing, back check, delayed closing action
- Force: EN 3-6
- Finish: Silver, Black

IS315

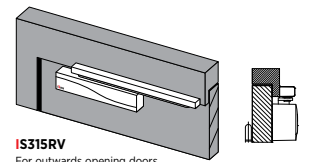


37715 - Hydraulic Door Closer, slide track

- Hydraulic door closer can be fitted to all types of doors, up to 120kg in weight and 1250mm in width
- Adjustment: closing speed, latching action or silent closing, back check, delayed closing action
- Force EN 3-5
- Finish: Silver, Black



IS315 For inwards opening doors



IS315RV For outwards opening doors





**GDRutter**  
Limited



**Head Office:**  
Box 100183, North Shore City,  
Auckland 0745,  
New Zealand

**Physical Address:**  
127 Diana Drive,  
Glenfield,  
Auckland 0627,  
New Zealand

**Ph:** +64 9 444 5359  
**FreeFax:** 0800 479 5826  
**Email:** sales@gdrutter.co.nz  
**FreePhone:** 0800 279 582  
**Australia:** 1300 764 015



[www.sylvan.co.nz](http://www.sylvan.co.nz)