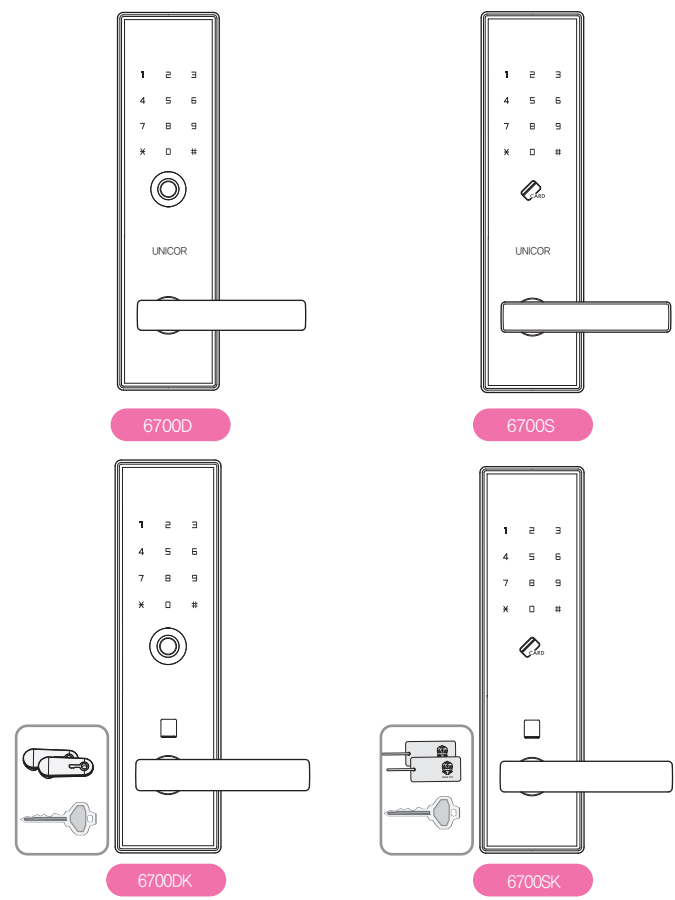


# 6700 Series User manual



UNICOR HIGHTECH CO., LTD  
www.unicor.co.kr



- This manual may change without notice in case of product improvement.
- Product specifications are subject to change without prior notice.
- This manual may not be edited or changed without the manufacturer's prior permission

## Caution

**As this is a keyless digital door lock, damage may occur to parts of the dead lock system if it is not used according to the manual. Users should be fully aware of the manual and how to operate this product.**

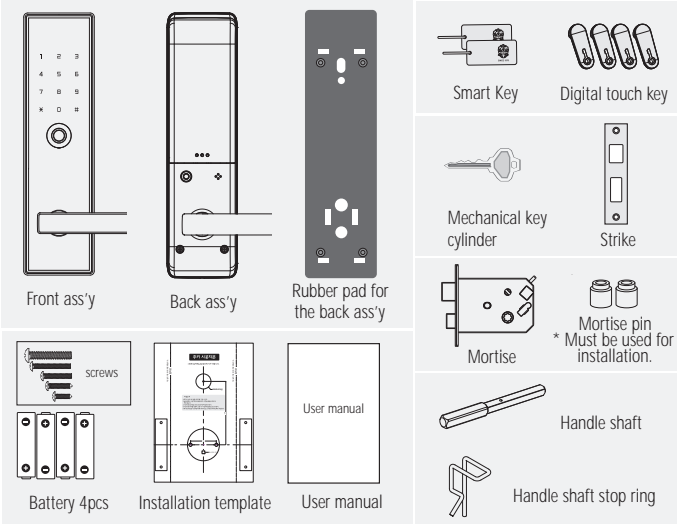
## Safety precautions



The precautionary measures are for the safety of the user, for the prevention of property damage, and for the avoidance of any inconveniences due to an accident. These must be read and followed properly.

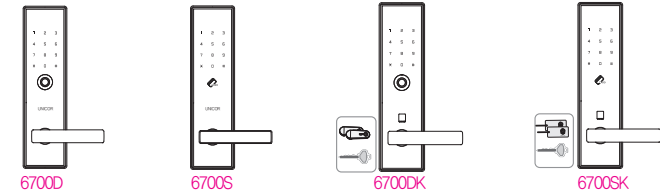
- Do not disassemble or alter the lock.
- Do not install where the distance over 5mm between the door and door frame.
- Please do not expose the password and change the password in regularly.
- Batteries should not be exposed directly to heat sources or flames, or submerged in water, because they may leak or explode, resulting in severe damage. Please do not use damaged batteries.
- Do not press using sharp tools or press numeric button excessively.
- Make sure the door is completely locked when going out.
- Place the batteries carefully and correctly according to their polarity (+/-). If the batteries are inserted in a wrong way, differently from the indicated direction or polarity, leakage or rupture could occur. Pay attention to it.
- Please do not mix old with new batteries or use different types. Always use new alkaline batteries.
- Do not clean the product with flammable materials such as alcohol, benzene or thinners. Such materials may damage the surface or cause a fire.
- Replace the current batteries with new ones within 1 week after the battery replacement notification melody sounded off for the first time.

## Components



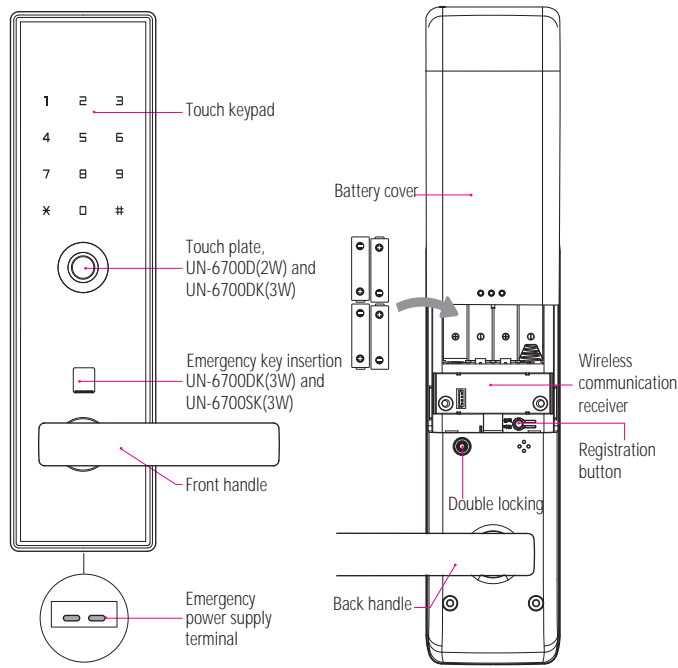
## Components of each model

| Model          | Door opening type                                      | Mechanical key | Option                                |
|----------------|--|----------------|---------------------------------------|
| UN-6700D (2W)  | 2way / Password & Digital key                          | X              |                                       |
| UN-6700S (2W)  | 2way / Password & Smart key                            | X              | Video phone interface, remote control |
| UN-6700DK (3W) | 3way / Password & Digital key& Mechanical key cylinder | O              |                                       |
| UN-6700SK (3W) | 3way / Password & Smart key& Mechanical key cylinder   | O              |                                       |



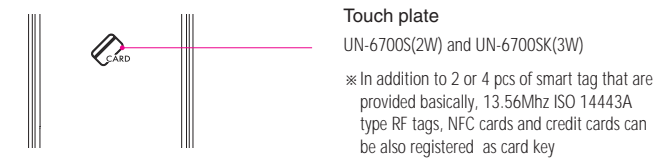
- The lifetime of the batteries is based on the result of the tests by the company and is not an absolute measurement. It will vary depending on the temperature and humidity of the installed locations as well as depending on the frequency of usage and the quality of batteries.
- The functions, design, and composition of the product may change without prior notification for the purpose of improving its quality.

## Front ass'y

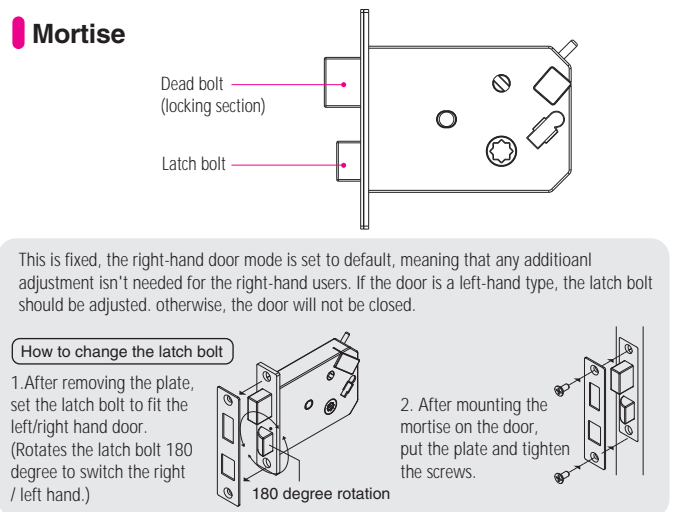


### Panic release function with handle

The handle is a one-touch type product developed by the company. When it is installed successfully, the user just needs to swing it down to open the door safely and conveniently when moving from the inside area to the outside area.



## Mortise



## Registering and changing the password

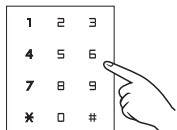


The door must be opened while registering the password.

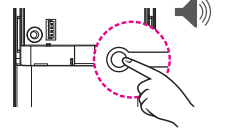
1. Open the battery cover of the back ass'y, and short press the [Reg.] button one time.
2. Check that the front keypad lamp is turned on.



3. Enter the password of 3-20 digits.



4. Press the [Reg.] button. Then, the registration will be completed while a sound is generated for checking the registration.



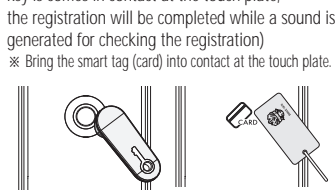
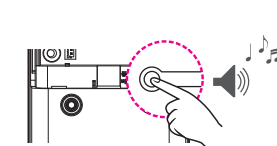
If no password is entered within 14 seconds after the [Reg.] button is pressed, the registration process will be cancelled. When a new password is registered (The above 1-4 steps), the previous one will be automatically deleted. If the registration mode is cancelled, the previous password will be maintained.

## Registering (again) the digital touch key / smart tag (card)

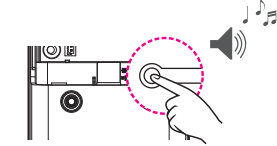


When it is needed to register digital touch keys, smart tags (cards) and remote control, or registering them again, it is required to register them all together at once. Remote control is optional. purchasing it separately.

1. Open the battery cover of the back ass'y, and short press the [Reg.] button one time.
2. Bring the digital touch keys into contact at the touch plate in order. (When each digital touch key is comes in contact at the touch plate, the registration will be completed while a sound is generated for checking the registration) ※ Bring the smart tag (card) into contact at the touch plate.



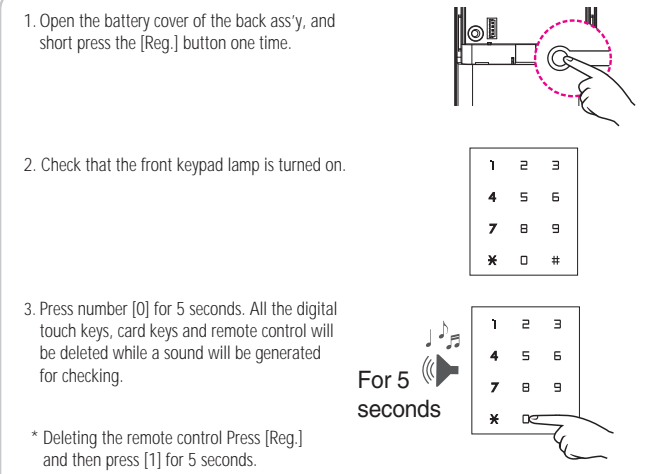
3. Press the [Reg.] button after registering all digital touch keys or smart tags (cards).



4. Registering the remote control (option): Short press the [Reg.] button of the back ass'y one time, and the press the [Open] button for registration.

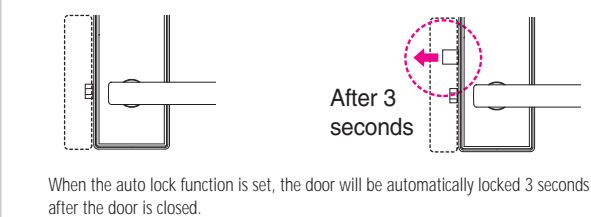


## Deleting the digital touch key, smart tag (card), and remote control

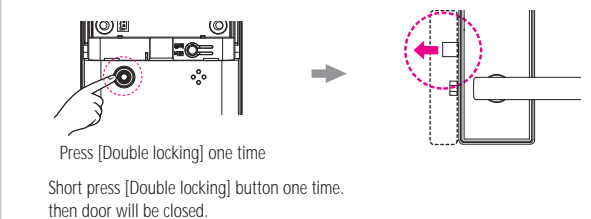


## Locking the door from the inside

### When the auto lock function is set.



### When the Manual lock function is set.

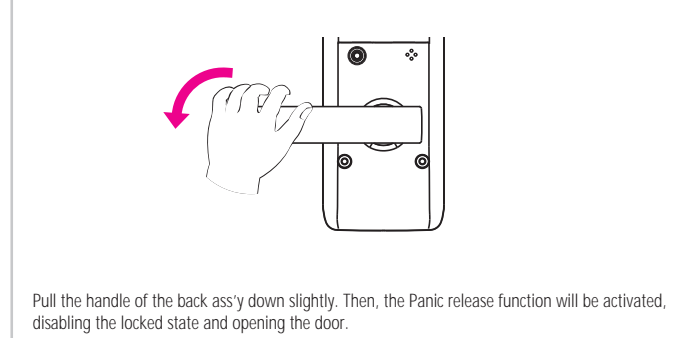


## Opening the door from the inside.



If the user does not open the door within 7 seconds after pulling the handle down, the door will be automatically locked.

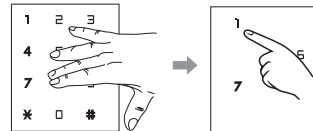
### Pulling the back handle down



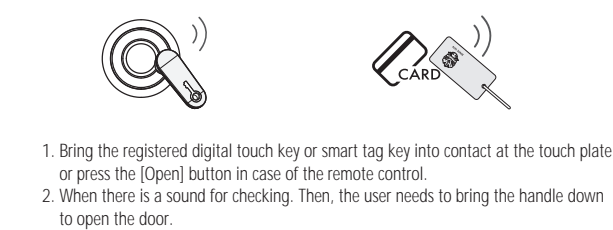
## Opening the door from the outside.

### Opening the door by using the password.

Touch the keypad. Enter the Password and [+] button needs to bring the handle down to open the door.

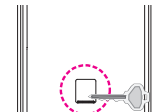


### Opening the door by using the digital touch key, smart tag (card) or the remote control.



### Opening the door by using the mechanical key cylinder.

Insert the key into the key hole and turn it to open the door.



Locking the door from the outside.

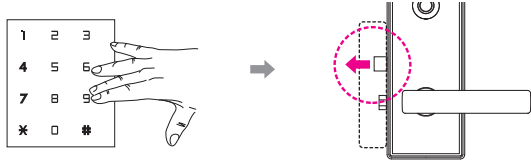
► When the auto lock function is set.



When the door is closed, it will be automatically locked 3 seconds later.

► When the manual lock function is set.

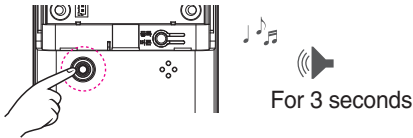
Touch the keypad. Then, the door will be locked.



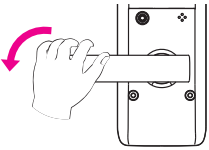
Internal double lock function

This Ability not be able to open the door by password, digital key and smart key or remote control from outside.

► Setting While the door is locked, press the [Double locking] button of the back ass'y for 3 seconds. Then, a sound for checking will be generated, completing the setting.



► Unsetting Bring the handle down from the inside and open the door.



To be released the internal double locking, press the [Double locking] button for 3 seconds.

Opening the door by using the handle.

It's not possible to open the door by password, digital key and smart key from outside while the double locking is set.

7

Releasing the double lock function from the outside

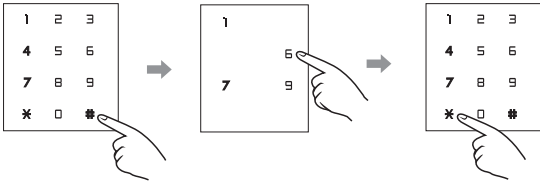
This makes it possible to unset the double lock function from the outside in case the double lock function of the door should be set accidently.

► Releasing

1. While the door is locked, touch the keypad and enter the registered password.



2. Press the [#] button and press the password and press the [\*] button again.

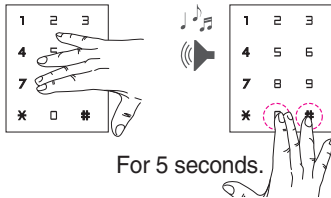


Forced lock function

This Function makes it possible for an emergency sound to be generated for the purpose of enhancing security when the door is handed from the inside when the user has to be absent from the premise for a period of time.

► Setting

1. Touch the keypad and press [0], and press [#] for 5 seconds.



► Releasing

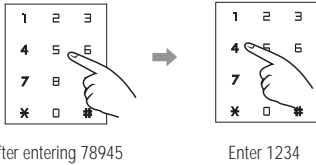
This function will be automatically disabled when the user opens the door and enters the premise normally by using the password, digital touch key or the smart tag (card).

Entering trick numbers to prevent exposure password

Even when another person is watching nearby, this fuction makes the user to enter an trick numbers before entering the real password.

► How to use the function

When the password is 1234 the user just needs to enter the real password 1234 at the end, after the trick numbers, 78945 is entered.



The total entering number of digits combining the trick munber and real password should be 3~20 digits.

8

Setting the auto / manual lock function

For locking the door automatically(or manually)

► Setting the auto lock function

Remove the battry cover, and press [Reg.] -[3]-[Reg.] button.



After opening the door, the magnet sensor is operating to recognize the auto locking status. If the door will not be opened within 7 seconds after releasing locking mode at the indoor/ outdoor, it will be locked again.

► Setting the manual lock function

Remove the battry cover, and press [Reg.] -[6]-[Reg.] button.



After opening the door, the magnet sensor is operating to recognize the manual locking status. To lock the door, please keep touch the keypad over 2 seconds.

Master Code / Master Key

The administrator only function to manage the collective complex. It can be deleted when moving-in.

► Master code

Registration (\* The door must be opened while registering)

[Reg.]-[8]-[3]-[Reg.] Enter the master code of 3~20 digits ]-[Reg.]

Delete

[Reg.]-[#]-[#]-[#]-[7]-[3]-[Registered Password or Master Code]-[Reg.]

► Master Key

Registration

[Reg.]-[8]-[6]-[Reg.]-[Key touch]-[Reg.]

Delete

[Reg.]-[#]-[#]-[#]-[7]-[6]-[Reg.]-[Registered Password or Master Code]-[Reg.]

Volume control function

This function helps the users to adjust the volum level.

► Nomal (initial value)

► Mute

► High tone

[Reg.]-[8]-[Reg.]

[Reg.]-[9]-[Reg.]

[Reg.]-[7]-[Reg.]

► Mute function



This removes the sound temporarily (one time) when it is needed to use the door lock quietly regardless of the currently set operating sound.

Touch the keypad, and press [#] button one time. Then, enter the registered password and [\*] button.

\* this is a temporary fuction, meaning that the operating sounds will be generated when the door lock is used again.



9

High-temperature warning system

Even when the digital door lock is locked, if the temperature sensor detects a high temperature(65℃±10℃), it will generate a powerful alarm and open the door automatically at the same time.



If the back ass'y is exposed to direct sunlight a long period of time, it could cause the temperature sensor to be cativated and a warning sound to be generated accordingly. The door's locked stated will be disabled even when the door is in the double-locked state from the inside.

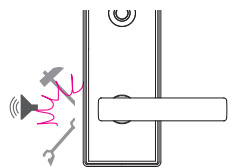
► Releasing the High-temperature warning system

Open the battery cover and remove the all batteries and wait for a certain time for the temperature to go down.



Releasing warning

Unauthorized entry / Damage alarm

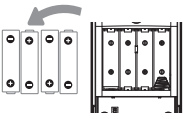


► How to disable the warning sound

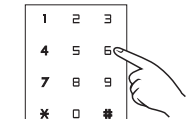
While the door is closed, if an abnormal opening of the door (For example: Someone breaks into the premise by opening up the gap in the door) is detected, a warning sound of 80dB will be generated.

The warning is disabled.

Enter the password normally or bring the digital touch key or smart tag (card) into contact normally. Then, the warning sound will be disabled.



The batteries are removed



The password is entered



The digital touch key or smart tag (card) is brought into contact

Mischief-prevention warning and stopping of operation

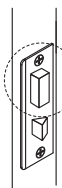
When an unregistered password is entered 3 consecutive times or an unregistered digital touch key or smart tag (card) comes in contact 3 consecutive times, a warning sound will be generated and the system operation will be stopped for 30 seconds.



Entered 3 consecutive times?



Warning the jam of the deadbolt



While the door is opened or closed, if the deadbolt does not come out or is not retrieved normally because of the jam of the deadbolt, and a warning sound "Bibibibi" will be generated.



"Bibibibi"



If the warning sound continues or the deadbolt does not work normally, it is required to adjust the position of the door lock, requiring the user to contact a shop that can handle the installation or an expert in the door locks

Battery replacement notification

When the batteries need to be replaced, a melody "Open the east, east, east gate~ Open the south, south, south gate" will sound off when operating the product. The melody lets the user know about the need for replacing batteries

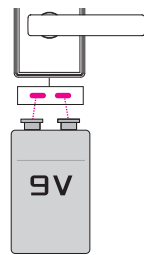
If the melody sounds off when operating the system, it is required to immediately open the battery cover of the back ass'y, and replace all the batteries (4pcs) with new genuine 1.5V LR6 AA alkaline batteries that can be purchased at nearby stationary stores or convenience stores.



- Must use general batteries, not rechargeable ones.
- Take precautions in placing the batteries in the compartment in order to prevent leakage or rupture that could occur when they are placed wrongly.
- Must replace the old batteries all with new ones, not partially. Do not use new ones with discharged ones together.
- It is designed to operate with the rated voltage 6V. If low voltage (4.2±0.3V) is detected, a melody will sound off.
- After the replacement, if the door lock stops working in a short period of time or the batteries are discharged, the batteries could be defective. It is required to contact the shop where the user purchased batteries and get new ones as replacement ones.

External Emergency Power Supply

When the batteries of the door lock are completely discharged, making it impossible to open the door from the outside by using the password digital touch key, or the card key, this function will help supply the emergency power by using a 9V battery from the outside.



- 1) Purchase a 9V battery in a rectangular shape from nearby stationary stores or convenience stores.
- 2) Bring the battery into contact at the 9V battery input terminal at the bottom of the front ass'y, and the press the [\*] button while maintaining the contact. If the power is supplied normally, a sound "Bibi~" will be generated and the keypad will be turned on.
- 3) Enter the password and then press the [\*] button, or bring the registered digital touch key or smart tag (card) into contact. Then, the door will be opened.



- It is OK to bring a 9V battery as an emergency power into contact regardless of the + and - polarities.
- When it comes to a key type model, it is possible to enter by using an emergency key even in this situation. That is why it is recommended to carry the emergency key usually or keep it in a safe place (in a car).
- The emergency power can be supplied when keeping the 9V battery into contact at the input terminal (not rechargeable).
- Replace all the discharged batteries right after supplying the emergency power.

11

Product standards

| Classification              | Specification   | Remarks  |
|-----------------------------|---|--|
| Front ass'y<br>(Front body) | 74W X 295H X25D mm  | Rated voltage: DC 6V<br>Working temperature:<br>-20℃ to 65℃<br>Sensor working temperature<br>(High temperature): 65℃ |
| Back ass'y<br>(Main body)   | 74W X 295H X30D mm  |  |
| Digital touch key           | 4pcs (2way touch model) / Possible to register up to 50pcs. |  |
| Smart tag (card)            | 2pcs (2way tag model) / Possible to register up to 50pcs.   |  |
| Emergency key               | 2pcs (2way key / 3way card models)                          | Will run for about 12 months when<br>used 10 times a day (6~8 months<br>in case of card models)                      |
| Battery                     | 1.5V AA LR6 alkaline battery x 4                            |  |
| Door Handling               | LH / RH / LHR / RHR   |  |

\* The lifetime of the batteries is based on the result of the tests by the company and is not an absolute measurement. It will vary depending on the temperature and humidity of the installed locations as well as depending on the frequency of usage and the quality of batteries.

\* The functions, design, and composition of the product may change without prior notification for the purpose of improving its quality.

| Types of consumer damage                 |   | Content of compensation    |   |
|--|---|----------------------------|---|
|  |   | Within the warranty period | After the warranty period                             |
| The product is used in normal conditions | Failure occurs within 1 month from date of purchase   | Product replacement        | Paid repair   |
|  | Failure occurs within 1 year from date of purchase    | Free-of-charge repair      |   |
|  | Same failure occurs 4 times or more                   | Free-of-charge repair      | Replacement after depreciation based on a fixed rate. |
|  | The repair parts are not available at the main office | Product replacement        |   |
| Mistakes and mishandling by the user     | Not the case of failure                               | Paid repair                |   |
|  | Mistakes and mishandling by the user                  |                            |   |
|  | Defective installation, and other reasons             |                            |   |

\* Details of mistakes and mishandling by the user

| Not the case of failure   | Mistakes and mishandling by the user   | Other reasons  |
|---|--|--|
| <ul style="list-style-type: none"><li>• When needed to break the product due to the loss of secret code.</li><li>• When the door is sagging, or installation is defective, requiring the product to be reinstalled.</li><li>• Request for checking the product for possible problems while there is no specific symptom of a failure.</li><li>• Problems in operation occur after the user installs the product directly.</li></ul> | <ul style="list-style-type: none"><li>• A visit for repair is needed as there are mistakes and mishandling by the user such as mistakes in replacing batteries and unskillful use of the product.</li><li>• Defective operation due to poorly inserted batteries and use of defective batteries.</li><li>• Failure and breaking due to the use of the product for other purposes.</li><li>• Failure and breaking caused by the user on purpose or from an external impact.</li></ul> | <ul style="list-style-type: none"><li>• Failure and damage due to natural disasters such as fires, floods, and damage from sea water.</li><li>• Penetration by water, condensation and injection of chemicals, requiring the internal circuits to be replaced, and causing failures.</li></ul> |

Warranty

◎ The warranty period for all of the company's products is 1 year from the date of purchase indicated on the warranty certificate.

◎ Even during the warranty coverage, users need to pay (the cost for trip, technical support and parts) for some services if they are in the category of chargeable services.

◎ User generally submit the warranty certificate or other methods that contains the installation information when needed to request a service.

◎ If the warranty certificate is not available, users need to submit a receipt, a credit card receipt or a cash receipt instead (Except for a simple receipt)

◎ If it is impossible to show the purchase date, the warranty period will be applied by taking into consideration the product's manufactured date + expiration period (6 months)

◎ For products purchased outside of Korea, please consult your local distributor or reseller as warranty policies vary from country to country.

UNICOR HIGHTECH CO., LTD

62 EunCheong Street, Namdong-Gu, Incheon, Korea (zip. 21643)

<http://www.unicor.co.kr>

12