

A modern interior scene featuring a dark wood cabinet with brass handles and knobs, a black and white lamp, and a beige armchair. The cabinet is the central focus, with its doors and drawers featuring simple, round brass handles and knobs. To the left, a tall, black, multi-tiered lamp with a glowing white globe sits on a light-colored stone or concrete surface. To the right, a beige, upholstered armchair with wooden legs is positioned in the corner. The background is a wall of dark wood paneling, and a bookshelf with books is visible on the far left. The overall aesthetic is clean, minimalist, and sophisticated.

BRASS CABINET
HANDLES + KNOBS

Windsor ARCHITECTURAL
HARDWARE

Introducing our bespoke range of solid brass cabinet handles and knobs. With multiple handle lengths and complementing Knob and T-Bar, this collection can be used in a variety of locations including kitchens, wardrobes, bathroom vanities and cupboards.

The three texture options and six finishes ensure there's the perfect solution to complement any design look for your home or project.

FEATURES

- > Constructed from solid brass.
- > Linear knurled, diamond knurled and plain handle texture options.
- > Available in four stocked finishes: Matt Black, Brushed Nickel, Graphite Nickel and Matt Satin Brass.
- > Available in two living finishes: Dark Roman Brass and Roman Brass.
- > Three handle length options: 160mm, 260mm and 360mm.
- > Optional round mounting discs included.
- > For retro-fitting cabinet handle backing plates can be ordered separately see below product codes.

BACKING PLATE CODES

6526..... 160mm

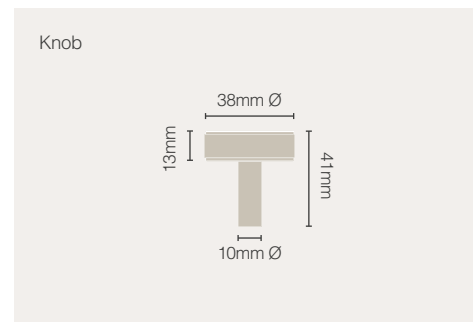
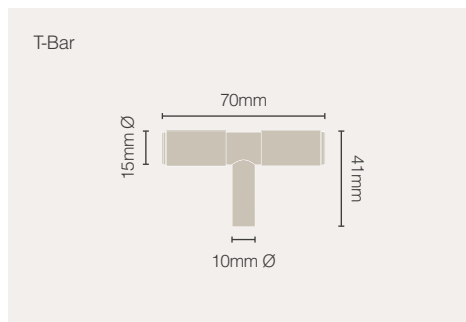
6527..... 260mm

6528..... 360mm

Mounting Options



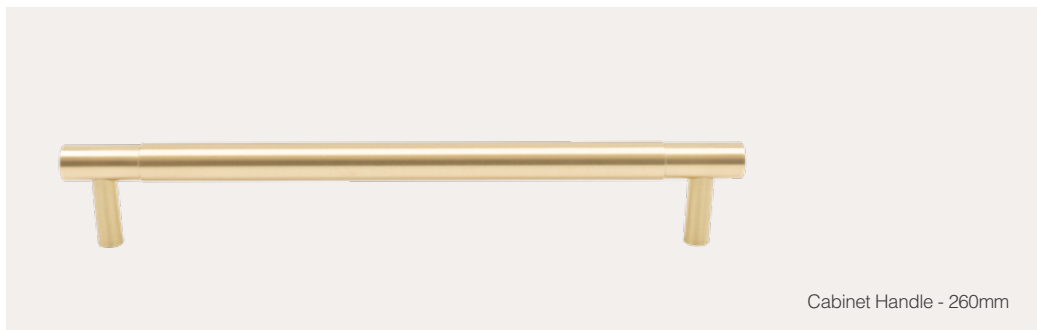
Product Dimensions



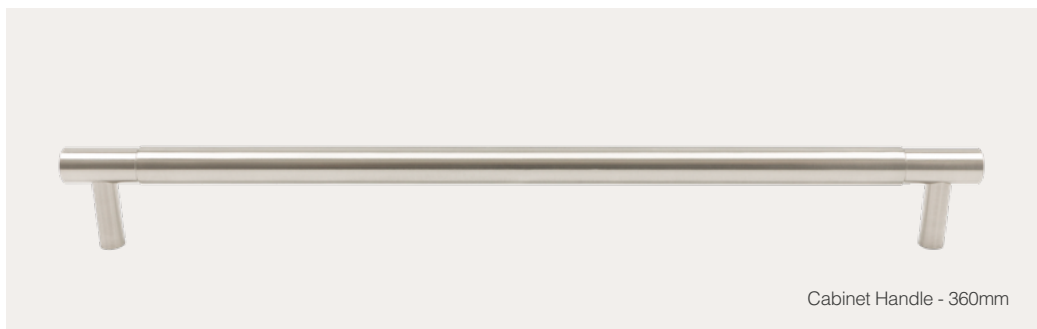
PLANAR



Cabinet Handle - 160mm



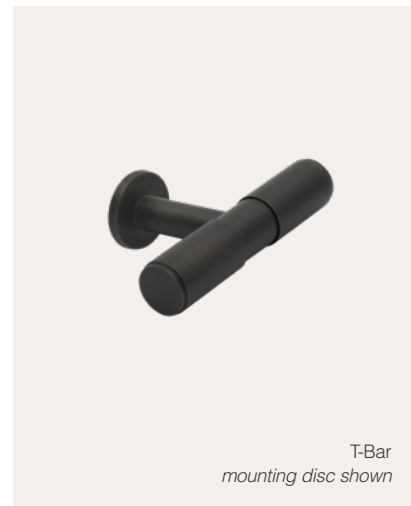
Cabinet Handle - 260mm



Cabinet Handle - 360mm



Knob
mounting disc shown



T-Bar
mounting disc shown

Cabinet Handles

code	knurl	mm o/a	mm crs	mm bar Ø	mm pj*
6502	plain	160	130	15	41
6503	plain	260	230	15	41
6504	plain	360	330	15	41

* projection will increase by 3mm if the mounting discs are used.

Finishes:



Knob

6523 Plain
38mm Ø
41mm pj*

T-Bar

6520 Plain
70mm o/a
41mm pj*
15mm Ø bar

VERTEX



Cabinet Handle - 160mm



Cabinet Handle - 260mm



Cabinet Handle - 360mm



Knob



T-Bar

Cabinet Handles

code	knurl	mm o/a	mm crs	mm bar Ø	mm pj*
6508	diamond	160	130	15	41
6509	diamond	260	230	15	41
6510	diamond	360	330	15	41

* projection will increase by 3mm if the mounting discs are used.

Knob

6524 Diamond Knurled
38mm Ø
41mm pj*

T-Bar

6521 Diamond Knurled
70mm o/a
41mm pj*
15mm Ø bar

Stocked Finishes

NZ 1-2 day delivery lead time | **AU** 7 day delivery lead time

Special Finishes

NZ 14 day production and delivery lead time | **AU** 21 day production and delivery lead time

ORIZON



Cabinet Handle - 160mm



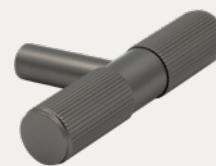
Cabinet Handle - 260mm



Cabinet Handle - 360mm



Knob



T-Bar

Cabinet Handles

code	knurl	mm o/a	mm crs	mm bar Ø	mm pj*
6514	linear	160	130	15	41
6515	linear	260	230	15	41
6516	linear	360	330	15	41

* projection will increase by 3mm if the mounting discs are used.

Knob

6525 Linear Knurled
38mm Ø
41mm pj*

T-Bar

6522 Linear Knurled
70mm o/a
41mm pj*
15mm Ø bar

NEW ZEALAND

NZ 0800 607 028

sales@windsorhardware.co.nz
windsorhardware.co.nz

AUSTRALIA

AU 1800 841 643

MEL 03 9116 7050

SYD 02 8011 1833

sales@windsorhardware.com.au
windsorhardware.com.au



Windsor
ARCHITECTURAL HARDWARE