

Libi™ Keyed Digital Lever - Instructions



Use QR code for additional installation information.



WARNING

Do not use an electric screwdriver during installation.

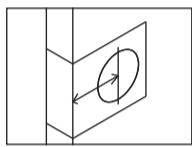
WARNING

This Manufacturer advises that no lock can provide complete security by itself. This lock may be defeated by forcible or technical means, or evaded by entry elsewhere on the property. No lock can substitute for caution, awareness of your environment, and common sense. Builder's hardware is available in multiple performance grades to suit the application. In order to enhance security and reduce risk, you should consult a qualified locksmith or other security professional.

Package contents						Tools needed (Not included)	
Exterior Assembly	Interior Assembly	Levers	Latch	Cylinder	Wood Screws Qty. 4 Length 19mm	Phillips Screwdriver	
			Strike Plate	Drive-in (Optional)	Mounting Screws Qty. 2 Length 47.5mm		
					Allen Wrench		
				2 Keys			

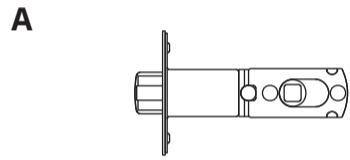
P/No. YLBI226-INSTALL-SHEET (2)

1. Latch adjustment

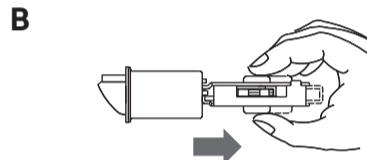


Latch Backset Adjustment

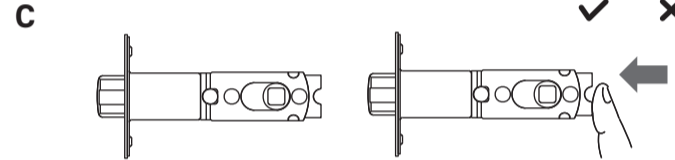
Backset is a distance from the door edge to the centre of the hole on door face. Some locks are supplied with adjustable latch which can fit 60 mm or 70 mm backset. Just follow the steps shown below to change backset.



a. This latch is set for 60 mm backset.



b. Keep spindle cam in correct position as illustrated. Pull spindle cam all the way to right.



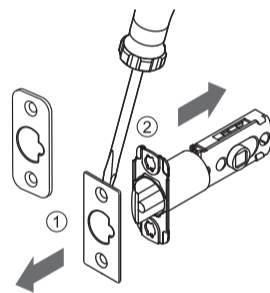
c. Your latch is now set for 70 mm backset. To reset 60 mm backset, just push spindle cam back to left side. Please make sure that the cams are staying with square shape.

Latch face plate

Prior to installation, please make sure that the face plate is appropriate for the latch.

Replace the face plate

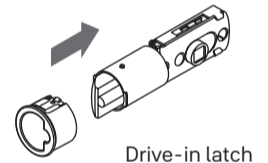
- Use the slotted screwdriver to pry open the face plate and the lock body.
- Install the appropriate face plate onto the latch body.



Installation of the Drive-In Latch

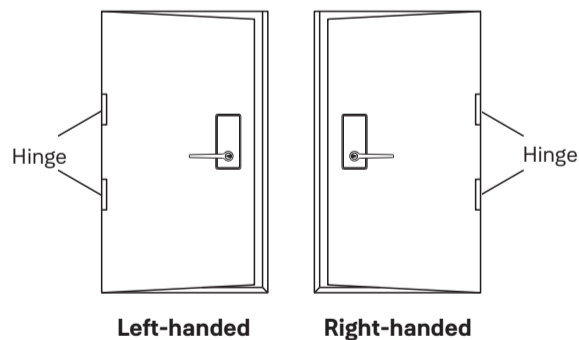
Align the round face plate to the head of the latch, and lock it into position.

Note. This is an optional fitting.



2. Identify door handing

Face the door from the outside. The door is left-handed if the hinges are on the left side of the door, whereas the door is right-handed if the hinges are on the right side of the door.

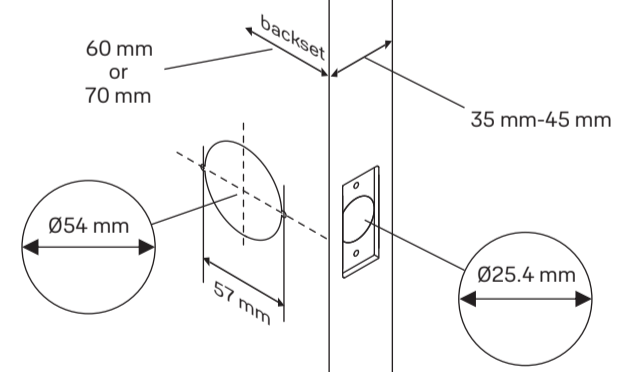


3. Prepare door and check dimensions

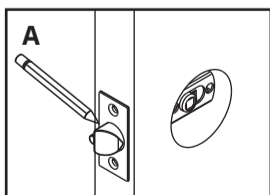
Use template enclosed to mark holes on door face. Drill Ø54 mm holes from both sides of door. Drill Ø25.4 mm holes in door edge for latches.

NOTE: For timber doors, we drill a perfect circle hole Ø54 mm as shown.

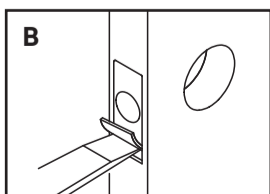
For metal doors, 2 - Ø4 mm holes need to be drilled as shown on template.



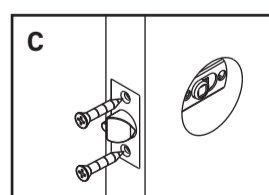
4. Install latch



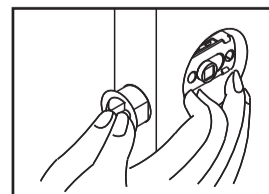
Insert latch in hole and keep it parallel to door face. Mark outline of face plate and remove latch.



Chisel 4 mm deep along outline to allow the faceplate to be aligned with the door edge.



Insert latch and tighten length 19 mm screws.



Install Drive-in Latch (optional fitting)

It is not necessary to chisel the door edge for the faceplate installation if you use the drive-in latch. You may install it into the edge bore directly, but be sure the bevel should face the outside assembly.

Note. This is an optional fitting.



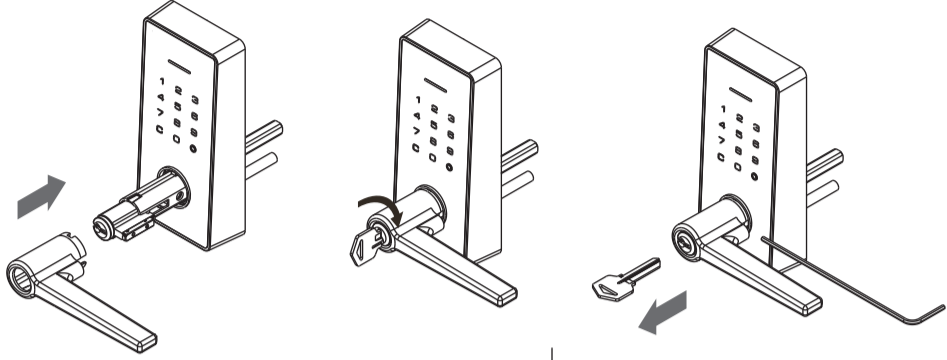
Libi™ Keyed Digital Lever - Instructions



5. Install exterior assembly

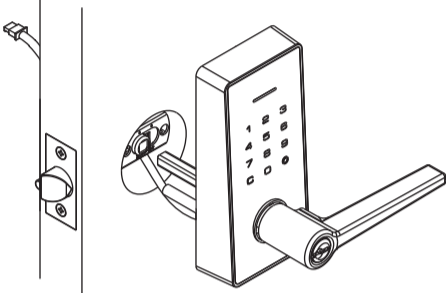
Install the cylinder and exterior lever. Insert key and turn 90° **clockwise** only, otherwise it cannot be taken out. Keep pushing the lever on, and confirm the status.

Tighten pre-installed set screw to secure exterior lever. Turn key back to horizontal position to remove it.



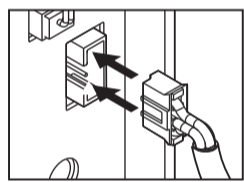
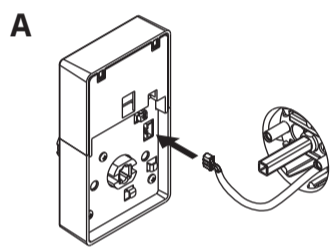
Place the exterior lock body onto the door panel from the outdoor side, and pass the cable through the door panel to the indoor side from under the latch.

Note: When installing, please avoid dropping the exterior lock body.



6. Install interior assembly

Connect cable.

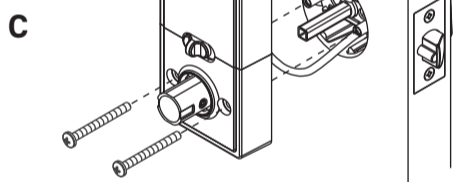
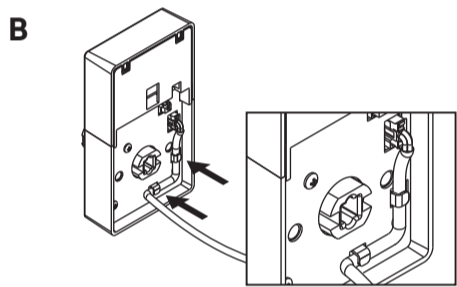


Ensure tight cable connection.

Secure interior assembly with mounting screws. Ensure both interior and exterior assemblies are parallel to edge of door before securing.

Note: Tighten 47.5 mm length screws evenly and do not overtighten.

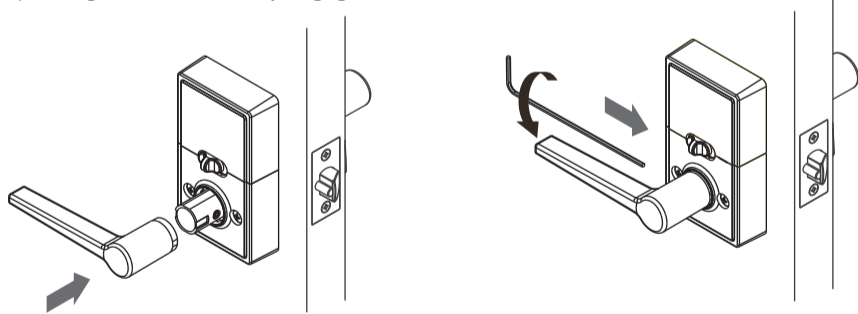
Route cable through clips.



7. Install interior lever

Lever handle faces away from the latch. TIP: You may need to jiggle the handle while pushing to ensure it is fully engaged.

Secure interior lever. Tighten preinstalled set screw.

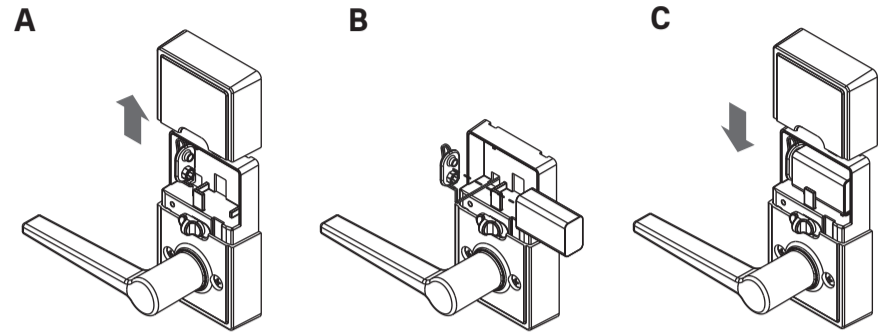


8. Install battery

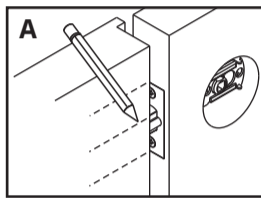
Remove interior cover.

Connect 9V battery.

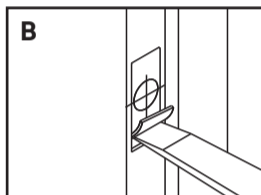
Secure battery into interior assembly and slide the battery cover back on.



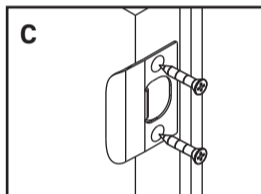
9. Install strike



To identify the centre of strike: Half-close the door so the latchbolt is against the door frame. Mark the position of faceplate as a guide. Place the strike against the door frame and mark its perimeter. Make sure the centre of strike is perfectly aligned with the centre of faceplate.



Drill a Ø25.4 mm hole with 13 mm depth on the centre of strike outline. Then use the chisel to gouge out the door frame 1.6 mm deep within the traced outline. Make sure to chisel deep enough to allow the strike to lay flush with the frame surface.



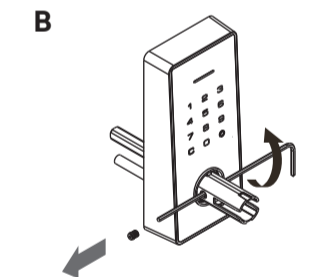
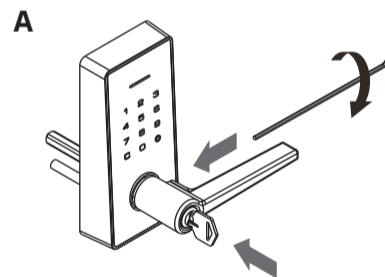
Install the strike plate into your door frame and tighten with 19 mm length wood screws.

10. Reversible levers

Exterior Lever Reversing

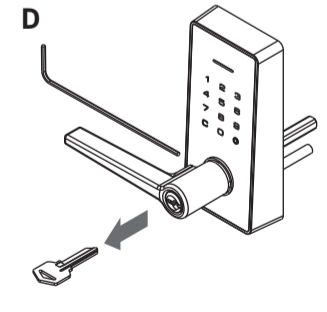
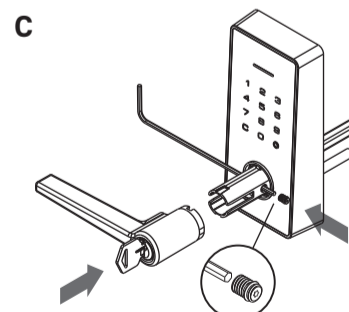
Insert key and turn 90° **clockwise**. Loosen pre-installed set screw to remove the lever and cylinder by pulling off.

Use allen wrench remove screw.



Pass the allen wrench through the drive tube (outside spindle) from the otherside and install the screw. Place the screw on the head of the allen wrench and install into the drive tube (outer spindle).

Tighten pre-installed set screw to secure exterior lever. Turn key back to horizontal position to remove it.



Interior Lever Reversing

Loosen the pre-installed set screw to remove the lever to reverse and put it in, then tighten the pre-installed retaining screw to secure the Interior lever.

